

ROCHESTER

N U R S I N G T O D A Y

A PUBLICATION OF THE UNIVERSITY OF ROCHESTER SCHOOL OF NURSING

FALL | WINTER 2002



MAKING A LONGER
LIFE WORTH LIVING
PAGE 4

REPORT ON GIVING
PAGE 26



A MESSAGE FROM THE DEAN



Autumn spurs reflection on the way things change and the ways in which we adapt to change. At the School of Nursing, our 75-year history is a model for adapting.

Nursing education, in its early years at the University, reflected the evolution of nursing practice. Today, our educational programs are designed to mirror the needs of the rapidly changing health care system. Our innovative educational programs are addressing the nursing shortage and meeting the needs of health care systems across the country. Tangible results are seen in our range of degree and certificate programs.

Initiatives like our accelerated programs and our MS and PhD Dual Degree are examples. Our accelerated bachelor's program enables eligible college graduates to build on their past education and experience in a course of study that qualifies them for RN licensure in one year. The accelerated master's program, which can be completed in three years, allows nurses a fast track for broadening their skills and enhancing career mobility. Our first class, 23 full-time and 10 part-time students, shows great potential to advance nursing practice with their fresh perspective and renewed desire for a career in which they can make a difference in the world.

This fall we welcomed our first full class to the School's innovative Dual Degree Program. This program attracts nurses who seek teaching and research opportunities early in their careers. Qualified nurses can earn their master's and doctoral degrees in less than five years of full-time study in our unique program. When students complete the advanced practice master's degree, they are eligible to sit for the national nurse practitioner certification exam.

Our ability to develop these and other innovative programs to meet the needs of today's nurses – and to attract the best and brightest students to our programs – hinges on financial support. We were bolstered by a remarkable \$2.24 million grant from the Helene Fuld Health Trust. This gift supports the expansion of our programs fostering fundamental changes in the way nurses are educated, the way nursing care is delivered, and the way in which nursing as a profession is perceived and valued. You'll read more about this generous gift and its impact on our programs in this issue. A previous gift from the Helene Fuld Health Trust is supporting economically disadvantaged students in our RN to BS and our RN to BSN to MSN programs, enabling deserving RNs to more readily pursue their educational goals.

Nursing research continues to thrive at the School and nursing faculty at Rochester are leaders in the area of nursing evidence-based practice. Funding from NIH and other foundations continues to grow in support of the innovative programs to which our researchers are dedicated. Our feature story in this issue of *Rochester Nursing Today* will fill you in on some examples of this work.

Quality in the “Autumn” of Life

The majesty of autumn – especially as we know it in the northeast – is often equated with the “golden years” of life, a time when our bodies, minds and souls ideally evolve to a season of fulfillment and satisfaction. Medical advances make it possible for many to enjoy long, active retirement years. Yet, the advances that make it possible to extend the

length of our lives do not always address the quality of life in those years.

The School of Nursing is committed to helping seniors make a long life worth living through our Center for Clinical Research on Aging. Faculty at the Center are on the leading edge of issues focused on quality of life for the aging. Results of groundbreaking research from the Center are already impacting the lives of people around the world who suffer from illnesses associated with aging. In the pages ahead, you'll learn more about the Center and read highlights of studies with the potential to profoundly impact aging, palliative and end-of-life care, care in nursing homes and intensive-care units, and quality of life.

Autumn is also special because of our Reunion Weekend, an annual event that unites generations of graduates and provides an enjoyable opportunity to visit with friends, share news, and stay connected. Nearly 175 alumni returned to Rochester from around the country in a celebration that recognized all the School was to us, and the bright future ahead.

We hope you'll feel the excitement of all that's happening at the School as you look through the following pages and, as always, we invite you to keep in touch with us. We are deeply grateful for your enthusiasm and support, through all of our “seasons.”

Sincerely,



PATRICIA CHIVERTON, EdD, RN, FNAP

Making a Longer Life Worth Living

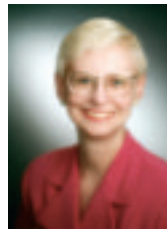
Center's Research is Focused on Improving
the Quality of Life for the Elderly





**IT IS ONE THING TO LIVE LONG,
YET ANOTHER TO LIVE LONG WITH DIGNITY
AND QUALITY OF LIFE.**

This challenge is the essence of the work around which The Center for Clinical Research on Aging is focused. The Center draws upon the rich resources of the University and the Rochester community to define and implement interdisciplinary research aimed at improving the quality of life of the elderly as well as their families and caregivers.



**Nancy M. Watson,
PhD, RN**

“Through research we hope to improve our practice of patient care,” says Nancy M. Watson, PhD, RN, director of the School’s Center for Clinical Research on Aging (CCRA). “This center is crucial to advancing knowledge in geriatric nursing.” CCRA, along with the Center for High-Risk

Children and Youth and the Center for Clinical Trials, are integral components of the Center for Research and Evidence-Based Practice within the School of Nursing.

Established in 1999, the Center builds on years of research in the School to improve the well being of older persons. Dating back to the early 1970s, School of Nursing researchers were among the first to demonstrate the value of interdisciplinary care planning for the chronically ill. Their work illustrated how all facets of care must be addressed to fully meet the needs of those with health problems, as well as those who care for and about them. A recent emphasis of research at the School has been on improving the care and quality of lives of persons living in nursing homes especially those with Alzheimer’s Disease and other dementias.

WIDESPREAD IMPACT AND RECOGNITION

The Center’s work has already had a positive influence on the overall health and well being of the elderly in Rochester and beyond. Widespread dissemination of research findings by the faculty has influenced health care practice and policy at the national level. (See highlights of key research from the Center on page 7.)



The School ranks among the nation's top four schools of nursing in geriatric nursing research, based on funding from the National Institute of Nursing Research (NINR) of the National Institutes of Health. The School's focus on geriatric research propelled it to the top of the list along with larger, state-funded schools.

The Center recently gained status as one of seven designated as a John A. Hartford Foundation Geriatric Investment Fund site. This grant provides funding to help build geriatric nursing education capacity. The program is designed to develop geriatric nursing leaders and advance geriatric nursing research and practice. Coordinated by the American Academy of Nursing, it is directed by renowned nursing leader and educator Claire M. Fagin, PhD, RN, FAAN. To qualify, the School required a solid foundation in geriatric nursing programs, curriculum innovations, university collaborations in geriatrics, and faculty leadership locally and nationally. "We are proud to be part of this important initiative, which draws on and enhances educational, practice and research leadership in geriatric nursing here at the University of Rochester," Watson says.

Earlier this year, The John A. Hartford Foundation also awarded \$2 million to 20 new nurse scholars to support

their studies and research in geriatric nursing. Among them is the Center's first post-doctoral fellow, Patricia Coleman, PhD, RN, APRN, BC, whose research is focused on oral care of nursing home residents. In separate achievements, The John A. Hartford Foundation (JAHF) Institute for Geriatric Nursing at New York University selected three School faculty members for its Summer Nursing Research Program. JAHF Institute Geriatric Nursing Research Scholars and Fellows are selected for in-depth mentoring with nationally recognized gerontologic nursing researchers. Goals are to foster successful programs of gerontologic nursing research with significant implications for practice. Selected from the School were: Diane Mick, PhD, RN, one of three JAHF Institute for Geriatric Nursing Research Fellows; and Hong Li, PhD, RN, and Sally Norton, PhD, RN, two of 12 JAHF Institute for Geriatric Nursing Research Scholars. In addition, at last spring's Eastern Nursing Research Society Annual Meeting in State College, PA, Norton received the JAHF Junior Faculty Researcher Award, recognizing outstanding contributions of a faculty member to geriatric nursing research who is within seven years of their post-doctoral work. Mick received the award in 2001.

ADVANCING EDUCATION AND IMPROVING PRACTICE

Further educational advances include the reopening of the School's top-ranked Geriatric Nurse Practitioner Program and the opening of a Post-Master's Geriatric Nurse Practitioner Program next fall for practicing nurse practitioners. Pre- and post-doctoral student education is being augmented by the development of two new research courses focused on critical practice and policy issues related to nursing home and dementia care. In addition, geriatric nursing content is being added to all educational programs.

Community liaisons are being established along with partnerships with providers to help make care more evidence-based and to conduct the research necessary to provide evidence for improvements in care. A community initiative has been launched to improve nursing home and dementia care both locally and ultimately at the national level and a website [<http://www.urmc.rochester.edu/SON/research/hartford.html>] has been created as a resource for caregivers as part of this work.

"Our future initiatives will continue to focus on improving the overall quality of health and life for the elderly and their caregivers," says Watson. "The Center provides pivotal linkages between faculty researchers, nurses, physicians, and other health care providers, and the community in charting a better life course for the aging population."

HIGHLIGHTS FROM THE CENTER FOR CLINICAL RESEARCH ON AGING

The Center for Clinical Research on Aging is involved in numerous studies aimed at improving the quality of life for the aging. Here is a sampling of the diverse, dynamic research under way at the Center.

ENHANCING QUALITY OF LIFE IN NURSING HOMES

Understanding and improving the experience of living with dementia is the focus of research led by Nancy M. Watson, PhD, RN, director of the School's Center for Clinical Research on Aging. Since the seventies, she has worked to improve the quality of nursing home care and in 1984 was the first to document the shift in nursing homes from primarily being rest homes to caring for persons with the significant behavioral symptoms associated with dementia.

Recognition of this clinical problem led to a new direction in nursing home research. Recently, her nationally acclaimed Rocking Chair Study, conducted with Thelma Wells, PhD, RN, FAAN, evaluated a method for improving the psychological well being of nursing home residents with severely progressed dementia. The study suggested that this mild exercise of rocking may release endorphins and improve mood as well as reduce pain. After determining that rocking in platform rocking chairs produced a soothing effect, instructional materials were produced and are used by a large number of care providers in a variety of settings across the country and around the world to improve the well being of persons with dementia.

In recent related work, Watson's study of catastrophic reactions among persons with dementia revealed that mid-stage dementia may be the phase of the disease that is most likely to produce acute episodes of agitation and emotional distress. This finding suggested to the researchers that these reactions may be due to the fact that people in this middle stage may still have some awareness of their cognitive losses, but are less able to compensate for them. Consequently, this results in a sense of sorrow, anger and frustration that may be manifested in the form of these severe emotionally agitated states. "Understanding this possible etiology could help persons working with this population predict who might experience such a reaction," Watson says.

"It also may help us better understand the reaction from the perspective of the person experiencing it, which may lead to new ideas about ways to prevent or resolve these reactions."

Another focus for Watson has been incontinence care in nursing homes. While studying the use of incontinence guidelines in 52 Rochester-area nursing homes, Watson's team, that includes Carol Brink, MPH, RN, GNP, assessed the rate at which people needed to be evaluated and determined that use of more consistent evaluation and treatment could significantly improve the quality of life of nursing home residents. "The implications for improving care and reducing costs related to urinary incontinence could be significant," according to Watson. "We are currently testing a model to improve incontinence care in nursing homes using nurse practitioners to help with workups and facilitate improved treatment aimed at changing policy for incontinence care in nursing homes across the country."

SUPPORTING LIFE AND WORK IN NURSING HOME CULTURES

For the past 22 years, Bethel Powers, PhD, RN associate professor and associate director of the CCRA, has conducted clinical research involving ethnographic (anthropological) analysis of nursing home culture. This research interest developed as a result of a blending of early nursing practice roles, that included care of older persons with terminal cancer, general medical and neurological problems, and rehabilitation needs, with a doctoral degree in anthropology. Published reports of her research on social support and social networks of elderly institutionalized people described considerable diversity in the support systems that residents develop. This study was the first of its kind to apply network analysis to a nursing home population. Powers identified four kinds of networks: institution-centered focused on people's ties to staff and other residents; small-cluster networks of tightly knit institution-based cliques; kin-centered networks that stressed people's relationships with relatives outside of the facility; and balanced support systems with a mix of ties to residents, staff, kin, and friends. Her most basic finding – the lack of a uniform pattern of adjustment among the elderly – supports findings of other researchers who have found highly individualized adaptations of older people to such diverse settings as apartment buildings, retirement communities, and skid-row neighborhoods.

More recently she has focused on issues involving care of nursing home residents with dementia through a variety of funded projects. "Nursing homes are challenging places in which to live and work," says Powers about her study of everyday ethical dilemmas affecting residents with dementia,

their families, and staff. This study produced a classification scheme (taxonomy) involving human rights and values related to learning the limits of intervention, tempering the culture of surveillance and restraint, defining community norms and values, and preserving individual integrity. “The point of publications related to this work,” she says, “is to illustrate the practical use of the taxonomy in framing and resolving many ethical dilemmas encountered daily in nursing home settings.” Similarly, the main purpose of her research on spiritual nurturance and support, conducted with Nancy Watson, PhD, RN, is to provide guidelines for facilities that may best ensure continuity of spiritual care. “In addition to programmatic approaches, many ordinary actions reflecting love, respect, and being there for residents can come to be understood as spiritual activities as well as responsibilities that are shared by the whole health team,” Powers says.

UNDERSTANDING HOW ICU CULTURES INFLUENCE DECISION-MAKING

With career roots in ICU nursing, Judith Baggs, PhD, RN, FAAN, associate dean of academic affairs at the School of Nursing, is intimately familiar with the complex decision-making involved in end-of-life care. Guided by a desire for the best quality and best outcomes for patients and families, she recognizes the importance of collaboration in decision-making, especially with respect to deciding if and when to withhold or withdraw treatment. Further, she understands that appreciating the culture of an intensive care unit is key to guiding the decision-making process.

Baggs is currently Principal Investigator of a National Institute of Nursing Research study, ICU Culture and Problematic Treatment Limitation Cases. “Our study relies on the anthropological technique known as ethnography to look at the cultures of intensive-care units,” says Baggs. “Those cultures are not all the same, even within one institution.”

Observing four separate adult ICUs at Strong Memorial Hospital, each over seven-month periods, Baggs’ five-member research team, including Co-Investigator Madeline Schmitt, PhD, RN, FAAN, is studying processes and communication to understand each culture and how decisions are made. Their findings will likely point out common threads that can facilitate improved decision-making beyond - but with respect for - individual cultures. “Communication is key,” Baggs says. “For example, we find that families of ICU patients often don’t understand who is involved in their loved one’s care as so many are involved. That presents a real chal-

lenge when they are looking to people with health-care expertise for advice that will help them make the right decision. There may also be discrepancies between what a provider says and how a family interprets those words, making the decision-making process highly complex and difficult.

“Our goal is to develop recommendations for ICUs to improve the process of decision making for both care providers and for families, to make people feel supported and listened to, and to know that their feelings are taken into account as decisions are made,” Baggs adds.

BREAKING COMMUNICATION BARRIERS IN PALLIATIVE AND END-OF-LIFE CARE

When the going gets tough, the language gets complicated, according to Sally Norton, PhD, RN, a Hartford Geriatric Nursing Research Scholar and assistant professor at the School of Nursing. Broaching the topic of death and end-of-life care is hard in itself, according to Norton. “The difficulty people have addressing the topic of death gets in the way of open communication where they can ask questions and voice their fears and concerns. Beyond that, we need to do a better job at helping people understand what the language means.” A good example, Norton notes, is the misunderstanding about palliative care, and helping people understand that deciding to provide palliative care is not the same thing as doing nothing or giving up. Helping families and providers understand each other goes a long way toward improving end-of-life care.

In her first nursing job in an ICU in Iowa, Norton was awakened to the complexities of the intensive-care culture, quickly learning that the ethics and decision-making involved surpassed what she’d felt prepared for fresh out of nursing school. Later, an RN stint in an Australian ICU added further dimension as she began to understand how decision-making was influenced by the values and ethics of a culture foreign to her. These experiences led her to study decision-making at the end-of-life from a provider’s perspective, and then to look at family members’ decision making in nursing-home hospice, where she found a correlation between involvement in decision-making and satisfaction with care. Her current work is focused on improving patient and family care as patients move toward the end of life, and to improve access to palliative care for patients and families who may benefit from those services.

“I developed a growing interest in palliative care in conjunction with curative care, working with a palliative care consult service,” says Norton. “When a family is faced with

making treatment decisions at the end of a loved one's life, the discussions are loaded with complexity, emotions, and cultural influences. It's a less-than-ideal situation in which they are forced to answer hard questions in a limited time frame." Norton is excited about the possibilities of working in an environment where the desire to improve palliative and end-of-life care is so strong.

Norton and Judith Baggs, PhD, RN, FAAN, associate dean of academic affairs at the School of Nursing, work together as members of the Rochester Health Commission's Community-Wide End-of-Life/Palliative Care Initiative. In addition, Norton is a member of Baggs' team of ICU researchers.

APPRECIATING THE FAMILY CARE-GIVER'S ROLE

The family bond cannot be underestimated in providing care to the elderly. In her studies at both the United States and China, Hong Li, PhD, RN, assistant professor of nursing, finds that family caregivers have a need to provide care to their loved ones when they are hospitalized and, when they do, patients are happier and more comfortable because of family involvement.

"We know that when family members are shown how to help care for their elderly loved ones in the hospital, they want to help and are more comfortable and more likely to do it, to the benefit of the patient and the family," Li says. "When family is there to help, outcomes are improved for elderly patients and their family caregivers. Everybody wins."

Li has spent the last several years developing ways to measure family involvement and its influence on the care of elderly patients in hospitals. One result was a teaching video that demonstrates to families some specific steps they can take to be involved in the care of their elderly loved ones. In her recently completed pilot study, where family members were shown how to participate in care, patients experienced fewer depression symptoms both during and after hospitalization. Both acute confusion and fecal incontinence rates were lower during hospitalization. "When family care-givers provided more care, patients were better prepared for discharge from the hospital and they had a lower incidence of depression.

"So far the results are encouraging; we're finding that families are happy and appreciative that someone is paying attention to the role they are taking in the patient's care. Nurses are really important but we cannot replace the family role," Li says. "They provide emotional care, comfort, and a voice familiar to the patient that cannot be duplicated. In doing so, family caregivers reported a closer relationship with their hospitalized elders and increased their caregiver role rewards."



Li also is planning to look at ways in which nurses can facilitate long-distance family care and participate more in the care of loved ones with dementia.

Li's work crosses international boundaries into her homeland of China where nursing research is relatively new. Having returned to China to help care for her ailing father-in-law, she saw opportunities to apply her ideas in a culture where family members are depended upon to provide much of the care to their hospitalized loved ones. Yet in China, nurses do not value the participation of family members and families don't necessarily know what to do or how to do it. "There is much room for intervention, and for teaching nurses how to value the family care-giver's role and how to teach them."

Her ideas are boundless as she sees ways to expand upon what she's discovered and how it can be applied across cultures. "My plan is eventually to have studies of three elderly populations: United States, Chinese in China, and American Chinese in the U.S.," Li says.

IMPROVING ORAL CARE IN NURSING HOMES

With a profound respect for the dignity and frailty of old age, Patricia Coleman, PhD, RN, APRN, BC, set out to improve pneumonia outcomes in elderly nursing-home residents. Along the way, she discovered a link between poor oral hygiene and the development of pneumonia that led her to question the poor quality of oral care in nursing homes and to seek ways to improve those conditions.

"Oral health is essential to overall health and quality of life for all ages, yet it declines significantly in medically, behaviorally, and physically compromised elderly," says the Post-Doctoral Research Fellow. Coleman, a John A. Hartford Foundation Geriatric Nurse Scholar, is launching a study of the delivery of oral care to elderly residents in nursing homes.



“Oral health and care is a neglected aspect in the nursing home, and my study will help to understand the barriers that may contribute to the delivery of this care, in an effort to improve practice and policy,” says Coleman. Her two-year study will use observations of and interviews with certified nursing assistants at several Rochester area nursing homes.

“Nursing home residents often have oral discomfort, poor oral hygiene, denture stomatitis, oral pathology and high levels of tooth decay. This study will lay the groundwork to understanding oral care practice so that evidence-based interventions can be developed to improve geriatric nursing care,” Coleman notes.

“The importance – yet under-appreciation – of independent nursing interventions like oral hygiene is key to improving health, comfort and quality of life for this very vulnerable population. This research will help us more fully understand the clinical and organizational conditions under which nurses and aides are expected to deliver care. Ultimately, it will result in creative clinical strategies and policies to deal with an increasingly elderly population who are retaining their natural teeth.

BALANCING THE OBJECTIVE AND SUBJECTIVE IN CARE DECISIONS FOR THE AGING

Outcomes for aged, critically ill patients, ethics of age-based rationing of health care, and the role of nursing in these issues is the focus of research led by Diane Mick, PhD, RN, CCNS, GNP, assistant professor in the CCRA and co-director of the Center for Clinical Trials and Medical Device Evaluation at the University of Rochester.

As the 2002 Hartford Institute/Merck Fellow in Gerontological Nursing, Mick’s allegiance to aging research stems from her master’s thesis work on the health beliefs and life satisfaction among retired teachers. This, plus a PhD and GNP certification, combined to enhance Mick’s understanding of the health care needs of the aged and assisted her in designing significant research proposals related to aging.

Her funded dissertation research on “Functional Outcomes of Elderly Patients Following Intensive Care” revealed a number of important areas for research. Key among them is the comparison of patients’ subjective perceptions with health care providers’ objective clinical assessment of health and function. “Grounded in ethics of age-based rationing of health care, the focus of this study was to determine the appropriateness of age as a factor in intensive care outcomes, and whether chronological age should be used as a criterion for limiting intensive care,” Mick says.

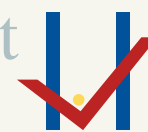
“Since the study was prospective, we were able to relate what the patients told us to our statistical findings, which explained the factors that contribute to their recovery,” she explains. While providers look at clinical measures to determine outcomes from critical illness, patients consider “getting back to normal” as their measure of recovery. “Patients considered their ability to return to tasks like bathing, dressing, climbing stairs, housework and grocery shopping as a measure of a return to acceptable level of daily living.”

Delving further into whether clinical measures of health change are accurate for determining post-hospital health status, Mick also completed a study titled “Response Shift in Aged Survivors of Cardiac Surgery.” This research, with Co-Investigator Michael Ackerman, RN, DNS-CS, FCCM, FNAP, focused on cardiovascular ICU patients over age 75, to determine if true behavioral change took place during the aftermath of their illness. “Testing this model may demonstrate that a clinician’s interpretation of a patient’s change in health status may not reveal sufficient information on which to base treatment decisions for the very old,” Mick reports. “These data may help to guide health care decision-making for the aged and may lead to more realistic and acceptable home and community-based health interventions for the aged.”

Mick is in the early phase of a project aimed at improving care of older patients by looking at health beliefs, self-care, coping, and transition, as well as the science of medical error and patient safety. This project, “Exploring Predictors of Cascade Iatrogenesis Among ICU Elders,” is funded by The Hartford Institute at NYU and Merck Pharmaceuticals. “I plan to synthesize knowledge from nursing and other disciplines to expand understanding of aged patients’ responses to acute and critical illness, their risk for decline due to hospitalization and how they adapt following hospitalization,” Mick says. “In this manner, risk factors during hospitalization may be identified, and appropriate interventions can be used both during hospitalization and when they return home.”



Health Checkpoint technology spurs wellness in the workplace



“This is a way business owners can help their employees stay healthy, by empowering them to take control of their health”

Community Nursing Center Director Donna Tortoretti, RNC, BSN, BA, CMAC, has collaborated with HomMed LLC, a medical device company, on the first workplace wellness plan that combines the use of wireless health monitoring and nurse wellness coaching to help employees take charge of their health. Health Checkpoint was initiated earlier this year and is now available in several locations in the Rochester area. The service will be introduced on a nationwide scale in a few months.



Above, nurse wellness coaches Marlene Downs, RN, BSN, CCM (left), and Eva Bellis, RN, BSN, CCM, serve as coordinators of the Health Checkpoint program.

At left, Bellis teaches a Health Checkpoint participant about the computerized system.

The program provides employees with a confidential setting in their workplace, where they can use the Health Checkpoint monitor by simply swiping a card and following the computer's directions. The FDA-approved device collects real-time, vital sign data automatically from a place of business, allowing a patient and medical personnel to keep track of heart rate, blood pressure, blood oxygen saturation, weight and temperature.

The CNC is the first in the nation to offer such a program, says Eva Bellis, RN, BSN, CCM, Corporate Health Management director and Health Checkpoint wellness coach. The service allows individuals to monitor aspects of their wellness in a private, quiet setting at their workplace. The convenience allows for consistent health monitoring that for employees can result in better health, and for the employers, a healthier workforce.

"This is a way business owners can help their employees stay healthy, by empowering them to take control of their health," Bellis says.

Community Nursing Center staff worked with HomMed to create a unique computerized program that fits the needs of a wellness service. Its technology had previously been used for home monitoring of individuals with health

concerns, such as heart failure patients. This is the first time it is being used to promote wellness. Currently Health Checkpoint stations are available in a volunteer fire department, a fitness center, a manufacturing company, the Human Resources offices at the University of Rochester Medical Center, and in the School of Nursing in Helen Wood Hall. Soon a senior living center will be added to the list.

When an employer seeks to provide Health Checkpoint, nurse wellness coaches Eva Bellis and Marlene Downs, RN, BSN, CCM, provide an informational session to employees. For those who enroll, a wellness coach meets one-on-one with them to identify existing health conditions. After assessing readiness and motivation for change, they assist the employee in setting personal health goals, whether it is weight loss, reducing stress, smoking cessation or managing a chronic illness. The wellness coach then provides educational materials in the form of informational packets relating to specific health concerns or web sites that address various issues. Regularly scheduled meetings with the wellness coach are set as often as the participant feels is necessary. Health data is confidential and not shared with employers.

Using the machine is simple, Downs says. A friendly, pre-recorded voice – available in more than 10 languages – guides the individual through the process, ensuring timely and accurate data collection in a few minutes. The monitor collects hospital-quality measurements of the user's heart rate, systolic, diastolic and mean blood pressure, blood oxygen saturation, weight and temperature. The data is transmitted immediately and securely to the Health Checkpoint office, where wellness coaches periodically check incoming data. If a participant's numbers fall outside the preset parameters – for instance, if blood pressure is deemed too high – the wellness coach will alert the user to ensure they are aware of a problem and seek medical treatment. Participants are aware of their individual health parameters, as discussed at the beginning of their program.

The data collected can be used to signal a change in health, but also can be trended to provide a picture of a participant's health history over weeks or months. This data can be shared with a participant's physician.

"Our goal is to help employees meet their personal health goals by offering access to monitoring, coaching and health information in their workplace, as well as support from nurse wellness coaches," Bellis says. "It's another example of how nursing has shifted its focus from disease management to promoting health."

spotlight on alumni



CATHY PETERS, MS, RN, NP

9/11 INSPIRES REFLECTION ON FACULTY MEMBER'S CAREER

Cathy Peters, MS, RN, NP, considers herself a student of human behavior. An assistant professor of clinical nursing at the School of Nursing, Peters applied her professional interests to a project centered on making sense of the “incomprehensible events” of September 11, 2001. For six months following the tragedy, she collected print headlines and arranged them into an artistic collage in an effort to commemorate and “piece together” the devastating events of 9/11.

An award winning collage artist and avid photographer, Peters is also adjunct faculty in the Division of Medical Humanities in the School of

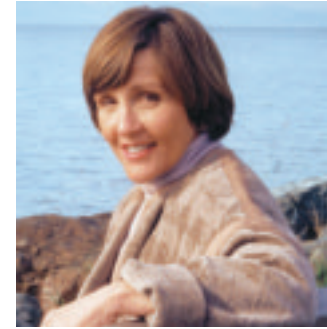


LISA COVE, MS, RN

HERE SHE COMES... MRS. NEW YORK AMERICA

As if her schedule isn't busy enough caring for her family, instructing yoga and participating in numerous volunteer projects, School of Nursing alumna Lisa Cove, MS '92, is taking on another responsibility: serving as Mrs. New York America 2002.

Cove became Mrs. New York America in July during a statewide pageant held in Rochester. The title carries with it speaking engagements at community and charitable events across the state. Organizers of the Sept. 11 events in New York invited her to be a part of the memorial activities but Cove was in Hawaii,



GLORIA HORSLEY, PHD, MFC, CNC

THERAPIST'S NURSING EXPERIENCE SEGUES INTO NEW WRITING CAREER

Gloria Horsley's newest career venture may seem a long way from her years as a clinical nurse therapist, but she says screenwriting – writing, in general – comes naturally to nurses, who each day record the stories of their patients.

“Nurses probably don't realize it,” Horsley says. “We deal with patients every day, writing down in detail so many aspects of their lives. I didn't appreciate for a long time how much writing I did as a nurse, that I wasn't only making notes about the health of individuals, but about what makes up their lives.”

Horsley, PhD, MFC, CNS, received her

CONTINUED ON PAGE 14

HIGHLIGHTING
SCHOOL OF NURSING
ALUMNI WHO ARE
FINDING SUCCESS
IN NURSING,
PERSONAL AND
VOLUNTEER
CHALLENGES, AND
CREATIVE PURSUITS

"I am grateful to so many friends and colleagues for their encouragement. Pat Chiverton, Dean of the School, is a wonderful mentor, and has supported my endeavors with enthusiasm."

CATHY PETERS

"I'm very active in volunteering in my community and the role of Mrs. New York America is a combination of public speaker and volunteer."

LISA COVE

CATHY PETERS CONTINUED

Medicine and Dentistry. She recently began work as a psychiatric nurse practitioner at Strong Memorial Hospital. Peters describes her collage as "an act of hope and healing." It is part of the Museum of the City of New York's "Virtual Union Square" exhibit.

Peters' first nursing position was at Lenox Hill Hospital in New York City. "I wanted to take some positive action after September 11, so I volunteered with the Red Cross. Returning to New York in this capacity was especially poignant for me because of my strong emotional ties to the City. It was a tradition for a group of friends to celebrate New Year's Eve at Windows of the World," she adds, remembering the famous restaurant that was located on the 107th floor of the World Trade Center. "Volunteering was a great privilege."

After five years in Manhattan, Peters moved to Rochester to continue her education. She completed both a master's in adult health, and post-master's in psychiatric nursing. "I am so fortunate to be part of the School of Nursing faculty," she notes. "I am grateful to so many friends and colleagues for their encouragement. Pat Chiverton, Dean of the School, is a wonderful mentor, and has supported my endeavors with enthusiasm." Chiverton and Peters co-authored an article that won the Rochester Academy of Medicine Award in May for the "best manuscript contributing to the knowledge of nursing and the progress of medicine." They are teaming up on other articles exploring how providers evaluate patients' values and preferences in health care decision-making. Their collaborators include Timothy Quill, MD, Robert McCann, MD, and Robert Bakos, MD.

In addition, since her volunteer work in New York, Peters has prepared an educational CD with a colleague, and contributed to a book on disaster relief, edited by Tener Veenema, MS, PNP, MPH. "It's a very busy, exciting time."

LISA COVE CONTINUED

competing in the Mrs. America Pageant, televised Oct. 12 on cable channel PAX.

The world of pageants is not unfamiliar to the 38-year-old. In her teens she participated in pageants in the Buffalo area, where she grew up. Cove then began a career in nursing and left the pageant world behind. A certified nurse practitioner in both adult and geriatric medicine, she has held adjunct titles as a clinical nursing instructor at the University of Rochester, as well as Cleveland's Frances Payne Bolton School of Nursing. She has published research articles ranging from cardiology to elder abuse to pediatric immunization practices.

Five years ago she made a choice to stay home with her three boys – a 5-year-old and 6-year-old twins. Cove has been married for 13 years to Christopher Cove, MD, an interventional cardiologist at Strong Memorial Hospital. With her youngest in kindergarten this year, it seemed like a good time to try a new direction.

"I'm very active in volunteering in my community and the role of Mrs. New York America is a combination of public speaker and volunteer," she says.

She chose a platform of volunteerism for the pageant because of a long-held belief that individuals should give of themselves in an effort to make a difference. She volunteers her time by teaching a five-week self-esteem course to first-graders and is an active member of the Junior League of Rochester. She believes it is important to teach children by example and, with her three sons, delivers meals for Rochester Meals on Wheels. She models in fund-raising fashion shows for a Buffalo women's charity organization, Women Interested in Cystic Health. The American Cancer Society and the American Heart Association also are part of her commitments.

Cove says her new title hasn't changed her life but has accented it. "I see this as a celebratory title of all my

“It’s a look at an ethical issue and how the strong-willed protagonist does the right thing as a matter of principle, regardless of what it might cost her.”

GLORIA HORSLEY

accomplishments,” she says. “It reinforces the fact that I’ve had a successful marriage, I’m raising three boys, really doing everything most married women do. With all our responsibilities, married women are not acknowledged enough and we have so much to share.”

Cove received her associate’s degree in nursing at Alfred State College in 1983, her bachelor’s degree in nursing from Alfred University in 1989, and her master’s degree in nursing at the University of Rochester in 1992.

GLORIA HORSLEY CONTINUED

bachelor’s degree in nursing in 1979 and her master’s in psychiatric nursing in 1981, both from the University of Rochester. She earned her master’s in child and family studies in 1989 from Syracuse University, and her doctorate in 1999 from Greenwich College, Hawaii.

While in Rochester, she served as a nursing instructor at the School of Nursing, as well as a primary therapist and psychiatric liaison nurse, then project coordinator of the Family and Marriage Clinic at the University of Rochester Medical Center, AIDS Health Project. She also was a family therapist at the Rochester Mental Health Center.

After moving to California in 1989, Horsley served as a therapist at the Mental Research Institute in Palo Alto and ran her own private practice. She published many journal articles and wrote several books, including “The In-Law Survival Manual,” which received attention from national media such as the “Today Show.”

Then, after dedicating two decades to her profession, she decided to begin on a new path as a screenwriter. Horsley is putting the finishing touches on a fictional work based on a true story that is expected to be considered by Lifetime Entertainment Television. It is about a strong, successful female psychiatric nurse who discovers that a colleague

is having an affair with a patient. She reports his conduct to their superiors but is then informed by both patient and colleague that if she proceeds with her accusations, both will claim they are untrue. The patient also promises to spread lies about her. The screenplay shows how the female psychotherapist battles against rumors and threats, finally winning in court with the help of numerous other women who admit they had inappropriate affairs with the psychotherapist.

“It’s a look at an ethical issue and how the strong-willed protagonist does the right thing as a matter of principle, regardless of what it might cost her,” Horsley says. Portions of the story stem from things she witnessed during her career as a therapist. Some of it – the fact that the protagonist gets her day in court – is fictional. But the message is clear. “This is about women facing adversity who find their inner strength and become empowered,” she says.

Although she is committed now to her writing career, Horsley still has a love for nursing. “Nursing is such a fabulous education,” Horsley says. “You learn to be people-oriented, you learn about physiology, and you realize there are so many different paths you can take. There are so many opportunities.”

The University of Rochester School of Nursing provided her the most valuable knowledge of nursing, a result of the unification model, she says.

“Combining practice, research and education makes you much more diversified,” she says. “I learned how to teach, as well as how to publish articles. It results in a well-rounded, capable individual.”

Horsley resides in San Francisco and Carmel, Calif., with her husband, Phil, a former vice president of investments at the University of Rochester. They have three daughters and eight grandchildren.

Attracting new talent to nursing: Partnering with the Helen Fuld Health Trust

Amid a tightening supply of registered nurses, the University of Rochester School of Nursing has received a major gift that promises to put its efforts to attract new talent to the profession into high gear. The \$2.24 million grant from the Helene Fuld Health Trust, HSBC Bank USA, Trustee is the single largest Foundation grant received by the School in the last 20 years.

“This funding will have a tremendous impact on our ability to infuse the region’s hospitals with newly trained, highly skilled nurses and retain the nurses already working in the profession,” said Patricia Chiverton, EdD, RN, dean and professor of the School of Nursing. “It will help us to foster fundamental changes in the way nurses are educated, the way nursing care is delivered, and in the way that the profession is perceived and valued.”

The grant is an endorsement of the School’s “Unification Model,” an approach that integrates clinical practice, education and research. The Unification approach has been proven to increase job satisfaction within a more skilled, professional workforce, and ultimately result in better patient care. Specifically, Helene Fuld Health Trust funds will be used to expand the School’s new accelerated degree programs and integrate evidence-based nursing into its educational curriculum.

GROWING MORE NURSES, SOONER

In May, the School of Nursing welcomed its first students in its new Accelerated Bachelor’s and Master’s programs. By giving students credit for past education and then building on it with graduate level research, systems and health policy courses, the accelerated programs enable non-nurses to enter the field in much less time than it would normally take. Accelerated programs also allow the School to draw educated, potential leaders to the profession by pulling from a diverse, untapped talent pool. The programs also prepare more nurses with advanced degrees – such as nurse practitioners – faster and thus, at a younger age than before.

“Our accelerated programs have been incredibly popular with prospective students,” Chiverton said. “For instance, we expected to start the accelerated bachelor’s

degree program with eight students, and we actually have 24. Now, using Helene Fuld Health Trust funding, we can offer more scholarships, hire more faculty and support staff, and purchase equipment needed to expand. We can also aggressively market the programs to qualified minority candidates. Within four years, we expect to significantly increase enrollment in each of these programs.”

IMPROVING NURSING’S IMAGE

The Helene Fuld Health Trust Fund support comes at a critical time for the nursing profession, as the nursing shortage is expected to intensify over the next decade as baby boomers continue to age and large numbers of nurses retire. In fact, the total population of registered nurses is experiencing its slowest rate of growth in more than 20 years. As fewer nurses enter the field, dissatisfaction is growing among experienced nurses. Studies show that one-third of hospital nurses under the age of 30 plan to leave their current jobs within the next year, causing industry experts to estimate that, by the year 2020, the nation will have one million fewer nurses than is needed.

“We cannot reverse this trend unless we change the practice and image issues that cause nurses to want to leave the profession,” Chiverton said. The Unification Model of nursing education teaches students to think critically about the care they deliver, and continuously improve that care by incorporating relevant, proven research findings.

“With these funds, we hope to change the training and expectations so that nursing is recognized as both a caring and a scholarly profession,” she said. Chiverton believes that by training nurses who see the profession in a new light, who both incorporate and initiate relevant research, the UR School of Nursing can produce nurse leaders who will transform the attitudes of those around them. This transformation will lead to nurses who are more satisfied, and thus, more likely to remain bedside nurses.

The Helene Fuld Health Trust is the nation’s largest private funder devoted exclusively to nursing students and nursing education. In 1935, Dr. Leonhard Felix Fuld and his sister, Florentine, created a foundation in honor of their

mother, Helene. In 1965, the foundation was converted to the Helene Fuld Health Trust, and in 1969 HSBC Bank USA (formerly Marine Midland Bank) became its corporate trustee. HSBC Bank USA is currently responsible for overseeing and administering the Fuld Trust.

Dual PNP|NPP, new MS|PhD programs net funding

The HRSA/Bureau of Health Professions has funded the School of Nursing's dual pediatric nurse practitioner/psychiatric mental health nurse practitioner program with a grant for \$720,000, and awarded three years of funding (\$687,000) to support the School's new MS/PhD combined and accelerated programs in primary care specialties.

NEED GROWING FOR ADVANCED PRACTICE NURSES WITH DUAL PREPARATION

The PNP/NPP grant will further accelerate the School's efforts to increase the number of advanced practice nurses who are dually prepared to meet the physical as well as mental health care needs of children and youth.

"We believe this is the first dual PNP/NPP program of its kind in the country," says Bernadette M. Melnyk, PhD, RN, CPNP, FAAN, associate dean for Research and director of the School's Center for Research and Evidence-Based Practice and PNP Program. "It has been exciting to see our vision and persistent efforts come to fruition."

Funds will support the program's efforts to implement an aggressive strategic plan to attract minority and rural/underserved students into the program; prepare APNs who are competent in providing evidence-based care in meeting the bio-psycho-social needs of children and youth and their families, develop additional on-line course offerings, and increase the knowledge and skills of clinical faculty and preceptors.

FIRST FULL CLASS ENROLLED IN MS/PHD PROGRAM

"We have just admitted our first full cohort of students for the

MS and PhD programs this fall," notes Madeline Schmitt, PhD, RN, coordinator of the School's PhD Program. "We are excited to be addressing a huge national need for doctorally-prepared nurse practitioner/researchers who can lead advanced practice programs and also build the evidence base for practice, especially in addressing the needs of underserved groups." Students may specialize in the areas of pediatrics, family care, and adult care (the three primary care areas addressed in the HRSA grant) as well as acute care, including pediatric neonatal care, and psychiatric/mental health care. The MS and PhD programs also are receiving funding from the Fuld Foundation (see story on opposite page).

This dual degree program is unusual in the nation in emphasizing nurse practitioner preparation simultaneously with the PhD research degree in an accelerated format and is designed to attract nurses earlier in their careers who wish to continue to practice while they teach and conduct clinical research.

Wanted: School of Nursing Mementos

The School of Nursing is working on preserving the heritage and traditions of its history. If you have any items of historical value that you would like to donate to the School for our archives and our new Eleanor Hall Heritage Center, please contact the Office of Alumni Relations at (800) 333-4428 or 273-5945 (local number).

Thank you for helping to sustain the traditions of the School of Nursing.

class notes

1940s

Eleanor Wallace Terry, BS '41, and her husband, Roger Terry, MD '44, are enjoying life in San Marino, Calif. In good health, they enjoy swimming, dancing and bicycling. Roger works three days a week in Surgical Pathology. Their son, a graduate of USC School of Medicine and an ENT specialist, and his family live nearby so Eleanor and Roger enjoy time with their two granddaughters. They also see a few old friends in California who were at the U of R.

1950s

Roberta B. Abrams, BS '59, received the 2002 Association of Women's Health, Obstetric and Neonatal Nurses Award of Excellence in Advocacy. The annual award pays tribute to nurse leaders who demonstrate exceptional leadership and vision, and who exemplifies AWHONN's core values. A maternal-child health nurse for over 40 years, Roberta was recognized for her outstanding efforts in advocacy in women's and newborn's health and in advancing the nursing profession.

1960s

Barbara Bates Smullen, BS '66, MS '69, EdD '83, has had a mid-life career change. After 30 years in Nursing and Nursing Education she earned a master's in Theology in 1998 from the Divinity School at St. Bernard's Graduate School of Theology. She is happily serving as Pastoral Minister at an inner-city church and enjoying her two sons. She experienced the great loss of her dear friend of 38 years, Jean Hoadley Peterson, BS '69, on September 11, 2001.

1970s

Elaine R. Graf, BS '73, as Magnet project coordinator for Children's Memorial Medical Center in Chicago, guided the hospital through the process of earning the distinguished Magnet Award for Nursing Excellence. Children's Memorial was the first hospital in Illinois to earn the prestigious award from the American Nursing Credentialing Center. Graf holds an MS and PhD from the University of Virginia.

Pamela Austin Thompson, MS '79, was the Clare Dennison lecturer at Reunion 2002. She was also given the Distinguished Alumni Award at the School of Nursing Luncheon during Fall and Reunion Weekend.

Dr. Kathleen M. Parrinello, BS '75, MS '83, has been elected as a new board member to the Visiting Nurse Service of Rochester and Monroe County. She is currently the Chief Operating Officer of Strong Memorial Hospital.

1980s

Judy Russell, MS '82, is a Corporate Wellness Educator with Bank One in Illinois.

Carol Cornwell, BS '83, MS '85, PhD '99, is Assistant Professor of Nursing at Georgia Southern University School of Nursing and Director of the Center for Nursing Scholarship. In 2002 she received the Academic Research Fellowship through AACN Leadership for academic Nursing Programs sponsored by the Helene Fuld Health Trust. She was also inducted in 2001-2002 into Phi Kappa Phi Honor Society of Georgia Southern University.

Judith Hanlon, BS '83, MS '90, is currently working as a Clinical Nurse Educator in the NICU Main Campus of Children's Hospital in Columbus, Ohio. She is also working in the NICU as a Neonatal Nurse Practitioner.

Yvonne Kimaid, MS '83, Vice President, Clinical Operations and Director of Patient Services of Visiting Nurse Service of Rochester & Monroe County, Inc., has been appointed to serve a one-year term on the National Association for Home Care (NAHC) Regulatory Affairs Subcommittee of the Government Affairs Committee.

Deborah T. Zimmermann, MS '86, has been promoted to the role of Senior Vice President and Rochester General Hospital's Chief Nursing Officer. She most recently served as Vice President of Hospital Operations.

Donna Mueller, MS '89, Pittsford, has been named director of health services at Monroe Community College. She holds a master's in mental health nursing and a bachelor's in nursing from D'Youville College. Mueller has worked in a variety of positions at the University of Rochester Medical Center since 1973.

1990s

Lisa Cove, MS '93, was crowned Mrs. New York at a statewide competition June 29, and went on to win the title of Mrs. New York America (see story, page 13).

Margaret Mary Ecklund, PMC '94, was appointed on July 1, 2002 to the American Association of Critical-Care Nurses Certification Corporation Board of Directors. She is currently an advanced practice nurse on a pulmonary step down unit at Rochester General Hospital. She is also a member and former president of the Greater Rochester/Finger Lakes Chapter of AACN. In addition, she has been representative to the National Kidney Foundation for the Creation of the Communication Document for Donor Recipient Families.

Amanda B. Weis, BS '98, and Nicholas A. Sloyer were married April 27, 2002, in Rochester. She is currently a primary service operating room registered nurse in orthopedics at Strong Memorial Hospital.

Cynthia R. Work, BS '99, is an RN on the Birth Center at Strong Memorial Hospital and received the 2001-2002 Excellence in Clinical Precepting Award on May 30, 2002.

2000s

Jennifer M. Dunivent, BS '00, and Jordan C. Miller were married July 14, 2001 in Rochester. Jennifer is currently a registered nurse in the Neonatal Intensive Care Unit in Strong Memorial Hospital and is enrolled in the new MS/PhD program at the School of Nursing.

OBITUARY

Margaret D. Sovie, RN, PhD

Margaret D. Sovie, RN, PhD, former director of nursing at the University of Rochester School of Nursing, died Friday, Aug. 19, 2002, of pulmonary fibrosis at her home. She was 69.

A resident of Media, Pa., Sovie served for nearly a decade as chief nursing officer at the University of Pennsylvania.

After graduating in 1964 from St. Lawrence State Hospital School of Nursing in upstate New York, Sovie worked as a nursing supervisor at Syracuse's Good Shepherd Hospital. She then served as education director for nursing services at Upstate Medical Center in Syracuse.

After serving as an assistant dean at Upstate, she was appointed director of nursing at the University of Rochester in 1976. She went on to the University of Pennsylvania in 1988 as chief nursing officer – a job she held until 1996. She also wrote many articles on nursing and management issues for national health care journals.

She often provided practical advice to nursing graduates, recommending they be flexible in looking for jobs and consider parts of the country where there were more opportunities. Build your resume, she would lecture, and then job offers will come.

From 1996 until the time of her death, she was a Jane Delano Professor of Nursing Administration at the University of Pennsylvania's School of Nursing. She also was a nurse practitioner at Penn's health annex at Myer Recreation Center.

She is survived by her husband of 48 years, Alfred; brothers William Doe, Maurice Doe and Timothy Doe; and sisters Patricia Frye and Mickey Snye.

in memoriam

Deceased Alumni From 2000 — Present

Name	Degrees
Mrs. Philip Grant Gariss II	BS-NURSING-1933 NUR, BS-ARTS/SCI-1933 UNC
Mrs. Helen Hawelka Ashe	B-ARTS/SCI-1936 NUR, B-NURSING-1937
Mrs. Ann Eisenberg Rosenberg	B-ARTS/SCI-1936 NUR, B-NURSING-1937
Mrs. Anne Johnston Skivington	B-ARTS/SCI-1939 NUR, B-NURSING-1940
Mrs. Ruth Miller Brody	BS-NURSING-1942 NUR, BS-ARTS/SCI-1940 UNC, MS-ARTS/SCI-1946 UNC
Mrs. Muriel Ehrich Hinline	B-ARTS/SCI-1945 NUR, B-NURSING-1946
Mrs. Joan Ernst Micsak	B-ARTS/SCI-1947 NUR, B-NURSING-1948
Mrs. Arlene Downey Coco	BS-NURSING-1952 NUR, BS-ARTS/SCI-1951 UNC
Mrs. Helen Fleckenstein Haws	B-ARTS/SCI-1959 NUR, B-NURSING-1960
Mrs. Elizabeth Hogben Pansewicz Delong	B-ARTS/SCI-1961 NUR, B-NURSING-1962
Mrs. Ivy Wickings Gaines	B-NURSING-1928 NUR
Mrs. Margaret Anderson Birchard	B-NURSING-1931 NUR
Mrs. Marion Bowerman Laughlin	B-NURSING-1932 NUR
Mrs. Frances Clark Withee	B-NURSING-1932 NUR
Mrs. Louise Taber Blei	B-NURSING-1933 NUR
Mrs. Atlanta Page Rumble	BS-NURSING-1933 NUR
Mrs. June Graffrath Heffer	B-NURSING-1938 NUR
Mrs. Louis Armagost Allen	B-NURSING-1939 NUR
Mrs. Evelyn Hansen Ferguson	B-NURSING-1941 NUR
Sr. Paul Marie Dougherty SSJ	B-NURSING-1944 NUR
Mrs. Rosemary Cammarata Mazzacane	B-NURSING-1945 NUR, B-ARTS/SCI-1955
Mrs. Shirley Donatelli Weber	B-NURSING-1945 NUR
Mrs. Jeanette Herrick Corley	B-NURSING-1946 NUR
Mrs. Mary Davies Smallwood	B-NURSING-1949 NUR
Mrs. Amy Garrison Hilder	B-NURSING-1950 NUR
Mrs. Mary Morgan Fisher	B-NURSING-1957 NUR
Mrs. Susan Shields Pettis	B-NURSING-1957 NUR
Mrs. Gail Davis Chancellor	B-NURSING-1961 NUR
Mrs. Jean Hoadley Peterson	B-NURSING-1969 NUR
Mrs. Janine Botash Gambino	B-NURSING-1979 NUR
Ms. Robin R. Higley	MS-NURSING-1987 NUR
Miss Wanda E. Pestke	MAS-NURSING-1963 NED
Mr. Albert D. Insley	MAS-NURSING-1964 NED
Mrs. Barbara Klock Lyons	MAS-NURSING-1964 NED
Mrs. Marie-Merrill Hubbard Ewing	MAS-NURSING-1972 NUR

PLEASE SEND OBITUARY NOTICES TO THE OFFICE OF ALUMNI RELATIONS.

OBITUARY

Ruth Miller Brody, BS '40, BS '42, MS '46

Ruth Miller Brody, third director of the University of Rochester School of Nursing and Nursing Service from 1951 to 1954 died June 10, 2002 after a long illness. She was 83. Brody received her baccalaureate degree from the College of Arts and Sciences in 1940 and went on to complete a baccalaureate degree in Nursing from the School of Nursing in 1942 and a master's of science degree in 1946 from the College.

Brody became an assistant instructor in the School of Nursing in 1942. She spent an interim year at Columbia Presbyterian Hospital before returning to Strong as a surgical nursing supervisor. Brody then progressed to medical supervisor in 1947 and to assistant director of the School of Nursing in 1949. In 1951, she succeeded Clare Dennison. She served as director until 1954.

In 1998 the Brody family established the Ruth Miller Brody and Bernard B. Brody Nursing Professorship.

She is survived by Bernard, her husband of 48 years, daughters, Sarah (David) Epstein and Rachel (David) Bandyck; two granddaughters and her sister, Esther Tuttle.



Letter from the Alumni Office



It was a weekend to remember as the School of Nursing community of alumni, friends, faculty and staff turned out to celebrate another Reunion and Fall Weekend in style.

The following pages depict the array of festivities held October 3-5, celebrating the pioneers who paved the way for nursing education in the 21st century. The weekend commenced with the dedication of the Jane Ladd Gilman, '42 Nursing Skills Lab honoring one of the early leaders in Rochester nursing and her dedication to the School over the years. Friends, family, alumni, faculty and students then gathered for a reception kicking off the celebratory weekend.

Touring Strong Memorial Hospital and the new Emergency Department, alumni were able to see first hand how the commitment to patient care still remains a hallmark of Rochester nursing. Pamela Austin Thompson, MS '79, addressed alumni, friends and faculty at the 44th annual Clare Dennison Memorial Lecture. A full house gathered with Dean Patricia Chiverton in Helen Wood Hall Lounge for the annual School of Nursing Luncheon celebrating the successes and highlights of the new programs and initiatives under way.

The weekend closed with a Celebration of Life for those alumni and friends who have passed on as well as a Colonial Belle Boat Tour along the Erie Canal and Class Dinners at the Hutchison House.

I sincerely want to thank everyone for their support in making this a wonderful weekend and salute the alumni and friends who were able to return to the School and connect with old friends. It was a pleasure to meet each of you and I look forward to seeing you again soon.

Please save the date for Fall and Reunion Weekend 2003, September 18-20, 2003! Watch the SON web site for the complete schedule in the coming months at www.urmc.rochester.edu/son.

I hope to see you then!

Sincerely,

ANDREA M. MARSHALL

ASSOCIATE DIRECTOR OF DEVELOPMENT AND ALUMNI RELATIONS



reunion 2002

1 | Dedicating the Jane Ladd Gilman '42 Nursing Skills Lab

2 | Community Nursing Center presentation

3 | Gathering at the Clare Dennison Lecture



4 | Class Dinners at Hutchison House

5 | School of Nursing Luncheon

6 | Community Nursing Center Presentation

7 | 50-Year Club Breakfast

8 | School of Nursing Kick-Off Reception





1 | Dean Patricia A. Chiverton, EdD, RN, and Christopher Raimy, Director of Development for Alumni Programs, dined with alumni during a recent trip to Reno, Nevada. From left: Dr. Edwin D. Savlov, MD '48, Alberta Schlatter Negley BS '71, Dean Chiverton, and Jean Tullius Savlov BS '55.

2 | 75 Years of Excellence in Nursing Education Event, May 17: Alumni, friends, faculty, students and their families gather to celebrate the University of Rochester School of Nursing's 75-year history educating leaders in nursing education, practice and research.



3 | Albany-area alumni gathered April 4 at the Marriott Albany. From left: Diana Winslow Maude '57, Lyn Lawrence LaBarre '77, Dean Patricia A. Chiverton, EdD, RN, Sally Mann '62, Jayne Zinke '64, and Andrea Marshall, Associate Director of Alumni Relations and Development.



3

4 | School of Nursing's new Dean's Advisory Board includes: (front row) Mary Moore Insel, Carolyn Taksen Friedlander, Dr. Junko Mohri Mills, Karen Webb Sutherland. (back row) Dr. Fay Wadsworth Whitney, Elizabeth Wetterings Smith, Marilyn S. Fiske, Dr. Elaine C. Hubbard, and Dr. Jean E. Johnson. Missing from photo is Dean Dr. Patricia A. Chiverton.



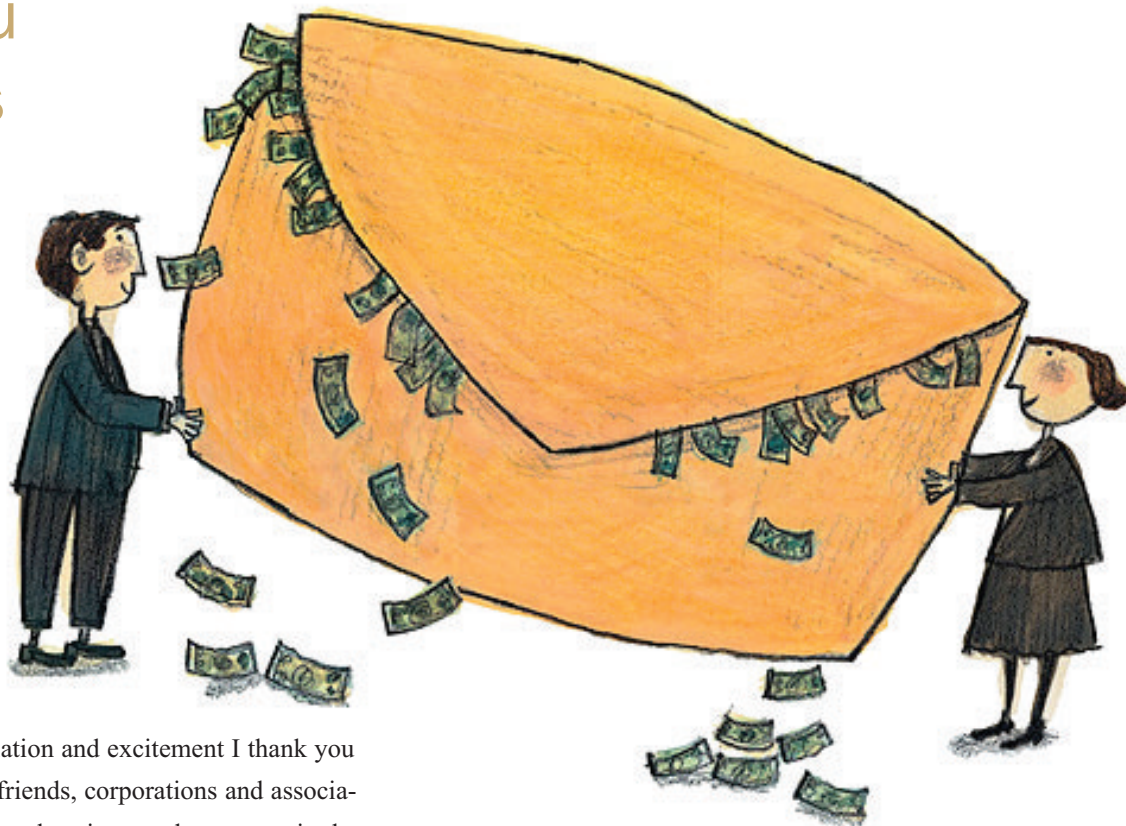
4

5 | School of Nursing Eleanor Hall Heritage Center Dedication, May 17. From left: Russell Craytor '35, Josephine Craytor, Eleanor Hall, Helen McNerney MAS '66, Jane Ladd Gilman B '41, B '42.



5

Thank You to Donors



Dear 2001-2002 Donors,

With great appreciation and excitement I thank you all! The following alumni, friends, corporations and associations enthusiastically supported projects and programs in the School of Nursing this year. Your generosity resulted in another record-breaking year. Overall alumni participation is 29 percent for the School of Nursing, the highest alumni participation among the schools within the Medical Center. Congratulations on a remarkable achievement!

I continue to meet the wonderful alumni and friends who are the foundation on which the School is built. For those of you I have not met, I look forward to meeting you in the future.

Thank you all for ensuring the future success of Rochester Nursing! I salute your commitment to nursing.

Sincerely,

Patricia Chiverton

PATRICIA CHIVERTON, EdD, RN, FNAP
DEAN

Gift Club Levels:

Dean's Diamond Circle	
\$50,000+	Benefactors
\$25,000+	Founders
\$10,000+	Advisors
\$5,000+	Patrons
\$2,500+	Fellows
\$1,000+	Associates
Helen Wood Society	
\$500+	
Grace L. Reid Society	
\$250+	
Clare Dennison Society	
Gifts under \$250	

School of Nursing Donor Report for

July 1, 2001 - June 30, 2002

We apologize in advance for any omissions or errors in the names of any participating contributors. This report lists gifts received as of June 30, 2002.

Listings	Page
• Friends	27
• Alumni	27-35
• Matching	35
• Corporations	35
• Foundations	35
• In Honor of	35
• In Memory of	35
• McLouth Challenge	36-40
• Eleanor Hall Bequest Society	40

Friends of the School of Nursing

Dean's Diamond Circle

Dean's Diamond Circle members are patrons whose gifts to the School of Nursing exceed \$1,000 annually.

Benefactors

Eleanor Hall, '61HNR
Jean E. Johnson

Founders

Nancy Ann Naughton Boyer
Loretta C. Ford, '00HNR &
William J. Ford

Advisors

Carolyn T. Friedlander & Roger
B. Friedlander
Elaine C. Hubbard

Patrons

William Bechtel
Josephine Kelly Craytor
& Russell E. Craytor

Fellows

Marjorie Stuber Cleveland
Lucretia W. McClure
Howard A. Spindler

Associates

Estelle H. Carver
Ruth Chapin Koomen
& Jacob Koomen Jr.
Anne Heberling Schottmiller
& John C. Schottmiller
George S. Terry Jr.

Helen Wood Society

Helen Wood Society members are patrons whose gifts to the School of Nursing exceed \$500 annually.

Janet E. Fitzpatrick
Richard F. Koestner
Margaret F. Lander
& Raymond A. Lander Jr.
Joan White Merzbach
& Ralph K. Merzbach
Joann C. Todd & Charles C. Todd

Grace L. Reid Society

Grace L. Reid Society members are patrons whose gifts to the School of Nursing exceed \$250 annually.

Reuben A. Clay Jr.
David A. Haller Jr.

Clare Dennison Society

Clare Dennison Society members are patrons whose gifts to the School of Nursing are less than \$250 annually.

Michael H. Ackerman
Kendra L. Adams
Alice Berggren Allen
Adrienne I. Antonucci
Brenda Babitz & Paul Babitz
Nancy Wales Bartlett
Dorothy J. Beavers
Gloria E. Becker
Mary Bigelow
& Raymond C. Bigelow
Lisa M. Bower & Donald P. Bower
Nancy H. Bradstreet
Sue Brent & Irving A. Brent
Gwendolyn Marie Buchanan
Martha S. Bulger
Sandra L. Bumpus
Donna Burkhardt
& Douglas Burkhardt
Beverly K. Bushart
Walter A. Campbell
Ann G. Candido
Lorraine E. Carroll
Alison Mason Chase
Kathleen L. Cholish
& Daniel W. Cholish
Solveig Leland Clapp
Mary Lou Clifford
& Jeremiah Clifford
Monica Wittmann Cloonan
Betsy E. Cohen
Anne Coyne
Eleanore M. Craig
Ann L. Cramer
& William M. Cramer
Robert A. Daly
Joyce DiMarzo
Vicki Dodds Schultz
Kreag Donovan
Dolores Pfrengle Fanton
& Kenneth R. Fanton
Judith R. Francis
& Jerry D. Francis
Mary Shoup Freliga
Frances T. Gay
Barbro Giangreco
Mary Jane Gissin
& Arnold S. Gissin
Monica S. Guenther
& Timothy B.
Guenther
Jeanne C. Hadfield
Marion Halpin
& Walter G. Halpin
Donald L. Henderson

Bernice C. Hogan
Louise A. Hohener
Doris B. Holt
Mercele B. Jackson
Florence Jacoby
Albina Janesko
Nancy Ann Kelley
Charlotte Klose & Gerhard Klose
Lindsey T. Knoble
& William F. Knoble
Gary Kuter
Henry C. Lane
Jeanne R. Loysen
Eileen W. Lumb
Sandra A. Lux
Blanche S. Mansing
Clara M. Marciano
F. Christine Marsden
Andrea Marshall
C. John Matteson
Donald E. McConville
Jean Feil McGillicuddy
Patricia M. McKenna & Cornelius
J. McKenna
Hilda Jo Anne Milham
Hugh D. Outtersen
Jann G. Packard
Mary Anne Palermo
& Richard C. Palermo
Diane Davies Parrinello
& John R. Parrinello
Eugene Parrs
Kathleen Pavelka
Anne Pell & Erik M. Pell
Madeline H. Petrillo
Sally Pezzulo
& Glenn Pezzulo
Judith Potter
Barbara Rockefeller & Larry
Rockefeller
Joyce Roeding
& Howard F. Roeding
Deborah Ronnen
& Sherman F. Levey
Irma L. Rumbutis
Martha G. Rumsey
& George N. Rumsey
Kathy England Scherer
Sarah S. Singal
& Daniel J. Singal
Marie Sorel-Miller
Nancy L. Spezio
Ada Mary Stankard
& Robert J. Stankard
Elizabeth A. Steinberg
Patricia A. Stewart
Jeanne P. Sumpter
& Edwin A. Sumpter
Marjorie Pritchett Tabechian

Christine A. Taylor
& David H. Taylor
Douglas F. Taylor
Inez Vervalin Todd
Donna M. Treat
Kathleen S. Van Voorhis
& Harold Van Voorhis
Shirley T. Warren
Heather M. Watson
& P. Keith Watson
Linda S. Weinstein
Delores Welkley
Dorothy McEwen Whittingham
Catherine Catlett Williams
Wendy A. Witterschein
Arlene Wickman Worden
Marge York
Gene L. Young

Alumni of the School of Nursing

1929

33% Participation

Clare Dennison Society

Elizabeth Waldorf Tague

1930

50% Participation

Clare Dennison Society

Lena Briggs Beck

1931

25% Participation

Clare Dennison Society

Mabel Sine Wadsworth

1932

40% Participation

Helen Wood Society

True Wilson

Clare Dennison Society

Ruth Adams Rowley

1933

14% Participation

Dean's Diamond Circle Associates

Mildred Grant Gariss *

1934

33% Participation

Clare Dennison Society

Wilda R. Gige
Madeline Ritter Pol

* denotes deceased

1935

27% Participation

Clare Dennison Society

Zoe Batsleer Bovet
Margaret Schaefer Dodge
Gertrude Frink Reed
Edna Sine Stockton

1936

33% Participation

Clare Dennison Society

Gladys Robin Alexander
Della Ziegler Olivey
Esther Webster Sweet

1937

44% Participation

Dean's Diamond Circle Associates

Elizabeth K. diSant' Agnese &
Paul A. diSant' Agnese

Fellows

Helen Hatch Heller

Clare Dennison Society

Naomi B. Baker
Ethel Corregan Doyle

1938

42% Participation

Dean's Diamond Circle Associates

Margaret McGlashan Ruch
Louise Sullivan Smith

Clare Dennison Society

Anne Petz Connelly
Elsie Otto Eccher
Annette Briggs Young

1939

42% Participation

Clare Dennison Society

Louis Armagost Allen *
Edna Bennett Arnold
Dorothy Storm Hintz
Eleanor M. Lofthouse
Maysie Calder Rich

1940

38% Participation

Dean's Diamond Circle Associates

Faith Barnum Norton

Clare Dennison Society

Esther Tuthill Bellwood
Marie Cabelka Christiansen
Margaret Stebbins Farris
Grace Size Shapiro

1941

36% Participation

Dean's Diamond Circle Associates

Anna Bater Young

Grace L. Reid Society

Doris Hubbard Crough

Clare Dennison Society

Virginia Berning Ervin
Sallie Shafer Jackson
Helen Norkelunas Malarkey

1942

41% Participation

Dean's Diamond Circle Advisors

Jane Ladd Gilman

Grace L. Reid Society

Lois Horton Chalecke
Ruth Stevens Mulligan

Clare Dennison Society

June Heinz Brockmyer
Jane Morgan Bruckel
Adelaide Briggs Carter
Marjorie R. Graham
M. Harriet Mills
Anne Gartland Payne

1943

29% Participation

Grace L. Reid Society

Betty M. Oatway

Clare Dennison Society

Julia Rodier Burdick
Frances Smith Dietrich
Jean Kelly Iversen
Marjorie Lee Jeroy
Elizabeth Stroh Marr
Eleanor Hill Marugo
Yvonne Odell McLravy
Ardis Borglum Vokes
Elizabeth Ickes Williams

1944

38% Participation

Dean's Diamond Circle Advisors

Marion Scutt Cole
& James M. Cole

Dean's Diamond Circle Associates

Betty Pixley Grant
& Richard Grant

Grace L. Reid Society

Ernest Haefele Longman

Clare Dennison Society

Thirza Jean Ecker
Gladys McBride Graham
H. Patricia Keefe
Arlene Miller Koerner
Margaret Fish Maslyn
Elsie Schockow Meyer
Jean Gunn Simmons
Mary Auman Steele
Norma McGivern Weigle

1945

51% Participation

Dean's Diamond Circle Advisors

Jane Curtiss Watkin

Grace L. Reid Society

Jean Spoor Stevens

Clare Dennison Society

Marie Zimmerman Costich
Jane Wilkins Diegert
Harriet Vales Donnelly
Mary Anne Fischer
Martha Mann Freeman
Mary Babcock Fyles
Anne Barnetson Gilbride
Anne Pryor Jayne
Rosemary Cammarata
Mazzacane *
Sally Murphy Miller
Marian Rahr Moir
Margaret Gilligan Phillips
Joyce Measor Rude
Alice Marie Sherman
Joycelyn Breen Thomas
Shirley Morrison Thompson
Pauline Lilley Totten
Marilyn Ingraham Wolff

1946

32% Participation

Dean's Diamond Circle Patrons

Alicia Parker Anderson
Barbara Greenlar DeRiemer &
Robert DeRiemer

Helen Wood Society

Ruth Weber Dickinson

Clare Dennison Society

Anita Woolshlager Curtiss
Marian Hulek Eiband
Caroline Blackwell Gale
Shirley Defrees Greenhalgh
Jane Fehr Hanlon
Doris Brill McNulty
Catherine McCormick Monroe
Katharine B. Morris
Doris Cooper Nelson
Gail Bowen Ness
Nada Blake Phillips
Dorothy Marg Revell
Joan Sage Shaw
Rita Sheridan Studley

1947

23% Participation

Clare Dennison Society

Dorothy Mosley Alexander
Elizabeth Mohney Bean
Jean Lissow Buehler
Helen Range Cone
Betty Dahlgren Glatz
Margaret Mullen Griffith
Eris Olds Kimble
Berenice McAusland Lambie
Angie Palmisano Laverdiere
Elizabeth Woodard Love
Lucile Beaman McGarrah
Elsie Hotchkin Moon
Nancy Wickson Smith
Elizabeth Thom Snedeker
Esther Hagberg Swales
Ann Esmond Towers
Flora Chindgren Vogt
Gloria Burgett Webster
Jeanette Merritt Weller

1948

39% Participation

Helen Wood Society

Carolyn Cartwright Tenney
Jean Cornell Upton
Carolyn E. Whitney

Clare Dennison Society

Martha Turner Adams
Ann E. Brady
J. Elizabeth French Engan
F. Jane Eyre
Joan Power Gaylor
June Parry Hard
Ruth Plass Henry
Jean Judson Larkin
Joyce Ford Manning
Crystal Isham Michel

Phyllis Church Moore
 Patricia Spencer Palmer
 Marilyn Michener Parsons
 Helen Seyter Plumb
 Lida Vosburg Secor
 Paula Seaburg Starner
 Faith Burrell Tristan
 Wilburetta McDonald Wilder
 Marilyn Fink Williams

1949

36% Participation

Clare Dennison Society

Dorothy Dobmeier Berdan
 Elizabeth Salisbury Clarke
 Allene King Covey
 Dorothy Mundy Dodds
 Mildred Wright Gilmour
 Janet Amendt Groover
 Lorraine Cleason Healy
 Lois Ferguson Hill
 Marie Caldwell Joyce
 Carol Pfleeger McKeenan
 Lois C. Miller
 Rosemary Brinkman Nachtwey
 Jane Webb Pearce
 Barbara Brown Scanlon
 Gloria Barresi Viverto
 Laretta Schulze Williams

1950

37% Participation

Grace L. Reid Society

Donabeth Shoop Jensen
 Elizabeth Weterrings Smith

Clare Dennison Society

Jeannine Mathyer Ansell
 Jacqueline Benson Auricchio
 Helen Tranter Carrese
 Marjorie Thomes Chapin
 Adelaide Millar Daly
 Jean Miller Dirx
 Velma Cavagnaro Durland
 Jean McCullough Engman
 Charlotte Samuelson Gibson
 Shirley Kelly Griggs
 Barbara Horton Handy
 Joan Curtis Hutchison
 Corinne Hays Kramer
 Genevieve Porter Lotz
 Anna Rowe McWilliam
 Ann Pitzer Nason
 Barbara Nodine Taylor

1951

50% Participation

Dean's Diamond Circle Associates

Nancy Whitcraft Hare

Helen Wood Society

Dorothy Hill Crim

Grace L. Reid Society

Rose Fallico Finelli
 Gretchen Towner Parry
 Mary Luther Redline

Clare Dennison Society

Barbara Wilt Beam
 Elizabeth Lilygren Bonvin
 Laura Hakes Brown
 Gertrude Blackwood Cotanche
 Marjorie Dawley Davenport
 Beverly Wood Eisenbraun, '75, '87M
 Elizabeth Mayer Gries
 Jennie VandenHeuvel
 Hoechner
 Verna Bean Izzo
 Margaret Wilson Jensen
 Dolly McFadden Kelly
 Gloria Harrington Martinez
 Audrey Brown McIntosh
 Joan Meister
 Janet Canning Rae

1952

48% Participation

Dean's Diamond Circle Patrons

Margaret Pinker Dempski &
 Robert E. Dempski

Grace L. Reid Society

Louise Genberg French
 Barbara Williams Heggie
 Marylyn Ernest Straight

Clare Dennison Society

Kathleen Spotts Backus
 Barbara Barrett Best
 Barbara Doud Cameron
 Marilyn Kayner Canfield
 June Bond Carlson
 Louisa Bliven Coffin
 Ann McAvoy Daniluk
 Lois Brooks Davis
 Norma Gibson Griffith
 Marilyn Shelanskey Hudson
 Judith Gustin Humphrey
 Mary J. Janecek
 Roberta Owen Johnston

Katharine Connell Koch
 Barbara Strider Kuehn
 Carol Benson Lloyd
 M. Suzanne Millan
 Mary Williams Nelson
 Doris Sherrill O'Connor
 Lenoire Meyer Orr
 Eileen Churchill Slocum
 Patricia Faulds Smith
 Beverly Richardson Verbridge
 Maureen Collins Warren

1953

39% Participation

Dean's Diamond Circle Associates

Shirley Gantz Garvin
 Anna Morenus Van Slyke

Helen Wood Society

Janeen Lane Fowler

Grace L. Reid Society

Mary Jane Casbeer
 Ethel A. Nelson

Clare Dennison Society

Eva Vecchi Aldrich
 Phyllis Padgett Beard
 Joanne Liersch Bodwell
 Ann Sheppard Carey
 Mary Warren Coutts
 Janice Jacobs Currie
 Barbara Skasko Dino
 Nancy Whipple Erbland
 Alice Monroe Gannon
 Mary Wendelboe Kissele
 Mary Franzen Latko
 Jeannine Chamberlain Lawrence
 Nancy McFadden MacWhinney
 Rowena Hallauer Nadig
 Ruth Bohnet Reinhardt
 Helen Tice Rogers
 Eleanor Coe Sorbello
 Vivian Gledhill Wakeley
 Marion H. Weber, '63M
 Marilyn Beaver Yoxall
 Donata Labella Zartman

1954

33% Participation

Dean's Diamond Circle Associates

Nancy Lyons Evarts

Helen Wood Society

Dorothy Hendrick Dickman
 Ruth Fisher Whitcomb

Clare Dennison Society

Nancy Harter Bowman
 Phyllis Frankson Bricker
 Nancy Jones Dainty
 M. Charline Daniels
 Shirley Purdy Galens
 Geraldine Begier Kendall
 Ann Scully Liebers
 Emily Oliver Lindblom
 Joan Bell Marden
 Ruth Gruber Mettler
 Marjorie Smith Ophardt
 A. Mahaney Prugel
 Ann Garland Rowe
 Carol Greenwald Scouler
 Carolyn Huyett Shutt
 Dorothy Gardner Sieling
 Theda Leet Smith
 Susanne Smith Sparagana
 Patricia Crowley Trimble

1955

39% Participation

Dean's Diamond Circle Patrons

Janet Eddy Scala & Robert
 A. Scala

Grace L. Reid Society

Evelyn M. Lutz

Clare Dennison Society

Phyllis Colby Amdur
 Bernice Jameson Belt
 Sarah Johnson Cloughly
 Dorothy Fabing Coburn
 Ruth Richardson Collier
 Mary Ott Curwen
 Joan Capecelatro Esposito
 Dorothy Lawrence Favaloro
 Joan Walsh Hartzog
 Ann Marie Johnson
 Marilyn Brownell Jones
 Judith Eckhard Kraemer
 Marianne Edgecomb
 Lombardi
 JoAnn Bernice Perry Newland
 Phyllis Buell Nye
 Ruth Gerber O'Gawa
 Isabelle Guenter Ohlwiler
 Betty Parmerter Peterson
 Sallyann Reed Rice
 Patricia Harris Rogers
 Gail Robyn Seeley
 Sandra Vantuyll Spindler
 Norma Pfeiffer Stewart
 Patricia Larsen Terry
 Joan Vecellio Torpie
 Arlene Zavitz Venkates

1956

39% Participation

Dean's Diamond Circle Associates

Julie Keyser Sanford

Grace L. Reid Society

Carol A. Brink, '62
Mary Enos Granger & James A. Granger
Joan Diamond Haws
Beatrice Wei Kam
Ann McSweeney Klos

Clare Dennison Society

Dorothy McCarthy Brennan
Theresa Bagnara Cooper
Mary Ann Daley, '80M
Dolores Miller Dewhirst
Mary Test Dietzen
Joanna R. Donk
JoAnn Ann Dulin
Joanne Empey Fiaretti
Evelyn Morrison Ghyzel
Carol Grover Goddard
Marcia Collins Hayes
Jane Strother Hill
Sharon Mason Johnson
Isabel Stepanian Krempa
Mary Lou Hinkel McDonald
Beverly Ann Schulz Miller
Carol Vogt Nichols
Lois Orton Odell
Johanna Brendecke Overton
Nancy Butler Schultz
Jane McDonald Shotkin
Virginia Hannum Snyder
Carolyn VanOrder Wyatt
Elizabeth Burton Zwergler

1957

41% Participation

Grace L. Reid Society

Diana Winslow Maude
Shirley Jones Payne
Esther Turkington Simons

Clare Dennison Society

Barbara Niesser Adams, '72M
Dorothy Doble Betler
Pauline Hughes Blossom
Jeanette Marvin Brown
Carol Forsberg Camp
Caroline Jones Carlson
Lois Mundy Carlson
Barbara Oakes Horvath
Patricia Magin Hritz
Joan Rupar MacLean

Jean Stone Moncrief
Ruth Williams Parker
Carol Carpenter Peters
Susan Shields Pettis *
Virginia Myers Polgrean
Mary Hogue Rose
Marilyn Light Sawdey
Gracia Harding Sears
Marcia Carey Streb
Ruth Chambers Thompson
Phyllis Vollert Wettermann, '62M
Joanne Siegenthaler
Williamson

1958

28% Participation

Grace L. Reid Society

Marian Jacobs Brook
Carol Hammond Laniak
Margaret Steele Trott

Clare Dennison Society

Joan Holran Benneyan
Patricia Meland Bond
Maureen Shinnock Gibbons
Sharon Oliver Karle
Beverly Parker Mellini
Colleen O'Kain Mills
Carole Markley Morris
Sonja Carlton Poe
Jean Booker Roberts
Ellen Older Smith
Gail Geiger Smith
Deanna Jeanne Warren, '72
Marcia Milton Wilson

1959

44% Participation

Dean's Diamond Circle Associates

Gretchen Stotz Gray

Grace L. Reid Society

E. Diane Fletcher-White
Jean Marie Walter Kimmel
Marilyn G. McClellan

Clare Dennison Society

Phyllis Roehm Bailey
June Ingleson Brush
Andrea Reule Butler
Astrid Sandberg Cooper
Carolyn Chaloner Dow
Virginia Reed Fisher
Louise Derushia Holmes
Georgann Colwell Huff
Sheryn Hansen Huff
Janet Hoad Hutchins

Patricia McGovern Jedrey
Virginia Atwood Kamke
Nancy S. Manning
Francine Donaruma McCarthy
Nancy Benton McGowan
Eva Pang Pan
Christa Brauch Perea
Marianne Moore Randall
Marjory Heisler Shriver
Molly Malchow Szumiloski
Ruth Fischer Warburton, '64

1960

38% Participation

Dean's Diamond Circle Associates

Anne Larkin Gardner, '83

Helen Wood Society

Sharon Cyrus Matthys

Clare Dennison Society

Laura Fischer Armbrecht
Karen Johnson Brizendine
Suzanne Klopp Burggraaff
Marilyn Robinson Cline
P. O'dea Culhane Coughlin
Dorothy L. Dahm
Carol Herendeen Dambrose
Mary Ellen Carlson Gaynor
Donna Rauch Handy
Marilyn Dueger Hurlbutt, '64M
Cynthia Gaztambide Karwick
Jacqueline Mangin Keenan
Suellen Sampsell Miller
Beverly Russell Olszewski
Pauline Johnson Robertson
Harriet Schafer Seigel, '76M
Nancy H. Wallo
Nancy J. Wink
Diane Koegel Wintermeier

1961

48% Participation

Dean's Diamond Circle Benefactors

Eleanor Hall, '61HNR

Helen Wood Society

Karen Webb Sutherland

Grace L. Reid Society

Frieda Bentzvandenbergh Bailey
Phyllis Robinson Hasbrouck

Clare Dennison Society

Susan Jones Boulay
K. Patricia Miller Derajtys
Barbara Eckstrom Globus

Elizabeth Wilson Fraser, '64M
Karen Waters Freeman
Marlene Reed French
Barbara Long Green
Patricia Wheeler Green
Janet Moyer Hilliard
D. Jane Griffiths Honeyman
Carol Dart Markham
Carol VanVechten McGowan
Ann Hall Myers
Lynn Bastian Nalbhone
Nancy Glover Nelson
Kay Diane Crantz Ramsay
Phyllis Ackerman Rosenbaum, '66M

Barbara Tremaine Sanford
Sally Ann Shea
Christina Ganey Short
Margaret Sindoni Smith
Catherine Rogers Spragins
Marian Howse Stephenson
Jeanie Maddox Sy
Nancy Rich Van Hoooydonk
Kathleen Trigg White
Jean Davies Wood

1962

28% Participation

Dean's Diamond Circle Associates

Elizabeth Gunn Sonnenschein

Helen Wood Society

Carol Bieck Henretta, '62M
Jane Merritt Land

Grace L. Reid Society

Ann Fenton Luke
Judy Lord McFarlin

Clare Dennison Society

Carol Boozer Barnard
Margaret Piper Bushey, '92M
Edith Arguimbau Davidson
Janet Russell DeSimone
Anne Van Rennselaer Egan
Jean Conta Holland
Bonnie Palmer Hull
Janet Anderson Johnson
Janice Vandenburg Keitz
Emily Jones Lawrence
Stella Hulsberg Megargle
Sharon Carlson Nazarian
Karen Robinson Shinn, '90, '91M
Frances Wustrack Smith
Barbara Purcell Sosiak
Janice Barfoot Stradling
Josephine Emy Whang

1963

26% Participation

Helen Wood Society

Susannah Mallery Rank

Grace L. Reid Society

Carole Hartwig Schroeder

Clare Dennison Society

Patricia A. Balon
 Beverley Sill Baschnagel
 Jane Brandon Binns
 Suzanne Festersen Clark, '63M
 Judith Mootz Dixon
 Deborah Greabell Dougan
 Tozia Shemanski Engleman
 Kathleen Marciano Hall
 Nancy Curry Hojnacki
 Linda Dellinger Jackson, '75M
 Barbara S. Kittell
 Carole Holovka Koster
 Nancy Follett Martin
 Mabelle Bauch Pizzutiello
 Emma Hoeffner Potter
 Gayle Ann Traver
 Ann Rosa Weitzel, '80M

1964

31% Participation

Helen Wood Society

Genevieve Kaiser McQuillin, '64M

Clare Dennison Society

Elizabeth Hodge Butler
 Helene Shetler Charron, '66M
 Elizabeth Holczimmer Koehler, '67M
 Joyce Loreen Ludwig
 Deborah Lawrence Malone
 Lynda Bailey Muir
 Ellen Frehner Newton
 Marilyn Neff Repsher
 Elaine Bound Siu
 Jayne L. Zinke

1965

29% Participation

Dean's Diamond Circle Fellows

Madeline Hubbard Schmitt

Helen Wood Society

Eileen Cherba Berry
 Bonnie Warga Biskup

Grace L. Reid Society

Joan Kallenbach Thorn

Clare Dennison Society

Marjorie Stevens Branca
 Catherine Searles Dashevsky, '69M
 Jane Luna Rieger
 Inez Boyd McClary
 Peggiann Karpf Nuccio
 Judith Steege Pease
 Anne Englert Ross
 Corte J. Spencer
 Janet Wagner
 Caroline Bedette White
 Kay Seawall Yost

1966

34% Participation

Dean's Diamond Circle Associates

Helen Boyce McNerney, '66M

Clare Dennison Society

Elizabeth Hooper Allen
 Marion Dreby Brile
 Judith Wood Bunting
 Ann Parke Burr
 Dorothy Costich Cox, '66M
 Jan Deyoung Fink
 Sharon Milligan Fischer
 Heide Froschmeier George
 Marlene Johnson Glickert
 Janet Wakeley Johnston
 Joyce Weber Loughlin
 Sandra Olsen MacMurray
 Nancy Rhodes Rehner, '66M
 Deborah Peterson Tight

1967

26% Participation

Dean's Diamond Circle Advisors

Marilyn Sandra Fiske & Harold H. Gardner

Dean's Diamond Circle Fellows

Jeanne Tuel Grace, '83M, '89PhD & Robert E. Grace

Grace L. Reid Society

Susan Donahue Badger
 Virginia Bley Reiter

Clare Dennison Society

Mary Drury Dewey
 Leslie Gordon Evans
 Joanne Jones Gough
 Nancy A. Kent
 Susan Griffiths Miller
 Maureen O'Rourke Richardson, '89M

1968

30% Participation

Grace L. Reid Society

Joan Estelle Lynaugh, '68M

Clare Dennison Society

Pamela Ickes Allen
 Janet Fish Baldwin
 Lynne VanBeuren Browne
 Diane A. Guida, '68M
 Carla Bergstrom Johnson
 Rosemary Snapp Kean
 Margaret Smith Keiffer
 Janet Scroger Peer
 Janet Page Price
 Barbara Williams Ruggere
 Adair Bowman Small & Kenneth A. Small
 Ardith Albers Wylie
 Sharon Monnat Yousey
 John J. Zarola

1969

21% Participation

Grace L. Reid Society

Leslie Jaffe Miller

Clare Dennison Society

Jane Mooney Bertram
 Elaine Pipe Biddle
 Linda Jenkins Farrand
 Nancy Covell Fisher
 Geraldine Marciano Kraemer
 Mary Louise Miller, '69M
 Kathleen Stoeckl Neuner, '69M
 Carolyn Marie Schodt
 Maria Kleinheidt Smith, '69M
 Hilary Weed Ware
 Hilda Peterson Wolf

1970

17% Participation

Clare Dennison Society

Marilynn R. Reines Bernstein
 Cheryl Davis Kline, '93M
 Kathleen Corning Raymond
 Janice Steiner Rogers, '70M
 Lucy Ross Wasileski

1971

25% Participation

Dean's Diamond Circle Associates

Lillian Davis Nail, '75M, '85PhD

Grace L. Reid Society

Anne Findlay Swope

Clare Dennison Society

Alice Witkowski Breen
 Wilma Henry Brigham
 Winifred Roth Fenner
 Louise H. Flick
 Mary Mandrick Frank
 Hilda Mary Frediani, '71M
 Carolyn Feyder Hokanson
 Carol Blanchard Kenyon, '76M, '86PhD
 Mary Tapke Kwiatkowski
 Marcia McCarthy Neundorfer
 Suzanne Elizabeth Reitz
 Nancy Kappus Schear
 Beverly Monnat Skram
 Marianne Doran Steinhacker, '71M
 Ellen Tanneberger Stiles
 Patricia Gallant Wasserman

1972

24% Participation

Grace L. Reid Society

Kathryn Phillips King
 Karen Johnson Wilson

Clare Dennison Society

Judith Ann Cassidy
 Mildred Swonder Cochran, '72M
 Jean Garling, '72M
 Bonnie Beggs Lincoln
 Margaret Trani Lowell
 Ellen Furney Magnussen
 Rose Comella Newhart
 Marcia Beth Pehr
 Jeanette Ruyle
 Deborah Flint Scarpino
 Karen Knaebel Scott
 Mary Lou Wranesh Cook, '78M

1973

38% Participation

Grace L. Reid Society

Kay A. McCulloch Melnyk, '73M,
'85PhD

Clare Dennison Society

Marguerite Lindley Almanas
Sharon Anderson Babbitt
Donna Powell Belanger
Lynne Hall Blanchard
Susan Griffey Brechin
Sandra Nugent Chenelly, '79M
Nancy Houseknecht Chernetz
Rosemary Cremo-Smith
Lesley J. Dawson
Frances A. Deslauriers
Judith Hoffman-Knobloch
G. Levering Keely Jr.
Martha Kleinerman
Dawn Texter Lindsey
Kathy Ann Lynn Lindstrom
Barbara Ann Lum, '73M
Valerie Sand Miller
Nancy J. Newton
Christina D. Slazak, '73M
D. Connie Stilwell
Rosemary Higgins Strub
Michelle Young-Stevenson

1974

25% Participation

Grace L. Reid Society

Patricia M. Bull
Maureen McCarthy Friedman,
'91PhD

Clare Dennison Society

Lynn Casper Burne
Gloriela Olivares Burns
Bonnie Smith Doell, '88M
Jane Kobler Fields
Karla Slayton Fogel
V. J. Pearson Gibson
Mary Perri Glasow
Gabriele Kuett Harrison
Andra Creamer James
Carolyn Joint Mitchell
Mary Keenan Monteverde
Linda Marcoff Mueller
Sandra Jean Vancamp, '76M
Ilene Franchetti Wallmueller, '82M
MaryPat Downey Whitehead

1975

24% Participation

Helen Wood Society

Deborah S. Storm

Grace L. Reid Society

Joanne Amelia Shaughnessy

Clare Dennison Society

Margaret Anne Burkhardt, '75M
Kathleen D. Conroy
Thomas F. Costello, '75M
Linda Butz Goodenough
Corinne Bush Kinnicutt
Mary Kniep-Hardy, '75M
Mary Ellen Kunz, '75M
Judith Kremnick Lapping
Debra Kleinberg Luger
Amy L. MacNaughton
Joanne Fioravanti Makielski, '78M
Polly Himes Mazanec
Margaret Monske Mullin
Edythe August Parker
Roseann Kolber Roberts, '75M
Virginia Hand Shaw
Susan Harford Terwilliger, '79M

1976

26% Participation

Dean's Diamond Circle Patrons

Susan Halverson Cornelius, '76M

Dean's Diamond Circle Fellows

Kathleen B. King, '76M, '84PhD

Dean's Diamond Circle Associates

Carol Buttenschon Feeney &
Kevin Feeney

Clare Dennison Society

Suzanne Schlicht Aquilina, '76M
Teresa Barnwell-Riley
Rita Ferrari D'Aoust, '84M
Barbara Murphy Edlund, '76M
Darry Bridges Guli
Helen Elizabeth Hertzog
Carolyn Graham Holt, '76M
Rosemary Johnson, '76M
Beverly Palmer Kemmerling,
'76M
Irene Kojen
Linda P. Lawrence, '76M, '75M
Margaret DeLong Martin
Joan Luce Maset
Althea Mix-Bryan

Barbara Weeden Pasley
Martha Augusta Paulson
Marilyn McGregor Plass
Linda R. Rounds, '76M
Catherine Shear Schoonmaker,
'76M
Heather L. Spear
Cathy Miller Stein
Carol Croston Thompson
K. Albright Thorsos

1977

28% Participation

Helen Wood Society

Mary Oliver Hauptmann
Lisa Helen Norsen, '83M &
Edward J. Wall

Grace L. Reid Society

Marsha Still Pulhamus, '83M
Joanne Skelly-Gearhart, '84M

Clare Dennison Society

Claudina Ashelman Owen
Jane Johnston Balkam, '77M
Martha Patell Blount, '77M
Joanne Vandevalk Clements, '88M
Lisa Quay Corbett
Anna Cohen Eisenberg, '77M
Amy Gilman Flannery
Anna Christina Gramm
Margaret J. Greenlees
Mary Murphy Helak
Barbara Stewart Jacobs
Carol Lambie-Parise
Patricia Oliver Lane, '77M
Regina Parise Lewis
Kim Olin MacDonald
Jeanne Lavigne Matthews, '77M
Rosette Sunray Moss
Linda Noack Toole
Donna Martin Willome, '77M

1978

30% Participation

Helen Wood Society

Mary-Therese Behar Dombeck,
'78M
Diane R. Lauver, '78M, '87PhD
Suanne Miller Lippman, '78M

Clare Dennison Society

Joseph M. Achtyl
Mark Q. Andrews
Nancy Barry Bond
Barbara Botz Brennan
Steven E. Buckley, '78M
Carolyn Keith Burr, '78M

Janelle Repair Callaway
Nancy Campbell-Heider, '78M,
'88PhD
Michele Stein Capellupo, '91M
Lori Stoler Conway, '83M
Cynthia Darling-Fisher, '78M
Susan Enzbrenner DeRosa, '78M
Fern B. Drillings
Robert L. Elliott, '78M
Anne M. Evans, '78M
Beverly Ziegler Faro, '78M
Carol Lee Hondorf, '78M
Michelle Smith Kaskey
Mary Jo Korfhage-Poret
Margaret Eberts Lind
Joanne Malacarne-Karras
Patricia Hamill Martin, '78M
Lois Koch Marvin, '78M
Deborah Povilonis Mullarkey
Susan Schaertl Natalizio
June Iris Richardson
Mary Fitch Rubenstein
Elaine A. Slabinski, '78M
Donna Kinney Smith, '78M
Sandra Susan Sopchak
Carolyn Springfield-Harvey, '78M
Melinda Brieese Spry
Alison Miller Trinkoff
Barbara Anne Urich, '87M
Katherine Lazary Veals
Carol Anne Wilson, '78M
Geraldine Lobiondo Wood, '78M

1979

27% Participation

Grace L. Reid Society

Susan Elizabeth Harrington
Jill Neuman Quinn, '79M
Jane I. Tuttle, '84M
Tamara A. Mueller Urmev

Clare Dennison Society

Elaine Hughes Andolina, '79M
Elizabeth Ireland Barnes, '79M
Patricia Pease Casaw, '79M
Catherine A. Cassidy, '79FLW
Arline Aman Christ, '79M
Sandra Blaney Good, '79M
Rosalie H. Hammond, '79 M
Charlotte Frederick Hasenauer
Lynn Greer Horowitch, '88M
Virginia Klein Hurley, '01M
Carol Young Jones
Gina Coyne Kay
Lynne Ringwood MacConnell,
'84M
Barbara Aponte Marino
Peter F. Miraglia

L. Balbierer Noble
 Virginia Elaine Parry, '79M
 Margaret Page Redka, '79M
 Rona Horowitz Remstein
 Rosemary Ann Roth, '79M
 Mary Zuccolotto Scanlon, '83M
 Raelene Shippee-Rice, '79M
 Rosemary Whitman Somich,
 '79M
 Elinor M. Stanton, '79M
 Honora Anne Tabone, '87M
 Mary Dziwis Weins, '82M
 Ann Delaney Weiss
 Delores Leavitt Wetter, '79M

1980
 20% Participation

Grace L. Reid Society
 Eileen Sullivan-Marx, '80M

Clare Dennison Society
 Lorie Sue Banker
 Sandra S. Berg, '80M
 Aileen Beneroff Binder
 Veronica Hartenhoff Burke
 Susanne M. Campbell, '80M
 Roseanne St. Thomas DiVincenzo
 Mary Norton Feins, '80M
 Pearl Helen Kahn
 Betty Pcionek Lapp, '80M
 Suzanne Gorman Maithel
 Merle Erb Mast, '80M
 Candace Klimesh Moser
 Donna Milburn Mummery
 Rebecca Smith Olsen
 Sherry Hobgood Pomeroy, '80M
 Patricia Kroemer Rimar
 Marie Dellaporta Stahl, '80M
 Mary Jean Thomas, '80M
 Elizabeth Weld Vaczy, '88M

1981
 32% Participation

Dean's Diamond Circle Patrons
 Mary Moore Insel, '81M &
 Richard A. Insel

Grace L. Reid Society
 Susan A. Flow

Clare Dennison Society
 Susan Dierken Ames, '81M
 Ruth Putney Blackman
 Joan Baker-Yager Castleman,
 '81M
 Janet Clough
 Sue Ellen Collins, '81M
 Patricia Corbett-Dick, '87M

Kenneth E. Corey, '81M
 Vicki Weinstein Finnefrock, '81M
 Susan Possidente Good, '81M
 Nancy Nelson Gorman
 Margaret Mould Hanna
 Charlyne Miller Hickey, '81M
 Nancy E. Kane, '81M
 Patricia Lindley, '81M, '90PhD
 Karen Dillinger Lohan
 Pamela Gay Lowe, '81M
 Nancy Cox Mills, '81M
 Heidi F. Peck
 Erika Myers Pfeiffer, '81M
 Janet Schwert Plosser
 Laurie Peck Reifenstein
 Theresa M. Schwartz, '81M
 William G. Stone
 Marshelle Thobaben, '81FLW
 Joan Insalaco Warren
 Patricia Diane Welsh, '81M
 Kathleen Tuthill Young, '81M

1982
 19% Participation

Grace L. Reid Society
 Elizabeth L. Wisler

Clare Dennison Society
 Deborah Forrest Ash
 Eleanore Bertin Colucci
 Marilyn A. Boogaard, '82M
 Cheryl Smith Bush
 Carmen Louise Christopherson,
 '82M
 Mary Sprik Couillard, '82FLW
 Cynthia Longo DiMaggio
 Marcia J. Goldstein
 Joan Earle Hahn
 Amy Tanaka Lwin
 Jean Mack-Fogg, '88M
 Ann Hix McMullen, '82M
 Midge Chafee Miller, '82M
 Susanne Mayre Mohnkern, '82M
 Kathleen Manicini Moore
 Laurie Hasbrouck Mortensen
 Pia Stanek Schmekel, '82M
 Laurie Ann Coleman Tate

1983
 14% Participation

Grace L. Reid Society
 Marjorie Norton Blondell, '83M
 Veronica Birki Hychalk, '83M

Clare Dennison Society
 Mary Bartlett Beltracchi
 Therese Ann Caffery, '83M
 Sharon O'Gawa Dommermuth

Robyn Vincent Edwards
 Nancy Walker Gaden
 Jacqueline Ann Koscelnik
 Dorothy I. Meddaugh, '83M,
 '87PhD
 Carolyn Magee Nolan, '83M
 Sandra Merritt Perry, '83M
 Joanne Melloni Reiss
 Linda Pierce Smith
 Donna Winderl-Malyak, '83M

1984
 24% Participation

Dean's Diamond Circle Associates
 Joanne Copeland Rodgers, '88M
 & David M. Rodgers

Grace L. Reid Society
 Judith Gedney Baggs, '84M, '90
 PhD & Raymond B. Baggs

Clare Dennison Society
 Paul J. Archibald
 Karen Merl Banoff
 Pamela Ann Brady, '86M
 Linda Kuebler Curiale
 Sharon Dudley-Brown
 Karen Duffy-Durnin, '84M
 Sarah A. Floyd
 Susana Recalde Grammatikos
 Teresa Landry Grimm
 Christine Marie Lupiani
 Sharon Clark Mariani
 Sarah Alice Martin
 Louise Walker McDougal, '84M
 Susan Lansbury Mulvehill
 Teresa Marie Perrault, '89M
 Anne Maxwell Pilewski
 Mary Louise Schworm
 Carol Tymeson Warmuth
 Eleanor Koestner Weinstein, '90M
 & Steven J. Weinstein
 Linda Roach Yanklowski, '84M

1985
 16% Participation

Clare Dennison Society
 Carolanne Bianchi, '85M
 Arthur W. Broadhurst Jr.
 Melanie Dietrich-Dutt
 Julia M. Keesey
 Mary Lee LaForest, '90M
 Eletha C. Lectora, '85M
 Debra George Litzenberger
 Judith Simmons Neuderfer, '85M
 Karalyn Goldberg Rabin

Eileen Westlake Lumb, '85M
 Margaret A. Wiltberger

1986
 14% Participation

Helen Wood Society
 Nancy Melvin Taylor

Grace L. Reid Society
 Patricia M. Allen, '86M
 Rigmor G. Miller, '91M

Clare Dennison Society
 Wendy Potter Dailey, '86M
 Regina Csuka Evans
 Catherine Voelker Fliegel
 Katherine Scrimgeour Hoose,
 '02M
 Janice J. Jurgens, '86M
 Ellen Bates Leighow
 Linda Dombrowski Lord, '86M,
 '94PMC
 Amy Wasikko Roberts
 Kim McKinney Teng

1987
 19% Participation

Clare Dennison Society
 Mary Carmel Angerame, '87M
 Jeanne Frank Dewey
 Hollis Biggs Garver, '89M
 Sarah L. Hunt, '87M
 Anne Hill Keefer, '87M
 Patricia R. Lawrence
 Leslie Saunder Leon
 Marlene Boldt Liess, '92M
 Patricia Ann Macaruso, '87M
 Marta J. Maletzke, '87M
 Chrisanne Wendy Mansfield, '93M
 Lynn Michele Schneider, '87M
 Brigit Vangraafeiland, '90M
 Penny Shilling Warren

1988
 18% Participation

Clare Dennison Society
 Justine Gail Bentfield
 Jane Young Coolidge, '88PhD
 Cynthia Ann Galeota
 Melanie Granieri Loss
 Deborah Tibi Horst, '88M,
 '94PMC
 Janice Elizabeth Hurley, '88M
 Jennifer Buckley Lang
 Kathleen A. McGrath, '88M
 Marilyn Krolak Merritt, '88M

John A. Modrzynski Jr.
Cynthia Toole Munier, '88M
Deborah R. Pittinaro, '95M
Joann Romano-Egan, '88M
Melinda S. Sciera, '88M
Judith Spula Sternberg, '88M
Elizabeth Gutmann Weingast
Paula Holmes Zagrobely

1989

21% Participation

Helen Wood Society

Jessie Drew-Cates, '89PhD

Grace L. Reid Society

Patricia A. Tabloski, '89PhD

Clare Dennison Society

Elizabeth S. Caruso, '89M
Suzanne Benzoni Chang, '89M
Cheryl Elizabeth Field
Dalena Heitz Franklin, '89M
Cynthia Palenski Gibson, '89M
Margaret Mary Hull, '89PhD
Robyn Gibbs Lawton
Martha Riggs Malloy, '89M
Mary Napodano McCann
Betsy Ellen Painter, '91M
Nancy J. Pedersen, '89M
Beverly Slack Shaheen, '89M
Margaret Sager Tobin, '89M
Judith A. Vogt, '89M

1990

13% Participation

Helen Wood Society

Julia Lindeman Read, '95M

Clare Dennison Society

Ivy Faith Braun
Laura M. Pomilla Caruso
Alison Munroe Dura, '90M
Lori B. Hoffman, '95M
Sharon M. Mallory, '91M
Patricia A. Muir, '90M
Stephanie Elizabeth Von Bacho,
'94M

Susan Jacobus Wilson, '90M
Sharon Lee Zache, '90M

1991

8% Participation

Grace L. Reid Society

Nancy Margaret Watson, '91PhD

Clare Dennison Society

Dorothy Palmer Chilton, '91M
Rita Seymour Crowley, '91M

M. Susan Delahunty
Julie Tomaino Duff, '91M
Elizabeth Norris Shafer

1992

18% Participation

Clare Dennison Society

Kristin Rene Hayes Asis
Kathleen Farren Brennan, '92M
Judith E. Broad, '92PhD
Laurie Ann Danieu
Carole Farley-Toombs, '94M
Regina Carter Farmer, '92M
Donna M. Fladd, '92M
Jacqueline Sobaszek Fleming
Mary Jo Hohl
Mary Falk Kelly, '92M
Joanne Clark Lembach, '92M
Mary Jo Lockwood, '93M
Lisa Lynne Loveless
Bernadette Vulcan Melnyk,
'92PhD
Joanne Mary Monaghan, '92M
Anne L. Wagner, '92M

1993

9% Participation

Clare Dennison Society

Elaine Anne Cannon
Barbara Cull-Wilby, '93PhD
Susan Ochs Gaile, '93M
Carrie Dawn Gaynor
Susan Wrisley Groth, '93M
Debora Houghtalen
Eileen Margaret Johnson, '93M
Dianne Morrison-Beedy, '93PhD
Dawn Hallahan Rugelis, '93M,
'95PMC
Mary Hooper Wegenka, '93M

1994

16% Participation

Clare Dennison Society

Nancy E. Brinkwart, '94M,
'95PMC
Karen Glover Comstock, '94M
Kathryn Anne Drogan
Kathleen Mary Gaglione, '94PMC
Janet Lynn Harris, '94PMC
Theresa L Hart
Delores C. Henry, '98M
Susan Fredericks Hodes
Angela May Carlson Liberatore,
'94M
Bernadette Payne Macleod, '94M

Linda L. McHenry, '94M
Dorothy M. Meyer
Shari Ann Miller, '94M
Virginia R. Minster, '97M
Daniel R. Nowak, '94M
Mary C. Rivers, '94M
Cheryl Elizabeth Robinson, '94M
Rina Clogston Schnauffer
Brenda Pullyblank Seaman, '99M
Debra C. Smith
Pamela C. Smith, '97M
Michelle Roberta Stouffer
Dawn K. Urquhart, '97M

1995

8% Participation

Clare Dennison Society

Sandra Jane Brzoza, '95M
Carolyn B. French, '95M,
'00PMC
Mary E. Maxwell, '95M
Donna Marie McCagg, '95M
Dawn Ewing Mosher, '95M
Lynn M. Nagle, '95PhD
Jacinthe Pepin, '95PhD
Nancy L. Price, '95M, '99PMC
Judith Drechsler Watt, '95M,
'00PMC

1996

10% Participation

Clare Dennison Society

G. Ronald Beck, '99M
Connie Lynn Brais
Cheryl Della Sala, '96M
Erin Elizabeth Donnelly
Kelly Lynne Dumont, '96M
Joyce Eagan Gaudieri, '96M
Mary Minotti Gerbino, '96M
Karen Elizabeth Livornese
Renee Barber Robinson, '01M
Margaret Schrader Ross
Teresa Michelle Stanley
Carolyn G. Tinling, '96M

1997

7% Participation

Clare Dennison Society

Carrie Martine Carveth
Emma Rachel Coax
Laura A. Henry
Sharon Mille
Margaret M. Odhner
Diane Marie Salipante, '97M
Beth Kachmaryk Spatola

Kathryn McCabe Votava, '97PhD
Mary Ann Weber, '97M

1998

7% Participation

Clare Dennison Society

Therese M. Collins
Elaine Mary De Haas
Nancy Freeland, '98M
Michelle Stout Haeger, '98M
Mary T. Herr, '98M
Lesley Ann Johnson
Maureen E. Kiernan, '98M
Pamela Helen King, '98M,
'98PMC
Mio Patricia Osaki
Elaine G. Philipson, '98M

1999

8% Participation

Grace L. Reid Society

Janet Irish-Feltner

Clare Dennison Society

Tamara Twitchell Crafts, '99M
Deborah H. Eldredge, '99PhD
Beth Marie Fietze
Susanne E. Heiningner
Catherine Ann Junkans, '99M
Susan Baumler Lewish
John M. Rushforth, '99M
Shawn Nichola Smith

2000

10% Participation

Dean's Diamond Circle Founders

Loretta C. Ford, '00HNR &
William J. Ford

Helen Wood Society

Mary McGuire Torchio, '00M

Clare Dennison Society

Mary Lynne Bement, '00M
Geraldine A. Calandra-Adamid,
'00M
Jacquelyn Neuland Doyle, '00M
Nancy Fischbeck Feinstein,
'00PhD
Linda Grinnell-Merric
Nancy L. Hofmann, '00M
Diane M. Plumadore, '00M
Dianne Cullather Smith, '00M

2001

6% Participation

Clare Dennison Society

Kristina Elizabeth Cooper, '01M
Elizabeth Blu Glaser
Nancy Jeanne Pearson, '01M
Susan Marie Sweet, '01M
Kathleen Elizabeth Wilkinson

Matching Gifts

AT&T

Advanced Micro Devices
The Boeing Company
Carpenter Technology Corporation
Foundation
Cigna Foundation/Cigna
Corporation
Consumers Energy
Exxon Mobil Foundation
Gartner Group Charity Fund
General Electric Company
Halliburton Foundation
Harris Corporation
I.B.M. Corporation
Merck & Company, Inc.
Mobil Foundation, Inc./Mobil
Corporation
Moog, Inc.
Osram Sylvania Inc.
Schering-Plough Corporation
Telecordia
Time Warner Inc.
The UPS Foundation, Inc./United
Parcel Service
Varian Medical System Inc.
Verizon
The Xerox Foundation/Xerox
Company

**Corporate, Foundation,
Association and Organizational
Gifts**

American Nurses Foundation
Anonymous
Haberman Associates
Ayco Charitable Foundation
Brody Charitable Trust
Davenport-Hatch Foundation
Enterprise Rent-A-Car Foundation
Friedlander Family Foundation
Helene Fuld Health Trust
The John A. Hartford Foundation,
Inc.
Kirkhaven Nursing Home
The Lockwood Group
Parrs & Perotto LLP

Rochester Area Community
Foundation
Rochester Bicycling Club
Rochester Venture Capital Group
Rotenberg & Company LLP
The Sisters of Charity
Spindler Family Foundation
Tenants Association Springbrook
Apartments
STA Travel
Star Media Group Inc.
Thorn Family Foundation
Transcultural Nursing Society
Upstate Special Risk Services Inc.
Wolf Group New York Inc.-
Rochester

Gifts in Honor of:

MR. & MRS. WILLIAM CRIM'S
50TH ANNIVERSARY
Barbara Beam
Margaret Jensen

HELEN HATCH HELLER '37
Davenport-Hatch Foundation

ELAINE HUBBARD
Elizabeth Wisler

KATHLEEN KING, '76M, '84PhD
Mary Ann Torchio

Gifts in Memory of:

CHRISTINE A. ALLEN
James Granger & Mary Granger

SHARON BARNO
Nancy Bradstreet

RUTH BARTLETT
Eleanore Craig

LILLIAN VANBROCKLIN-
BLACK
Elizabeth Williams

RUTH MILLER BRODY,
'40, '42, '46
Jean Buehler

RITA C. CHISHOLM
Jane Luna Rieger

CAROL GROUNDS DODGE
Molly Szumiloski

KATHARINE M. DONOHOE
Madeline Schmitt

BERNICE GORDON
Joyce DiMarzo
C. John Matteson
Eugene Parrs
Judith Potter
Star Media Group Inc

DR. JEREMY A. KLAINER
Adrienne Antonucci
Haberman Associates
Paul Babitz & Brenda Babitz
Raymond Baggs & Judith Baggs
Dorothy Beavers
Raymond Bigelow

& Mary Bigelow
Irving Brent & Sue Brent
Martha Bulger
Douglas Burkhardt

& Donna Burkhardt
Beverly Bushart
Ann Candido
Lorraine Carroll
Daniel Cholish & Kathleen
Cholish

Jeremiah Clifford
& Mary Lou Clifford

Anne Coyne
William Cramer & Ann Cramer
Mary-Therese Dombeck
Kreag Donovan
Kenneth Fanton & Dolores Fanton
Janet Fitzpatrick
Jerry Francis & Judith Francis
Frances Gay
Barbro Giangreco
Arnold Gissin & Mary Jane Gissin
Timothy Guenther

& Monica Guenther
Walter Halpin & Marion Halpin
Donald Henderson
Bernice Hogan
Doris Holt
Mercele Jackson
Albina Janesko
Gerhard Klose

& Charlotte Klose
Henry Lane
Sherman Levey & Deborah
Ronnen

The Lockwood Group
Jeanne Loysen
Sandra Lux
F. Christine Marsden
Cornelius McKenna
& Patricia McKenna
Ralph Merzbach & Joan Merzbach

Hilda Milham
Jann Packard
Richard Palermo
& Mary Palermo
John Parrinello & Diane Parrinello
Parrs & Perotto LLP
Kathleen Pavelka
Erik Pell & Anne Pell
Glenn Pezzulo & Sally Pezzulo
Rochester Bicycling Club
Rochester Venture Capital Group
Larry Rockefeller &
Barbara Rockefeller
Howard Roeding & Joyce Roeding
Rotenberg & Company LLP
Irma Rumbutis
Kathy Scherer
Daniel Singal & Sarah Singal
The Sisters of Charity
Nancy Spezio
Tenants Association Springbrook
Apartments
STA Travel
Robert Stankard & Ada Stankard
Elizabeth Steinberg
Patricia Stewart
Charles Todd & Joann Todd
Inez Todd
Upstate Special Risk Services Inc.
Harold Van Voorhis & Kathleen
Van Voorhis
P. Keith Watson & Heather Watson
Linda Weinstein
Catherine Williams
Wendy Witterschein
Wolf Group New York Inc.-
Rochester
Marge York

ESTHER BUMPUS '49
Sandra Bumpus

ANNE SKIVINGTON, '39, '40
Helen Heller
Blanche Mansing
Donald McConville

McLouth Challenge

School meets challenge, receives \$2 million scholarship

Two years ago, the University of Rochester School of Nursing embarked on a challenge posed by the executor of the estate of Charles McLouth, III of Palmyra, NY. McLouth had become close to the School through the nursing care his sister received. He recognized the importance of the work done at the School to educate nurses who become leaders in their field.

The School is proud to announce that it has exceeded the \$1 million goal required by the Challenge. This scholarship will be important at a critical time as the School implements creative solutions to nursing education, practice and research during this severe nursing shortage. The McLouth Scholarship will provide essential resources to recruit nurses to the field and further the education of RNs at a time when we need it the most.

Hundreds of alumni and friends of the School of Nursing supported this worthwhile endeavor. Dozens made leadership contributions, and several made major gifts that we have highlighted in previous articles. Alumna Jane Ladd Gilman '42 provided the final major gift that put us over the top of our ambitious goal. In recognition of this gift, and of her years of leadership and support, the School is proud to name the Jane Ladd Gilman '42 Nursing Skills Lab. A dedication ceremony took place during reunion to celebrate this outstanding gift.

To all who made possible the School's success in meeting the McLouth Challenge, we thank you! Please know that your generosity will

touch the lives of countless nursing students in the future through the McLouth Scholarship Fund.

Donors:

- Joseph Achtyl
- Michael Ackerman
- Barbara Adams
- Kendra Adams
- Martha Adams
- Dorothy Alexander
- Gladys Alexander
- Elizabeth Allen
- Louis Allen (DECEASED)
- Pamela Allen
- Patricia Allen
- Marguerite Almanas
- Phyllis Amdur
- Alicia Anderson
- Holly Anderson
- Linda Andrade
- Mark Andrews
- Mary Angerame
- Anonymous Check Donors
- Adrienne Antonucci
- Suzanne Aquilina
- Paul Archibald
- Deborah Ash
- Claudina Ashelman Owen
- Haberman Associates
- Jacqueline Auricchio
- Sharon Babbitt
- Brenda Babitz
- Paul Babitz
- Susan Badger
- Judith Baggs
- Raymond Baggs
- Frieda Bailey
- Naomi Baker
- Janet Baldwin
- Jane Balkam
- Martha Ball-Pignataro
- Patricia Balon
- Karen Banoff
- Carol Barnard
- Teresa Barnwell-Riley
- Carolyn Barry
- Nancy Bartlett
- Beverley Baschnagel
- Phyllis Beard
- Dorothy Beavers
- William Bechtel
- Lena Beck
- Gloria Becker
- Susan Bell
- Mary Ellen Beltracchi
- Mary Bement
- Cheryl Bennett
- Justine Bentfield

- Luis Berrios
- Eleanore Bertin Colucci
- Barbara Best
- Dorothy Betler
- Carolanne Bianchi
- Beth Bickford
- Elaine Biddle
- Mary Bigelow
- Raymond Bigelow
- Aileen Binder
- Jane Binns
- Susan Blaakman
- Laura Black
- Ruth Blackman
- Marjorie Blondell
- James Blonsky
- Pauline Blossom
- Martha Blount
- Nancy Bond
- Patricia Bond
- Elizabeth Bonvin
- Marilyn Boogaard
- Susan Boulay
- Donald Bower
- Lisa Bower
- Nancy Bowman
- Nancy Boyer
- Nancy Bradstreet
- Pamela Brady
- Connie Brais
- Marjorie Branca
- Ivy Braun
- Alice Breen
- Barbara Brennan
- Dorothy Brennan
- Kathleen Brennan
- Irving Brent
- Sue Brent
- Wilma Brigham
- Marion Brile
- Carol Brink
- Nancy Brinkwart
- Karen Brizendine
- Judith Broad
- June Brockmyer
- Jacqueline Brown
- Jeanette Brown
- Laura Brown
- Lynne Browne
- June Brush
- Sandra Brzoza
- Steven Buckley
- Jean Buehler
- Martha Bulger
- Patricia Bull
- Judith Bunting
- Barbara Burcham
- Laura Burgess
- Suzanne Burggraaff
- Debra Burke

- Donna Burkhardt
- Douglas Burkhardt
- Sueann Burley
- Lynn Burne
- Gloriela Burns
- Carolyn Burr
- Cheryl Bush
- Beverly Bushart
- Margaret Bushey
- Elizabeth Butler
- Therese Caffery
- Marcia Cain
- Geraldine Calandra
- Janelle Callaway
- Jacquelyn Campbell
- Walter Campbell
- Ann Candido
- Marilyn Canfield
- Elaine Cannon
- Michele Capellupo
- Caroline Carlson
- Lois Carlson
- Helen Carrese
- Lorraine Carroll
- Adelaide Carter
- Laura Caruso
- Nancy Carver
- Carrie Carveth
- Patricia Casaw
- Mary Casbeer
- Catherine Cassidy
- Karen Chalanick
- Lois Chalecke
- Suzanne Chang
- Marjorie Chapin
- Sandra Chenelly
- Dorothy Chilton
- Daniel Cholish
- Kathleen Cholish
- Marie Christiansen
- Carmen Christopherson
- Suzanne Clark
- Reuben Clay
- Joanne Clements
- Jeremiah Clifford
- Mary Lou Clifford
- Marilyn Cline
- Monica Cloonan
- Sarah Cloughly
- Emma Coax
- Mildred Cochran
- Louisa Coffin
- Betsy Cohen
- James Cole
- Marion Cole
- Ruth Collier
- Sue Collins
- Therese Collins
- Patricia Colucci
- Kathryn Comella

Karen Comstock	Elizabeth diSant' Agnese	Sharon Fischer	Elizabeth Glaser
Helen Cone	Paul diSant' Agnese	Nancy Fisher	Marlene Glickert
Anne Connelly	Roseanne DiVincenzo	Marilyn Fiske	Carol Goddard
Kathleen Conroy	Dorothy Dodds	Denise Fitzgerald	Marcia Goldstein
Theresa Contons	Vicki Dodds	Janet Fitzpatrick	Sandra Good
Lori Conway	Margaret Dodge	Donna Fladd	Susan Good
Jane Coolidge	Bonnie Doell	Amy Flannery	Linda Goodenough
Kristina Cooper	Sharon Dommermuth	Jacqueline Fleming	Joanne Gough
Lisa Corbett	Joanna Donk	E. Diane Fletcher-White	Jeanne Grace
Kenneth Corey	Erin Donnelly	Louise Flick	Robert Grace
Susan Cornelius	Harriet Donnelly	Catherine Fliegel	Gladys Graham
Catherine Corrigan-Wall	Kreag Donovan	Sarah Floyd	Anna Gramm
Thomas Costello	Kreag Donovan	Karla Fogel	Susana Grammatikos
Gertrude Cotanche	Ethel Doyle	Loretta Ford	James Granger
Natasha Cottrell	Jacquelyn Doyle	William Ford	Mary Granger
Mary Couillard	Jessie Drew-Cates	Janeen Fowler	Melanie Granieri Loss
Mary Coutts	Kathryn Drogan	Jerry Francis	Sandi Grant
Anne Coyne	Sharon Dudley-Brown	Judith Francis	Barbara Green
Eleanore Craig	Karen Duffy-Durmin	Mary Ann Frank	Shirley Greenhalgh
Ann Cramer	Kelly Dumont	Dalena Franklin	Margaret Greenlees
William Cramer	Alison Dura	Elizabeth Fraser	Elizabeth Gries
Josephine Craytor	Velma Durland	Hilda Frediani	Norma Griffith
Russell Craytor	Barbara Eckstrom Globus	Nancy Freeland	Teresa Grimm
Doris Crough	Barbara Edlund	Karen Freeman	Linda Grinnell-Merric
Rita Crowley	Robyn Edwards	Martha Freeman	Janet Groover
Rose Crupi	Marian Eiband	Mary Freliga	Susan Groth
Barbara Cull-Wilby	Anna Eisenberg	Carolyn French	Monica Guenther
Katherine Cultrara	Beverly Eisenbraun	Louise French	Timothy Guenther
Linda Curiale	Deborah Eldredge	Marlene French	Diane Guida
Anita Curtiss	Robert Elliott	Maureen Friedman	Darry Guli
Mary Curwen	Kimberly Ellis	Helene Fuld Health Trust	Jeanne Hadfield
Rita D' Aoust	Linda Eminhizer	Nancy Gaden	Michelle Haeger
Wendy Dailey	Jean Engman	Kathleen Gaglione	Joan Hahn
Mary Ann Daley	Enterprise Rent-A-Car	Susan Gaile	Eleanor Hall
Carol Dambrose	Nancy Erbland	Shirley Galens	Marion Halpin
Laurie Danieu	Joan Esposito	Cynthia Galeota	Walter Halpin
Cynthia Darling-Fisher	Anne Evans	Alice Gannon	Rosalie Hammond
Catherine Dashevsky	Judith Evans	Anne Gardner	Barbara Handy
Marjorie Davenport	Nancy Everts	Harold Gardner	Jane Hanlon
Davenport-Hatch Foundation	F. Jane Eyre	Mildred Grant Gariss *	Margaret Hanna
Edith Davidson	Dolores Fanton	Jean Garling	Nancy Hare
Lois Davis	Kenneth Fanton	Hollis Garver	Susan Harrington
Lesley Dawson	Carole Farley-Toombs	Shirley Garvin	Janet Harris
Elaine De Haas	Beverly Faro	Joyce Gaudieri	Gabriele Harrison
M. Delahunty	Linda Farrand	Frances Gay	Theresa Hart
Margaret Dempski	Margaret Farris	Carrie Gaynor	The John A. Hartford Fndtn.
Robert Dempski	Dorothy Favaloro	Mary Ellen Gaynor	Joan Hartzog
K. Patricia Derajtys	Joan Fedkew	Heide George	Phyllis Hasbrouck
Barbara DeRiemer	Carol Feeney	Mary Gerbino	Charlotte Hasenauer
Robert DeRiemer	Kevin Feeney	Evelyn Ghyzel	Joan Haws
Susan DeRosa	Mary Feins	Barbro Giangreco	Marcia Hayes
Frances Deslauriers	Nancy Feinstein	Maureen Gibbons	Lorraine Healy
Jeanne Dewey	Winifred Fenner	Charlotte Gibson	Barbara Heggie
Dolores Dewhirst	Dorothy Ferrell	V. J. Gibson	Susanne Heininger
Dorothy Dickman	Cheryl Field	Wilda Gige	Helen Heller
Frances Dietrich	Jane Fields	Anne Gilbride	Donald Henderson
Cynthia DiMaggio	Beth Fietze	Jane Gilman	Carol Henretta
Joyce DiMarzo	Rose Finelli	Mildred Gilmour	Delores Henry
Barbara Dino	Jan Fink	Arnold Gissin	Laura Henry
Jean Dirkx	Mary Anne Fischer	Mary Jane Gissin	Mary Herr

Ruth Herzog	Carol Kenyon	Karen Livornese	(DECEASED)
Charlyne Hickey	Maureen Kiernan	Carol Lloyd	Donna McCagg
Lois Hill	Eris Kimble	Mary Jo Lockwood	Mary McCann
Sandra Hill	Jean Kimmel	The Lockwood Group	Marilyn McClellan
Janet Hilliard	Pamela King	Eleanor Lofthouse	Lucretia McClure
Dorothy Hintz	Martha Kleinerman	Karen Lohan	Donald McConville
Susan Hodes	Susan Klinefelter	Marianne Lombardi	Kay McCulloch Melnyk
Lori Hoffman	Ann Klos	Ernest Longman	Mary Lou McDonald
Nancy Hofmann	Charlotte Klose	Linda Lord	Louise McDougal
Bernice Hogan	Gerhard Klose	Joyce Loughlin	Ellen McErlean
Mary Jo Hohl	Lindsey Knoble	Elizabeth Love	Judy McFarlin
Carolyn Hokanson	William Knoble	Lisa Loveless	Lucile McGarrah
Jean Holland	Katharine Koch	Pamela Lowe	Jean McGillicuddy
Marion Holliday	Arlene Koerner	Jeanne Loysen	Carol McGowan
Carolyn Holt	Richard Koestner	Joyce Ludwig	Nancy McGowan
Doris Holt	Irene Kojen	Debra Luger	Kathleen McGrath
Carol Hondorf	Mary Jo Korfhage-Poret	Ann Luke	Linda McHenry
D. Jane Honeyman	Sarah Korzenski	Barbara Lum	Audrey McIntosh
Deborah Horst	Jacqueline Koscelnik	Eileen Lumb	Carol McKeegan
Barbara Horvath	Geraldine Kraemer	Jane Luna Rieger	Cornelius McKenna
Debora Houghtalen	Judith Krahmer	Christine Lupiani	Patricia McKenna
Jan-Lauritzen Hoyt	Corinne Kramer	Sandra Lux	Ann McMullen
Elaine Hubbard	Isabel Krempa	Amy Lwin	Helen Mc Nerney
Marilyn Hudson	Barbara Kuehn	Joan Lynaugh	Stella Megargle
Margaret Hull	Joyce Kuhr	Lynne MacConnell	Marilyn Merritt
Judith Humphrey	Mary Kunz	Kim MacDonald	Anne Merton
Sarah Hunt	Gary Kuter	Jean Mack-Fogg	Joan Merzbach
Janice Hurley	Mary Kwiatkowski	Joan MacLean	Ralph Merzbach
Virginia Hurley	Cheryl LaCasse	Bernadette Macleod	Ruth Mettler
Janet Hutchins	Mary LaForest	Sandra MacMurray	Dorothy Meyer
Joan Hutchison	Joan LaMonica	Amy MacNaughton	Elsie Meyer
Mary Insel	Jane Land	Nancy MacWhinney	Crystal Michel
Richard Insel	Margaret Lander	Suzanne Maithel	Hilda Milham
Mercelle Jackson	Raymond Lander	Joanne Makielski	Sharon Mille
Sallie Jackson	Henry Lane	Helen Malarkey	Beverly Miller
Barbara Jacobs	Patricia Lane	Marta Maletzke	Lois Miller
Albina Janesko	Jennifer Lang	Sharon Mallory	Mary Louise Miller
Jodi Jashembowski	Carol Laniak	Deborah Malone	Midge Miller
Marcia Johansson	Betty Lapp	Sally Mann	Rigmor Miller
Ann Johnson	Judith Lapping	Joyce Manning	Shari Miller
Eileen Johnson	Diane Lauver	Chrisanne Mansfield	Suellen Miller
Kathleen Johnson	Emily Lawrence	Blanche Mansing	Valerie Miller
Lesley Johnson	Jeannine Lawrence	Carol Marcklinger	Colleen Mills
Sharon Johnson	Linda Lawrence	Sharon Mariani	M. Mills
Roberta Johnston	Patricia Lawrence	Barbara Marino	Nancy Mills
Katherine Jones	Robyn Lawton	F. Christine Marsden	Virginia Minster
Catherine Junkans	Eletha Lectora	Andrea Marshall	Peter Miraglia
Virginia Kamke	Ellen Leighow	Patricia Martin	Althea Mix-Bryan
Deborah Kampff	Joanne Lembach	Sarah Martin	John Modrzynski
Sharon Karle	Leslie Leon	Gloria Martinez	Susanne Mohnkern
Michelle Kaskey	Sherman Levey	Lois Marvin	Marian Moir
Rosemary Kean	Susan Lewish	Joan Maset	Joanne Monaghan
Martha Kearns	Angela Liberatore	Margaret Maslyn	Jean Moncrief
Virginia Keefe-Hardy	Bonnie Lincoln	Merle Mast	Mary Monteverde
Jacqueline Keenan	Margaret Lind	C. John Matteson	Kathleen Moore
Julia Keesey	Emily Lindblom	Sharon Matthys	Carole Morris
Margaret Keiffer	Kathy Lindstrom	Diana Maude	Dianne Morrison-Beedy
Janice Keitz	Susan Lipe	Heidi Maughan	Candace Moser
Dolly Kelly	Suanne Lippman	Mary Maxwell	Rosette Moss
Nancy Kent	Debra Litzenberger	Rosemary Mazzacane	Linda Mueller

Lynda Muir
 Patricia Muir
 Deborah Mullarkey
 Ruth Mulligan
 Susan Mulvehill
 Ann Myers
 Rowena Nadig
 Lynn Nagle
 Lillian Nail
 Lynn Nalbone
 Susan Natalizio
 Lorraine Ndusha
 Doris Nelson
 Ethel Nelson
 Judith Neuderfer
 Marcia Neundorfer
 JoAnn Newland
 Ellen Newton
 L. Noble
 Lisa Norsen
 Faith Norton
 Daniel Nowak
 Gayle Nutile-Pimm
 Phyllis Nye
 Doris O'Connor
 Lois Odell
 Della Olivey
 Rebecca Olsen
 Beverly Olszewski
 Marjorie Ophardt
 Mio Osaki
 Yechiam Ostchega
 Hugh Outterson
 Johanna Overton
 Jann Packard
 Betsy Painter
 Elizabeth Palermo
 Mary Palermo
 Richard Palermo
 Patricia Palmer
 Edythe Parker
 Diane Parrinello
 John Parrinello
 Eugene Parrs
 Parrs & Perotto LLP
 Virginia Parry
 Marilyn Parsons
 Barbara Pasley
 Kathleen Pavelka
 Shirley Payne
 Ingrid Pearson
 Nancy Pearson
 Judith Pease
 Heidi Peck
 Nancy Pedersen
 Anne Pell
 Erik Pell
 Jacinthe Pepin
 Christa Perea
 Teresa Perrault

Carol Peters
 Betty Peterson
 Madeline Petrillo
 Glenn Pezzulo
 Sally Pezzulo
 Elaine Philipson
 Mabelle Pizzutiello
 Marilyn Plass
 Janet Plosser
 Diane Plumadore
 Madeline Pol
 Virginia Polgrean
 Brenda Pontillo
 Emma Potter
 Judith Potter
 A. Doreen Prangel
 Jane Prendergast
 Mary Pulcino
 Marsha Pulhamus
 Laura Pullen
 Jill Quinn
 Karalyn Rabin
 Kay Ramsay
 Marianne Randall
 Susannah Rank
 Kathleen Raymond
 Mary Redline
 Heather Reece-Tillack
 Gertrude Reed
 Jo Anne Rehfield
 Nancy Rehner
 Laurie Reifenstein
 Ruth Reinhardt
 Joanne Reiss
 Suzanne Reitz
 Mary Relich-Dudas
 Marilyn Repsher
 Dorothy Revell
 Sallyann Rice
 June Richardson
 Maureen Richardson
 Timory Ridall
 Donna Ries
 Patricia Rimar
 Mary Rivers
 Amy Roberts
 Jean Roberts
 Pauline Robertson
 Cheryl Robinson
 Renee Robinson
 Rochester Bicycling Club
 Barbara Rockefeller
 Larry Rockefeller
 David Rodgers
 Joanne Rodgers
 Howard Roeding
 Joyce Roeding
 Helen Rogers
 Patricia Rogers
 Joann Romano-Egan

Deborah Ronnen
 Laura Lee Rosato
 Mary Rose
 Anne Ross
 Margaret Ross
 Rotenberg & Company LLP
 Rosemary Roth
 Linda Rounds
 Mary Rowan
 Ann Rowe
 Ruth Rowley
 Mary Rubenstein
 Dawn Rugelis
 Barbara Ruggere
 Irma Rumbutis
 George Rumsey
 John Rushforth
 Dennis Ryan
 Diane Salipante
 Barbara Sanford
 Julie Sanford
 Marilyn Sawdey
 Barbara Scanlon
 Mary Scanlon
 Deborah Scarpino
 Nancy Schear
 Kathy Scherer
 Pia Schmekel
 Madeline Schmitt
 Rina Schnauffer
 Carolyn Schodt
 Carole Schroeder
 Melinda Sciera
 Brenda Seaman
 Gracia Sears
 Lida Secor
 Harriet Seigel
 Anne Sergent
 Elizabeth Shafer
 Julie Shattuck
 Joanne Shaughnessy
 Virginia Shaw
 Carole Shay
 Sally Shea
 Alice Sherman
 Raelene Shippee-Rice
 Carolyn Shutt
 Dorothy Sieling
 Jean Simmons
 Esther Simons
 Daniel Singal
 Sarah Singal
 The Sisters of Charity
 Elaine Siu
 Joanne Skelly-Gearhart
 Christina Slazak
 Barbara Smith
 Debra Smith
 Dianne Smith
 Donna Smith
 Elizabeth Smith

Ways to Give

NEW THIS YEAR: ONLINE GIVING

Gifts may be made online! Visit our secure server to make your gift.
<https://www.urmc.rochester.edu/development/Gift/makeagift.cfm>

CREDIT CARD

Donors may charge their gift to the School of Nursing with a Mastercard, Visa or Discover card.

UNRESTRICTED GIFTS

The Annual Fund enables the School to strengthen and enhance its nursing education programs and makes a difference for every School of Nursing student. The money provides support necessary to underwrite student scholarships and financial aid programs, and faculty and student research.

MEMORIAL AND HONOR GIFTS

Gifts "In memory" and "In honor" of our nursing alumni and faculty recognize the importance that the School played in their dear ones' lives and continues to support the "Rochester tradition." These gifts can be unrestricted or designated to a special fund.

At the donor's request, the surviving spouse or a designated family member will be notified of the memorial gift. For gifts made "In honor" to recognize a particular occasion or person, the Development Office will be happy to send a special letter to the honoree notifying them of the donor's tribute gift. Please call (800) 333-4428 or (585) 273-5945.

BEQUESTS

Bequests account for a major portion of the School's endowment and provide significant funding for the School's programs, facilities, and student aid. Bequests are made through a written and executed will.

Charitable giving through your will can benefit your heirs as well. Bequests that reduce the size of your taxable estate can reduce gift and estate taxes.

Frances Smith
 Gail Smith
 Louise Smith
 Margaret Smith
 Nancy Smith
 Shawn Smith
 Theda Smith
 Virginia Snyder
 Rosemary Somich
 Elizabeth Sonnenschein
 Sandra Sopchak
 Marie Sorel-Miller
 Barbara Sosiak
 Beth Ann Spatola
 Heather Spear
 Nancy Spezio
 Sandra Spindler
 Tenants Assoc Springbrook Apt.
 Carolyn Springfield-Harvey
 STA Travel
 Ada Stankard
 Robert Stankard
 Elinor Stanton
 Star Media Group Inc
 Cathy Stein
 Elizabeth Steinberg
 Marian Stephenson
 Judith Sternberg
 Mary Steszewski
 Jean Stevens
 Norma Stewart
 Patricia Stewart
 Ellen Stiles
 D. Connie Stilwell
 Edna Stockton
 William Stone
 Deborah Storm
 Michelle Stouffer
 Janice Stradling
 Marylyn Straight
 Marcia Streb
 Rita Studley
 Eileen Sullivan-Marx
 Jeanne Sumpster
 Esther Swales
 Kathy Sweeney
 Esther Sweet
 Susan Sweet
 Anne Swope
 Jeanie Sy
 Molly Szumiloski
 Marjorie Tabechian
 Patricia Tabloski
 Honora Tabone
 Christine Taylor
 David Taylor
 Douglas Taylor
 Nancy Taylor
 Kim Teng
 Carolyn Tenney
 Susan Terwilliger

Marshelle Thobaben
 Mary Thomas
 Carol Thompson
 Ruth Thompson
 Shirley Thompson
 Joan Thorn
 Deborah Tight
 Janis Tobin
 Margaret Tobin
 Charles Todd
 Inez Todd
 Joann Todd
 Linda Toole
 Mary Ann Torchio
 Joan Torpie
 Pauline Totten
 Ann Towers
 Transcultural Nursing Society
 Gayle Traver
 Donna Treat
 Patricia Trimble
 Alison Trinkoff
 Faith Tristan
 Jane Tuttle
 Upstate Special Risk Services
 Jean Upton
 Barbara Urich
 Tamara Urmev
 Elizabeth Vaczy
 Anne Valenza
 Brett Van Damme
 Harold Van Voorhis
 Kathleen Van Voorhis
 Sandra Vancamp
 Brigit Vangraafeiland
 Katherine Veals
 Arlene Venkatesh
 Beverly Verbridge
 Suzane Villarini
 Gloria Viverto
 Elanita Vogt
 Ardis Vokes
 Stephanie Von Bacho
 Kathryn Votava
 Mabel Wadsworth
 Anne Wagner
 Janet Wagner
 Edward Wall
 Ilene Wallmueller
 Nancy Wallo
 Ruth Warburton
 Christine Ward
 Carol Warmuth
 Deanna Warren
 Joan Warren
 Maureen Warren
 Shirley Warren
 Lucy Wasileski
 Patricia Wasserman
 Jane Watkin

Heather Watson
 Nancy Watson
 P. Keith Watson
 Judith Watt
 Mary Weber
 Gloria Webster
 Elizabeth Weingast
 Eleanor Weinstein
 Linda Weinstein
 Steven Weinstein
 Ann Weiss
 Ann Weitzel
 Patricia Welsh
 Eileen Westlake Lumb
 Delores Wetter
 Phyllis Wettermann
 Ruth Whitcomb
 Kathleen White
 Kathleen White-Ryan
 MaryPat Whitehead
 Fay Whitney
 Ralph Whitney
 Dorothy Whittingham
 Kathleen Wilkinson
 Lynda Willetts
 Catherine Williams
 Elizabeth Williams
 Marilyn Williams
 Mary Williams
 Joanne Williamson
 Patricia Williamson
 Donna Willome
 Carol Wilson
 Karen Wilson
 Marcia Wilson
 Melissa Wilson
 True Wilson
 Donna Winderl-Malyak
 Nancy Wink
 Diane Koegel Wintermeier
 Elizabeth Wisler
 Wendy Witterschein
 Patricia Witzel
 Mary Woiler
 Wolf Group New York Inc.
 Geraldine Wood
 Jean Wood
 Ardith Wylie
 Linda Yanklowski
 Marge York
 Kay Yost
 Gene Young
 Kathleen Young
 Sharon Louise Yousey
 Marilyn Yoxall
 Sharon Zache
 John Zarola
 Jayne Zinke
 Lori Zorc
 Elizabeth Zwerger

Eleanor Hall Bequest Society

The following are members of the Eleanor Hall Bequest Society. Members are individuals who have included the School of Nursing in their wills, or have established funds through one of the University's planned giving vehicles, such as a charitable gift annuity. In doing so, this group is thoughtfully planning to guarantee the future success of the School of Nursing, and their contributions will touch the lives of countless nursing students in the years ahead.

Drs. Rupert and Marian Brook
 Mr. Mercer Brugler
 Mrs. Esther Bumpus
 Mrs. Virginia K. Clark
 Mrs. Marion Cole
 Dr. William Crandall
 Mr. Russell and
 Mrs. Josephine Craytor
 Mr. William and Dr. Loretta Ford
 Mrs. Jane Gilman
 Miss Eleanor Hall
 Mr. David A. Haller, Jr.
 Dr. Cynthia Allen Hart
 Mrs. Helen Heller
 Dr. Jean Johnson
 Miss Laura Kellogg
 Dr. Evelyn Lutz
 Estate of Mr. Charles McClouth
 Mr. Donald McConville
 Dr. Margaret McCrory
 Miss Edna Muntz
 Mrs. Rowena Nadig
 Mrs. Faith Norton
 Dr. Kathleen Plum
 Mrs. Hazel Reveal
 Mrs. Andrea Bourquin Ryan
 Dr. Robert and Mrs. Janet Scala
 Mrs. Louise Smith
 Dr. Howard Spindler
 Mr. George S. Terry, Jr.
 Mrs. Jane Watkin
 Miss Carolyn Whitney
 Ms. J. Christine Wilson

Alumna Jane Watkin '45 Says Gift Annuity Is A Good Opportunity and An Easy Decision

By Christopher Raimy, Director of Development and Major Gifts for Nursing

“From my earliest memory I always knew I wanted to be a nurse,” says Jane Curtiss Watkin BS '44,'45 BS, RN, who this year decided to fund a Gift Annuity at the School of Nursing. She retired after working 40 years for Strong Memorial Hospital and the University of Rochester. Shortly after graduation, she contracted tuberculosis and after a two-year struggle back to health, she returned to the School of Nursing to work for Ms. Winona Abbott. Later she worked with Ms. Hanna Peterson in the Outpatient Department at Strong and eventually became Administrative Director of the Outpatient Department. She retired in 1985 and is enjoying sharing in the lives of her husband's five children, 12 grandchildren and three great-grandchildren. She and her husband Keith have been helping their family with education costs of their grandkids but they also believe strongly in supporting the U of R School of Nursing.



Jane Watkin (right) with Dean Patricia Chiverton



Jane Watkin, senior photo 1945

Jane funded a Gift Annuity at the School of Nursing and, at age 79, receives a guaranteed income of 8.6% in the form of quarterly payments from the University. During a visit with Dean Chiverton in August, Jane said, “I always felt I wanted to make an investment in the School that prepared me for a career I loved. I funded this gift with savings that were making less than 1% interest and some other funds that were performing very poorly after the downturn in the market. I felt I've wanted to invest in education and give back to the School of Nursing. With the market going down this seemed like a good opportunity. Besides, my mother lived to age 95 and I expect to live long enough to enjoy my annuity payments! This was really a very easy decision to make.” We welcome Jane as the newest member of the Eleanor Hall Society.

For more information and a personalized illustration contact:
The Office of Alumni Relations and Development or
Jack Kreckel
Office of Trusts and Estates
(800) 635-4672 (585) 273-5904
Kreckel@alumni.rochester.edu

Age	Fixed Rate for Life
60	6.4%
65	6.7%
70	7.2%
75	7.9%
80	8.9%
85	10.4%
90	12.0%

Rates for deferred payment gift annuities are higher.

A sample of Rochester's
Gift Annuity Rates
Through Dec. 31, 2002

Alumni live ‘la dolce vita’ during first international trip

By Christina Mancini
Associate Director of Medical Alumni Relations



Spectacular scenery. Wonderful friendships. History, art, culture galore. Amazing food and wine – all the ingredients for an enjoyable travel experience. The 19 alumni and friends who took the jaunt to Tuscany are likely to rave about this recipe for some time. It was the first international alumni trip sponsored by the URMCA Alumni Programs Office of Alumni Relations, and our time in Italia was “magnificato.”

For eight glorious days, we traversed the Tuscan countryside, traveling to Siena, Assisi, Perugia, Montepulciano, Florence and other beautiful destinations. We were fortunate enough to call Pienza our home away from home. This charming, sleepy town has a population of 400 and was named after former resident Pope Pius III. English is a language familiar to all but known to few here, so body language and smiles were the common denominator. A friendlier town could not be found. And the wine and cheese made in this area of Tuscany were delicious!

Although such entrees as “Wild Boar Stew” raised a few eyebrows, they were soon discovered to be a treat for the taste buds. Enticing entrees, delectable desserts, and wine, wine, wine were in order at every meal. Culinary delights were but one wonderful aspect of this trip. Seymour Schwartz, M.D. (R ’57), participated as the faculty enrichment lecturer. He gave several interesting lectures on map-making and on the history of surgery in Italy and the United States. While in Florence, our group had the opportunity to learn from his expert insight on Galileo’s globes.

We also visited a vineyard, cathedrals and basilicas, including the basilica in Siena, where we saw Catherine of Siena’s actual preserved head, skin and all. About half the group also took advantage of the optional side trip to Rome.

Alumni were from all three of the URMCA’s schools—medicine, dentistry and nursing. Friendships grew throughout the week, and a post-trip party was planned for mid-July before we even left Italy!

University of Rochester Medical Center Alumni Travel Programs

FRENCH RIVIERA ART TOUR
December 27, 2002-January
4, 2003

**ALUMNI COLLEGE IN IRELAND:
ENNIS**
May 21-29, 2003

TRIP TO SCANDINAVIA
August 2003

Watch your mail for more
information or contact the
Office of Medical Alumni
Relations
at (800) 333-4428.



About us ...

Rochester Nursing Today

Rochester Nursing Today is a bi-annual publication of the University of Rochester School of Nursing in conjunction with the University of Rochester Medical Center Department of Nursing Alumni Relations and Development and the Department of Public Relations.

Editors

Lori Barrette
Andrea Marshall

Contributors

Patricia Chiverton
Karin Gaffney
Andrea Marshall
Christopher Raimy

Photography

Vince Sullivan
Randy Tagg

Design

Lisa Bodenstedt

Comments

We welcome comments from our readers. All mail should be sent to:
Andrea Marshall,
Associate Director of Alumni Relations & Development
300 East River Road
PO Box 278996
Rochester, NY 14627-8996

Email

Rochester Nursing Today @
urmc.rochester.edu

Phone

(585) 273-3173

Visit the School of Nursing web site

www.urmc.rochester.edu/son

University of Rochester Medical Center Development Alumni Office

Andrew M. Deubler
Associate Vice President for
Medical Center Development

Christopher B. Raimy
Director of Development for
Medical Center Alumni Programs

Andrea M. Marshall
Associate Director of Alumni
Relations and Development
School of Nursing

School of Nursing Rochester Alumni Council

Carol Brink '56 BS, '62 BS
Mary Sue Jack, '80 FLW, '85 PhD
Elizabeth Kellogg Walker '62 BS,
'73 MS, '81 MA,
'86 PhD, College:
Arts & Sciences
Andrea Marshall, Associate
Director of Alumni
Relations & Development
Christopher Raimy, Director of
Development for Medical
Alumni Programs

School of Nursing Dean's Advisory Board

Elizabeth Wetterings Smith,
B '50,
Junko Mohri Mills,
MS '98, PhD '00
Lisa H. Norsen,
BS '77, MS '83
Richard J. Collins, MD '47
Marilyn S. Fiske, B '67
Loretta C. Ford, EdD, HNR '00
Carolyn Taksen Friendlander,
PNP '68
Patricia High Gorzka, PhD, B '61
Elaine C. Hubbard, EdD
Mary Moore Insel, MAS '81
Jean E. Johnson, PhD
Albert H. Pinsky
Karen Webb Sutherland, B '61
Fay Wadsworth Whitney,
PhD, BS '61

On the cover

Nancy Watson, PhD, RN, director of the Center for Clinical Research on Aging, visits a nursing home resident.

Photo by Elizabeth Lamark.

What's happening?

Please send us information about your career advancements, papers, honors received, appointments, further information and family updates. We'll include your news in the Alumni Class Notes section as space allows. Indicate names, dates and locations. Photos are welcome and may be used as space permits. Please print clearly.

Name

Degree / Year of Graduation

Home Address

Home Telephone

Business Address

Business Telephone

E-mail address

Position(s)

News

Please return to

Rochester Nursing Today
Andrea Marshall
Associate Director of Alumni Relations & Development
University of Rochester School of Nursing
300 East River Road
PO Box 278996
Rochester, NY 14627-8996

Rochester Nursing Today @ urmc.rochester.edu

UNIVERSITY OF
ROCHESTER
MEDICAL CENTER

601 Elmwood Ave., Box SON
Rochester, NY 14642

Non-profit
US Postage
PAID
Permit No. 780
Rochester, NY

