



SCHOOL OF  
**NURSING**  
UNIVERSITY of ROCHESTER  
MEDICAL CENTER

WINTER / SPRING 2009

# ROCHESTER NURSING

NEWS FOR ALUMNI AND FRIENDS

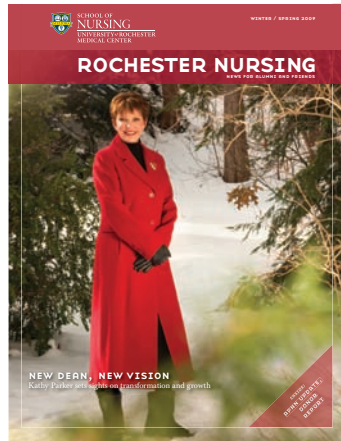


## **NEW DEAN, NEW VISION**

Kathy Parker sets sights on transformation and growth

INSIDE:  
APNN UPDATE,  
DONOR  
REPORT

## ABOUT ROCHESTER NURSING



### ROCHESTER NURSING

Winter/Spring 2009

Cover photo: Antonio Barbagallo, fotoab.com

On the cover: Dean Kathy Parker enjoying the snow at Highland Park's Warner Castle.

### University of Rochester School of Nursing

#### Dean

Kathy P. Parker, PhD, RN, FAAN

### University of Rochester Medical Center

Chad M. Gobel

*Associate Vice President  
for Advancement*

*University of Rochester Medical Center*

Teri D'Agostino

*Associate Vice President  
Public Relations and Communications  
University of Rochester Medical Center*

Mary Ann Dever

*Executive Director  
Office of Advancement  
University of Rochester Medical Center*

Dianne Moll

*Associate Director for Advancement  
School of Nursing*

Susan Fandel

*Senior Public Relations Associate  
School of Nursing*

### **Rochester Nursing**

*Rochester Nursing* is a biannual publication of the University of Rochester School of Nursing in conjunction with the University of Rochester Medical Center Departments of Nursing Alumni Relations and Development and Public Relations and Communications.

#### **Editor**

Susan Fandel

#### **Contributors**

Lori Barrette, Karin Christensen  
and Dianne Moll

#### **Art Director/Designer**

Kathleen Mannix

#### **Feature Photography**

Richard Baker  
Antonio Barbagallo  
Ken Huth  
Vince Sullivan

#### **Comments**

We welcome comments from our readers. All mail should be sent to:  
Alumni and Advancement Center  
School of Nursing  
300 East River Road  
P.O. Box 278996  
Rochester, NY 14627-8996

#### **E-mail**

sonalumni@admin.rochester.edu

#### **Phone**

(585) 273-5075 or (800) 333-4428

#### **Web site**

www.urmc.rochester.edu/son

### UPDATE US!

Send news on your career, advancement, honors and family. Please include pertinent information as well as class year and degree and a way to reach you with questions. E-mail us at: [sonalumni@admin.rochester.edu](mailto:sonalumni@admin.rochester.edu)

Rochester Nursing  
Alumni and  
Advancement Center  
School of Nursing  
300 East River Road  
P.O. Box 278996  
Rochester, NY 14627-8996



## Inside:

---

2.....Message from Dean Parker

### Features: New Dean, New Goals

3.....Profile: Kathy P. Parker

6.....APNN: Growth and Change Continue

9.....PNPs: Training in the Community

### Departments

10.....School and Faculty News

18.....Report on Giving

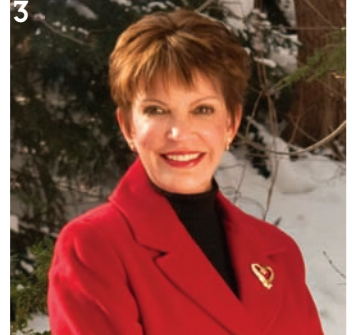
*July 1, 2007 – June 30, 2008*

28.....Planned Giving

### Happenings

15.....Alumni Reunion 2008

17.....Scholarships for Students: One Family's Gift



## MESSAGE FROM THE DEAN



I recently came across a 1932 copy of *The SONUOR*, the University of Rochester School of Nursing class yearbook. While flipping through the pages, I first noticed the contrasts between past and present represented in the pictures and text. This glimpse into history caused me to reflect on how nursing and society had changed. Upon further examination, however, it occurred to me that there were many more substantive similarities than differences across time reflected in this beautiful and now historical work.

The photographs do suggest a different time — for example, one must note the starched white uniforms and nurses' caps portrayed. There were advertisements placed by such Rochester businesses as the Menihan Arch-Aide Shoes for Women, Lincoln-Alliance Bank and Trust Company, Davis & Geck, Inc., which sold surgical sutures, Plymouth Dairy, and Clara Barton Nurses' Uniforms and Capes. Students and faculty could purchase uniforms from Clara Barton Nurses' Uniforms and Capes for \$2.99 to \$3.99 and then have them pressed in Helen Wood Hall for 10 cents. Some things have certainly changed!

But there were many more consistencies, which linked the past to the present. For example, the fundamental underpinnings of economic stability were being shaken in 1932 — as they seem to be now. During this time, as today, the students, faculty and alumni of the School of Nursing demonstrated optimism and a commitment to learning. These attributes were reflected in the cheerful demeanor that can be seen in the photographs and such prose as the "Nursing Commandments," which included such sage advice as "Thou shalt be in thy room at 10 with thy lights out at 10:30," "One late leave a week thou shalt have till 12 and do not be tempted to ask for another," and "Remember thy technique and do not break it, lest it be counted against thee in general proficiency." There were descriptions of the experiences of patients, students, faculty and alumni that could have come from those in the present. Students were challenged by both the science underlying their profession and the humanity of those they served, as they are today. A poem titled "A Nurse's Prayer" asked for guidance and strength. Humor abounded, and ranged from reports of the stress associated with missing a phone call from a beau to meditations on a fly flitting through the operating room, to a poem titled "On Being X-Rayed," which detailed the experience of being looked at "through and through."

I was also struck by the steadfastness and pursuit of excellence that were described, and marked that these were indeed characteristics of the faculty, students and alumni of the present. Helen Wood Hall looked a great deal the same in those days as it does today. Some things haven't changed.

Particularly poignant was an essay titled "Class History," which read "And then there is the history. We started making ours when we were but preliminaries with shadowy hope of attaining seniorship . . . Time went on and we came to feel that we were part and parcel of the institution." I identify with this sentiment. Having been the dean of this wonderful School of Nursing for just six months, I already feel part of its fabric and indelibly linked to its past, present and future.

Upon closing *The SONUOR*, I noticed a picture of Helen Wood on the first page. Beneath it was written "Time and Distance Bind Us Closer." How true, I thought.

I look forward to leading the School along with the students, faculty and alumni — building on its tremendous history, strengthening what makes us great today and helping to shape a bright future.

Sincerely,

A handwritten signature in black ink that reads "Kathy P. Parker". The signature is written in a cursive, flowing style.

Kathy P. Parker, PhD, RN, FAAN  
Dean and Professor  
University of Rochester School of Nursing

## PROFILE: KATHY P. PARKER

FOURTH DEAN EMBRACES NEW OPPORTUNITIES

**"I want to maximize our potential and I'm going to count on the dedication of faculty, alumni and students to do that."**  
— *Dean Kathy Parker*

*Dean Kathy Parker represents the School of Nursing as an active member of the Medical Center Executive Team.*

Since **Kathy P. Parker, PhD, RN, FAAN**, became dean of the University of Rochester School of Nursing in August 2008, she's fielded many questions. They've ranged from inquiries about her vision for the School and her strategic plan to questions about how she will increase enrollment and grow programs during a difficult economic period. But the single most frequent thing she has been asked has been: "How do you like the snow?"

To be sure, it's reasonable to expect that a newcomer to Western New York might be taken aback by the sheer volume of snow seen here each winter. But Parker wants to make it very clear that although she lived in sunny, virtually snow-free Georgia for 35 years prior to her move here, she loves every last flake. "I have collected snow globes for

years," she said. "Now I tell people that I get to live in one. The night before my interview in February 2008, I sat in my hotel room in the dark and watched the snow fall outside. I think I fell in love with it right then."

Despite a few months of near constant snow and below average temperatures, Parker remains enamored of Rochester. She's discovered many reasons to be glad she relocated to the area. Among her personal top 10 are: short commute times, the abundance of lilacs – her favorite flower, and, most importantly, the opportunity to chart a new course for the School of Nursing.

Before coming to Rochester, Parker served as the Edith F. Honeycutt Professor of Nursing in the Department of Family and Community Nursing at Emory University's Nell Hodgson Woodruff School

of Nursing in Atlanta. With more than 30 years of clinical practice experience, she is certified as both an adult nurse practitioner and a medical/surgical clinical nurse specialist. She is also nationally recognized for her research in sleep disorders and has served as co-director of Emory's Program in Sleep. The breadth of her experiences makes her uniquely qualified to lead as the School's fourth dean, a job she immediately tackled with enthusiasm and determination.

"I hope to be a very good steward and bring attention to the excellence that already exists. There are so many strengths here for us to build on," said Parker. "I want to maximize our potential and I'm going to count on the dedication of faculty and alumni to do that. I also expect our incredible students will play a key role."





*When naming the strengths that will be key to the School's future success, Parker always cites the students. She has made it a priority to work with them.*

Parker's vision for the School focuses on the missions that have always shaped the institution: education, research and practice. Her strategic goals for each of these areas are ambitious, with an eye to transforming nursing over the next five to 10 years.

Growing student enrollment is one of the new dean's top priorities. She plans to double the accelerated programs for non-nurses as well as the master's programs by 2018. She'd also like to see substantial increases in the number of students in the

doctoral and postdoctoral programs.

"The nursing shortage isn't going to go away," said Parker. "We also face a nursing faculty shortage. My hope is that reaching our strategic goals will address both of those issues."

To facilitate growth of the magnitude Parker plans, she has established equally aggressive faculty recruitment goals for the same time period. Those faculty positions will include clinical as well as research positions. Not only will this allow the academic programs to flourish, but

Parker also believes it will advance the School's efforts to increase its research base.

When it comes to the clinical mission, Parker is confident that under her direction the School will continue to lead the nation in transforming nursing practice. Her plans include working with the University of Rochester Medical Center (URMC) to improve outcomes as they relate to patient safety, satisfaction and quality of care. Parker would also like to foster increased emphasis on nurse leadership.

"On the front lines each

day, nurses garner ideas and insights that are invaluable," said **Bradford C. Berk, MD, PhD**, senior vice president for health sciences and CEO of URMC. "These observations should be heard and considered as both policy and practice evolve. I am confident that Kathy's administration will encourage nurses to seek out opportunities to contribute and lead."

On a personal level, Parker is looking forward to her unique opportunity to shape the future one person at a time. "The development of people is very exciting

to me,” she said. “Whether they are patients, students, faculty or colleagues, their development is much more important than anything I could achieve alone.”

This comes as no surprise to Parker’s former colleague, Donald L. Bliwise, PhD, professor of neurology, psychiatry/behavioral sciences and of nursing at Emory, and director of Emory’s Program in Sleep. “She is a wonderful person, gracious, kind, empathetic and very sharp,” said Bliwise. “I have known several dozen academics in schools of nursing over the last 25 years, and I can honestly tell you that I have known none brighter. We were sorry to see Kathy leave, but pleased to think that she moved to a role of continued growth for her, in which she can develop junior faculty, teach, and bring a wealth of experience and critical thinking.”

Parker’s research success can be attributed to that combination of clinical experience and critical thinking. Focused on how sleep and waking are disturbed in patients with chronic illnesses, she also looks at developing population-specific treatments. Improving quality of life by improving quality of sleep is Parker’s passion. Her impact on her patients’ lives has been substantial.

“I first became interested in sleep when I was a nurse

practitioner caring for patients with end-stage renal disease,” she said.

“I could manage many things with them, but not sleep. So I decided to study the problem and see if I could find a solution.”

And she did. Parker’s investigations led to the discovery that lowering the temperature of the dialysis bath used during hemodialysis helped patients sleep better. Simply dialing down the temperature proved to be a cost-effective, nonpharmacologic intervention and an example of translation research at its finest.

As Parker moves the School forward, she does so with a deep awareness and appreciation of its history and those who spent decades writing it. She has made it a priority to meet with previous deans and directors during her first six months in the position. “I am part of an amazing chain connecting the past, the present and the future,” she said. “I embrace that.”

Parker’s sense of the past may be spot-on and her vision for the future may be clear, but the road ahead promises to be a challenging one due largely to economic conditions that are already affecting schools nationwide. “Financial concerns certainly loom,” said Parker. “Not just for the School but for students who are seeing funding opportunities diminishing or, in some

cases, disappearing altogether.”

In response, Parker has pledged funding from her dean’s start-up package to support scholarships for students in programs she has identified as key parts of her strategic plan. The PhD program, for example, has increased the stipend it offers. Qualified full-time students beginning their first year of study in fall 2009 can receive \$25,000 per year for up to four years. The previous stipend was \$8,700 per year.

Parker hopes to strengthen the School’s overall financial viability by creating alternative sources of revenue. On tap are increased entrepreneurial activities, the development of more extensive distance learning programs, and the protection of intellectual property produced by research faculty.

To be sure, Parker’s work is cut out for her. But she is confident about her ability to lead and foster positive change.

“To me, nursing is at its heart transformative,” she said. “There are infinite opportunities to change lives through education, through research, through practice. There are endless chances to change your own life when you’re a nurse. This profession continues to transform me after all of these years.” **RN**

## A PERSONAL LOOK AT KATHY PARKER

**Born:** Michigan

**Education:** BSN from Columbia University, MN from Emory University, PhD in nursing from Georgia State University. She also holds a certificate from the University of Paris – Sorbonne.

**Family:** Husband: Louis, an attorney; two daughters: Cynthia Lynn, an attorney, and Kathryn Louise, in her second year of medical school at New York University.

**Got her start:** In kindergarten, Parker developed a kidney infection. The kindness of the nurse caring for her made a deep impact, and nursing became her profession of choice at the age of 5.

### What she misses about

**Atlanta:** The daughter who still resides there. Her other daughter lives in New York City. She misses her as well.

**Putting down roots:** Parker and her husband recently moved into the former Eisenhart Estate on East Avenue in Rochester. Once owned by the University of Rochester, it had been home to an Eastman School of Music dean and a chairman of the Board of Trustees.

### Science is in her blood:

Parker’s father was a chemical engineer. His daughter knew the periodic table of elements before she entered kindergarten.

## APNN CONTINUE TO GROW AND RESPOND TO STUDENT NEEDS



Since its inception in 2002, the University of Rochester School of Nursing's Accelerated Baccalaureate and Master's Programs for Non-Nurses (APNN) has grown tremendously. The accelerated programs, which build upon students' existing degrees by providing generalist nursing studies that qualify students for their nursing licensing exams, enrolled 23 full-time and 10 part-time students in May 2002. One hundred and four students selected from an applicant pool of 321 will begin class in May 2009.

It's a safe bet that rate of growth and level of interest will continue given the nation's economic conditions. A profession that will need workers for years to come will appeal to individuals in search of new careers and those eager for job stability and personal satisfaction.

**Kathy P. Parker, PhD, RN, FAAN**, dean, has set a

goal of doubling the APNN's enrollment in five years. That will mean increasing faculty, raising the visibility of the well-respected program, and securing more funding sources for incoming students. "The APNN is one of the finest programs of its kind in the country," said Parker. "It is vitally important that we work toward alleviating the nation's nursing shortage by expanding the number of people who are prepared not only to pass the licensing exams when they finish here, but also are able to care for patients with competence, confidence and compassion."

Ensuring that happens are the program's two co-directors: **Rita D'Aoust, PhD, ACNP, ANP, CNE**, assistant professor of clinical nursing, and **Elaine M. Andolina, MS, RN**, director of admissions. Over the years, the two have revised the program in response to the ever-evolving nature of nursing and health care as well as student feedback.

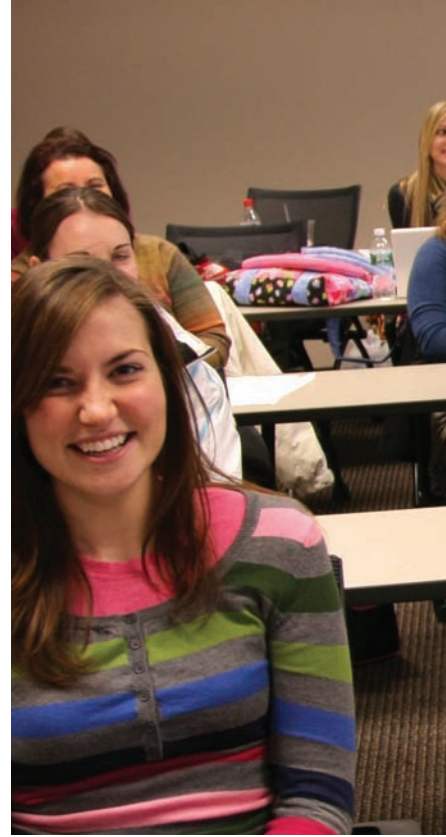
"Every year our curriculum changes," said D'Aoust. "People say, 'Does that mean you didn't have it right before?' No. But you have to continually refine the program. Listen to the students, to the advisory board, look at the profession. You can always make it better."

Recent changes include the move to expand the one-credit "Nursing Integration" course into a four-credit course, "Nursing Integration and Transition to Practice."

"We realized we didn't have an adequate mastery of learning course, so we stepped back and developed a comprehensive synthesis and application course at the end of the program," said D'Aoust. "In this way we incorporate essential nursing concepts and content with a focused clinical practicum and critical-care simulations for likely scenarios that a graduate nurse is likely to encounter in the first year of practice."

In addition to the theory portion that previously existed – "Knowledge Synthesis" – additional content and credit is gained in "Transition to Practice," which provides a look at the practical side of being a nurse.

The new one-credit "Capstone Clinical" component sees students spending 88 of 112 clinical hours working one on one with nurse preceptors at Strong Memorial Hospital and Highland Hospital. More than 100 working nurses have committed to participating in the program. "The component provides students with a unique opportunity to follow that one nurse. They will



learn from them how to handle multiple patients, and how to prioritize decision-making," said Andolina.

The final piece of this expanded four-part course is the one-credit "Critical Care Simulation." Using the School of Nursing's high-fidelity computerized patient simulators, students can learn to respond to common events such as respiratory distress, septic shock, or cardiac arrhythmia.

The School's efforts to craft a program that answers the nation's call for





qualified nurses seem to be working. To meet demand, an additional 40 students will be admitted in January 2010, in addition to the class beginning in May 2009.

### **Finding Ways to Support Nursing Education**

While interest in the School of Nursing's accelerated programs is growing, so is the need for financial support. Many students can't enroll because they already have a college degree, which disqualifies them for receiving most financial aid

programs for entry-level students.

Over the years, APNN students have benefited from the Helene Fuld Health Trust, HSBC Bank USA, Trustee, the nation's largest private funder devoted exclusively to nursing education. But outside funding is becoming increasingly competitive and some current grants are set to expire in May which, unfortunately, coincides with reductions in tuition assistance dollars available through certain New York State programs.

Recent financial support did come in September 2008, when the School of Nursing was selected as one of the first institutions in the nation to receive funding through the competitive Robert Wood Johnson Foundation New Careers in Nursing Scholarship Program. This grant money – \$150,000 – will provide \$10,000 scholarships to 15 entry-level nursing students during the 2009-2010 academic year.

While the RWJF scholarships will assist some, others will need to keep

looking for ways to fund their educations. In fact, students consistently identify scholarship support as the single most important factor in their ability to pursue an accelerated nursing degree.

"The need for student support can't be stressed enough," said Dean Parker. "Without it, students who have the talent, desire and compassion to become nurses may never have the opportunity." **RN**

APNN STUDENT STORIES



*Robinson*

*The best way to show the impact of the APNN is through the students. Here we profile three graduates.*

In January 2009, **Jobena Robinson, RN, BS** (pictured above), a graduate of the APNN, was named program coordinator of the Nurse-Family Partnership program run by the Monroe County Department of Public Health. The evidence-based, community health program that she oversees partners low-income, first-time mothers with specially trained registered nurses who conduct home visits until the child is 2 years old. The nurses work with mothers to improve pregnancy outcomes, positively impact child health and development, and promote economic self-sufficiency.

Working with families is a “dream come true” for Robinson, who at some points seemed unlikely to be able to finish the program because of financial strains. “Jobena tells the classic story of every accelerated student,” said



*Pollocks*

**Rita D’Aoust, PhD, ACNP, ANP, CNE**, assistant professor of clinical nursing and APNN co-director. “These students have the potential and the drive but they need financial support and mentorship. We need smart people like Jobena in the program. We need to find ways to help them make it through.”

With support from the Fuld Trust and a job working as a research assistant, Robinson found the money – and guidance – to finish her studies, graduating summa cum laude. “If it hadn’t been for the support I received,” she said, “I never would have made it.”

**Lonnie Pollocks, RN, BS** (above, center), had an interest in science early on, earning his associate’s degree in biomedical engineering technology in 1980. Pollocks went on to work at Highland Hospital, Kodak, General Railway Signal, General Motors and Xerox, where he would spend 10 years. During this time, he earned degrees in applied computing and software



*Santiago*

development. But he also took a couple of nursing classes.

Laid off in 2003, Pollocks decided to pursue nursing full time. He enrolled in the APNN in 2004. “It was the right fit for me,” said Pollocks. “I had a family I needed to support as quickly as possible.”

The intense one-year program proved to be a challenge even for Pollocks, who thought his background might make things easier. “It was more difficult than anything I had gone through before,” he said.

A clinical turn in the neurosurgery unit in Strong Memorial Hospital helped Pollocks decide that was where he wanted to be after graduation, though he admits he may check out other areas of nursing down the road.

Wherever he goes next, Pollocks said he is well prepared and credits the School of Nursing for that. “We were given so much knowledge and such excellent training that we can hit the ground running anywhere we go,” he said.

Thoughtfully and deliberately describes how **Aida Santiago, RN, BS** (pictured at left), came to be a nurse.

Always interested in the science field, Santiago completed two years of premed before finishing studies in business and marketing. In 1998, she left her job with Merck & Co., Inc., to stay home following the birth of her second child. When considering a return to work, she found herself drawn back to medicine and nursing. She checked out local programs but decided the traditional route wasn’t for her. Then she found the School of Nursing and the APNN, and she was sold. “I knew it right away,” she said.

Once accepted, Santiago deferred school for a year until her son started kindergarten. When she did move forward as a part-time student, she began the task of balancing marriage, motherhood and school. “I don’t think I have ever worked harder or slept less in my life,” said the Fuld scholar. “But I never felt alone or as if I couldn’t do it. There was support from everywhere.”

Following graduation in May 2008, Santiago took a position in neuromedicine at Strong Memorial Hospital. “I took my time picking a unit,” she said. “I thought I wanted to be a cardiac nurse, but after a clinical stint in neurology, I was bitten by the neuron bug. This area is my passion.” **RN**

## PROGRAM SHOWS STUDENTS ROLE AND IMPACT OF COMMUNITY GROUPS

Participating in Pediatric Links with the Community (PLC) as a student, **Meghan Aldrich, RN-BC, MS**, discovered it was more than a requirement – it was a gift. Now, as a clinical nurse specialist, she finds her experiences in the community serve her well on the job.

PLC, started by **Jeffrey Kaczorowski, MD**, and **Laura Jean Shipley, MD**, in 1996, teaches pediatricians-in-training how to partner with community-based organizations (CBO) to provide care for children and families at risk due to economic and social conditions.

“The question eventually came up: Why aren’t we training pediatric nurse practitioners [PNP] in the same way as the pediatric residents so they can lead together to improve care?” said **Sue Bezek, PNP-BC**, assistant director of the Sovie Center for Pediatrics at Golisano Children’s Hospital at Strong. She and **Pamela Herendeen, MS, RN, PNP**, senior associate and specialty program director of the Care of Children and Family Nurse Practitioner program at the School of Nursing, wrote a grant for funding – which they received – from the Halcyon Hill Foundation.

In 2005, PLC expanded



*Pediatric nurse practitioner Meghan Aldrich (shown second from right with her coworkers) found that her experience with Pediatric Links with the Community provided a new perspective on her patients as well as the organizations in Rochester that serve at-risk populations.*

to include PNP students. Approximately 20 School of Nursing students have completed the program, which requires 16 clinical hours in each of two semesters across a sampling of 10 to 15 different placements, providing exposure to the impact of poverty on children. One day may involve teaching dental health at ABC Head Start; another may feature a lecture on dating violence.

“We really have a lot we want students to learn from this,” said Bezek. “The experience should allow students to move beyond the ‘snapshots’ of

patients that they see within the context of a clinic visit and enable them to expand to a broader picture of how the individual patients and families fit into the community, as well as what resources the community has to offer them.”

All of that was imparted to Aldrich, a 2008 graduate who works as a clinical nurse specialist in the Pediatric Surgical Suite at Strong Memorial Hospital.

During one of her shifts, Aldrich encountered a patient she had met at one of the CBOs. “I realized that this is a person who has a life and a personal experience beyond the

time I might see them in a hospital,” she said.

Aldrich benefited in other ways. She said she is better equipped to share knowledge of CBOs that might be appropriate when a patient asks for resources. Also, she said she is more appreciative of the effort that CBOs put into serving populations in need.

PLC funding for PNPs ends in May 2009. Bezek and Herendeen are working to obtain funds to continue it seamlessly. “Students have told us that PLC really enriches the education we provide and makes nurse practitioners better prepared to do their jobs,” said Bezek.

RN

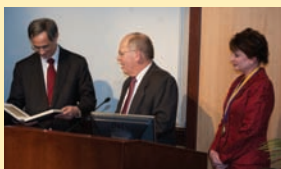
### INVESTITURE CEREMONY CELEBRATES NEW SCHOOL OF NURSING DEAN

Faculty, staff and students converged on the Loretta C. Ford Education Wing Auditorium Dec. 8, 2008, to celebrate the investiture of **Kathy P. Parker, PhD, RN, FAAN**, as the fourth dean of the University of Rochester School of Nursing.

**Bradford C. Berk, MD, PhD**, senior vice president for health sciences and CEO of the University of Rochester Medical Center, presided over the investiture ceremony. Other speakers included **Joel Seligman**, president of the University of Rochester, **Ralph W. Kuncl, PhD, MD**, provost and executive vice president of the University, **Edmund A. Hajim, '58** chairman of the University's Board of Trustees, and **Robert H. Hurlbut**, past chairman of the University of Rochester Medical Center Board and a member of the University of Rochester Board of Trustees.



Top row left: Dean Kathy P. Parker was joined by her family. From left, daughter Cynthia Lynn, husband Louis and daughter Kathryn Louise. Top row right: Kathy P. Parker and Bradford C. Berk. Middle row: From left, Ralph W. Kuncl, Bradford C. Berk, Edmund A. Hajim, Dean Parker and Joel Seligman. At left: Elaine C. Hubbard congratulates Dean Parker.



Before the close of Dean Kathy Parker's investiture ceremony, she and her husband, Louis — an avid collector — presented a special gift to Joel Seligman, president of the University of Rochester: *The Narrative of the Life of Frederick Douglass*. A surprised and pleased Seligman accepted the first edition of Douglass' first volume of his autobiography on behalf of the University of Rochester. Also presented was an original Douglass letter found inside the book. Both pieces have joined other Frederick Douglass materials held in the collections of the University's libraries.

"This is a generous and much appreciated gift, which will significantly add to the strength of our Douglass collection," said Richard Peek, director of Rare Books, Special Collections and Preservation for the University of Rochester.

1856 Rochester  
James W. Stone, Esq.

Dear Sir, Excuse the delay I have been on the stump and have had no time for correspondence. I am sorry you have given up your contemplative lectures in Boston.

But no harm done.

Yours truly, Fred. Douglass





*Hajim*

### CHAIRMAN OF THE BOARD VISITS THE SCHOOL OF NURSING

The University of Rochester School of Nursing was pleased to welcome **Edmund A. Hajim, '58**, chairman of the board of trustees and a graduate of the University, to Helen Wood Hall in November 2008. **Kathy P. Parker, PhD, RN, FAAN**, dean of the School of Nursing, gave Hajim a tour of the School's facilities and introduced him to many of Helen Wood Hall's residents.

"Ed Hajim is extremely interested in the School of Nursing," said Parker. "He and I had a wonderful conversation about the future of the School and how he could help us achieve our mission. He particularly enjoyed taking a tour and having a chance to meet some of the faculty and students. We are very fortunate to have such an enthusiastic, energetic individual as chairman of the board."



*Wilde*

### SCHOOL OF NURSING RESEARCHER RECEIVES NINR GRANT

**Mary H. Wilde, RN, PhD**, associate professor, received a four-year \$1.7 million grant from the National Institute of Nursing Research in September 2008 to study self-management of urine flow in people with long-term urinary catheters.

Urinary catheter users commonly experience adverse health effects, such as urinary tract infection, blockage, dislodgement and leakage. These problems often require attention that results in increased health care costs. Self-management of urine flow is an essential part of self-care for people with long-term urinary catheters, and may lead to decreases in catheter-related complications and enhanced quality of life.

"Despite its importance, no research has been conducted to formulate models of urine flow self-management and its relationship to catheter-related adverse health outcome, and no studies have assessed the



*Watson*

effectiveness of interventions to improve catheter self-management," said Wilde.

The study will enroll 220 participants and involve home visits and a follow-up telephone call. Catheter users will learn how to increase awareness and self-monitoring of their own patterns of urine flow and modify self-management behavior as needed.

The study will be conducted at the University of Rochester Medical Center and the Visiting Nurse Service of New York (New York City). If shown to be effective, the intervention will provide a much-needed prevention tool in self-care by people with long-term urinary catheters and one that can be easily scaled and implemented in a variety of care settings.

Wilde's co-investigator on the study is **James McMahan, PhD**, assistant professor at the School of Nursing.

### RESEARCHER HONORED FOR EXCELLENCE IN GERIATRIC NURSING

A nationally known School of Nursing researcher received a 2008 Excellence in Gerontological Nursing Education award from the American Association of Colleges of Nursing (AACN), in collaboration with the John A. Hartford Foundation Institute for Geriatric Nursing and New York University.

**Nancy Watson, RN, PhD**, who founded the Center for Aging Research now called the Elaine C. Hubbard Center for Nursing Research on Aging, received the Geriatric Nursing Faculty Champion Award. The honor recognizes Watson's expertise in geriatric nursing practice, her ability to lead curricular innovation and her long-time efforts to encourage students to pursue careers working with the elderly.

**Margaret Lash, RN, MS, ANP**, instructor in clinical nursing, nominated Watson for the honor. "She is widely respected for her work and recognized as one of our leading experts in geriatric care. Yet she is humble and approachable," wrote Lash in her nomination letter. "She has an instant rapport with the elderly as well as her students, and both have benefited from her wisdom, guidance and patience. The yardstick with which she measures her career is the question she often asks, 'Do you think we are making a difference?'"

*continued on page 12*



Xue

*continued from page 11*

Watson, a graduate of the University of Rochester School of Nursing, has a background in health services research and epidemiology. Her research focuses on the care of nursing home residents. Most recently, she conducted a multi-site study of end-of-life care of nursing home residents with dementia.

#### **FACULTY MEMBER NAMED A ROBERT WOOD JOHNSON FOUNDATION NURSE FACULTY SCHOLAR**

**Ying Xue, DNSc, RN,** assistant professor, was one of 15 junior faculty nationwide to receive an inaugural Robert Wood Johnson Foundation Nurse Faculty Scholar (NFS) award.

The three-year \$350,000 grant, which began in September 2008, supports Xue's research to examine national employment patterns of supplemental nurses (SRNs) in the United States from 1984 to 2004, one of the keys to understanding how to meet the nursing shortage and further examine the impact of hospital supplemental nurse staffing on

quality of care and cost in an acute-care setting.

"The United States is in the midst of a nursing shortage, which is expected to intensify as baby boomers age and the need for health care grows," said Xue. "Many hospitals use SRNs hired from staffing agencies to compensate for their nurse shortage, but evidence is limited on the trends in employment patterns of SRNs and their impact on quality of care and cost. This research will have implications for nurse staffing, for policy development, and for shaping future research to expand knowledge about SRNs."

In 2007, her first year on the University of Rochester faculty, Xue was awarded a \$300,000 grant from the Robert Wood Johnson Foundation's Interdisciplinary Nursing Quality Research Initiative to study the use of SRNs by hospitals and its impact on quality of care and cost, the first study to explore both outcomes and costs related to the use of SRNs in a hospital setting. The interdisciplinary team sought to understand the use of SRNs, including economic consequences, and examine the relationship between use of SRNs and patient outcomes and voluntary nurse turnover. Xue's research under NFS will build on this initiative.

The goal of the Robert Wood Johnson Foundation Nurse Faculty Scholars program is to develop the next generation of national leaders in academic nursing through career development



Athilingam

awards for outstanding junior nursing faculty.

#### **HEART FAILURE WORK EARNS HFSA AWARD FOR SCHOOL OF NURSING RESEARCHER**

**Ponrathi Athilingam, PhD, ACNP,** assistant professor of clinical nursing, was awarded the Heart Failure Society of America Nursing Investigator Award at the organization's annual scientific meeting in Toronto in September 2008.

Athilingam was one of five finalists chosen to compete for the award. A nurse practitioner with the University of Rochester Medical Center's Program in Heart Failure and Transplantation, she presented her dissertation research titled "Montreal Cognitive Assessment May Be an Appropriate Tool to Assess Cognitive Dysfunction in Heart Failure," for which she is proposing a longitudinal study to expand the research.

"Pon is an amazingly dedicated nurse practitioner," said **Leway Chen, MD, MPH,** director of the Program in Heart



Morrison-Beedy

Failure and Transplantation, who works closely with Athilingam.

"She was able to design, complete and analyze her study in a very short period of time. She is tireless, working full time on the heart failure and transplantation unit, teaching full time at the School of Nursing and conducting research. I foresee a tremendous academic career in her future."

Athilingam was the first student to graduate from the School of Nursing's accelerated MS-PhD program.

#### **HIV PREVENTION RESEARCHER INDUCTED INTO ACADEMY OF NURSING**

**Dianne C. Morrison-Beedy, PhD, WHNP-BC, FNAP, FAAN,** professor and assistant dean for research, was inducted into the American Academy of Nursing in November 2008.

Chosen by the academy's 15-member fellow selection committee for her outstanding achievements in the nursing profession, Morrison-Beedy is known for her research in HIV

awareness and prevention. In 2004, she launched the Health Improvement Project for Teens (HIP Teens) – a small-group intervention with girls ages 15 to 19 – when she observed a lack of services specifically for that population. The community-based research program works with adolescent girls from Rochester and surrounding towns to reduce girls' risk and improve their knowledge, motivation and behavior skills.

Morrison-Beedy is also co-director of the Clinical Core at the University of Rochester's Developmental Center for AIDS Research, which seeks to raise the overall quality and quantity of HIV/AIDS research.

The American Academy of Nursing's approximately 1,500 fellows are all nursing leaders in education, management, practice and research.

Morrison-Beedy received the Excellence in HIV Prevention Award from the Association for Nurses in AIDS Care in 2005 and the Distinguished Nurse Researcher Award from the New York State Nurses Association in 2004 for her work with HIV in adolescent girls. She received her doctorate from the University of Rochester in 1993.

#### **SCHOOL OF NURSING PROFESSOR VISITS THAILAND AS FULBRIGHT SPECIALIST**

**Jeanne T. Grace, PhD, RN, WHNP**, professor emerita of clinical nursing, spent six weeks in



*Grace*

Thailand this winter as a Fulbright Senior Specialist lecturing at Mahidol University.

Grace taught evidence-based practice skills to 180 nursing faculty, speaking to both graduate and undergraduate nursing students, and consulted with those working to establish a center of excellence for evidence-based practice at Mahidol.

"Like physicians, nurse educators must assure that our students become lifelong seekers and users of trustworthy information that guides effective practice," said Grace. "One of the things that is really neat about evidence-based practice is that it gives us different ways to quantify 'So what?' That's the real issue for clinicians. How is this going to make a difference? We must teach students to frame clinical questions, conduct efficient searches for evidence, and appraise that evidence for validity and clinical relevance."

Several years ago, Grace managed the School of Nursing's transformation of nursing education into an evidence-based practice paradigm, developing a



*Collins*

progressive curriculum from the undergraduate to doctoral level.

In 2006 she received a New York State Nursing Education Award, and Sigma Theta Tau the School's chapter of the nursing honor society named an award for evidence-based practice in her honor.

The Fulbright Specialists program provides short-term academic opportunities for U.S. faculty and professionals to collaborate with professional counterparts at non-U.S. post-secondary academic institutions.

#### **PROFESSOR RETURNS TO THE SCHOOL OF NURSING IN A NEW ROLE**

A familiar face transitioned to the role of specialty director of the Adult/Family Psychiatric Mental Health Nurse Practitioner (PMH-NP) program. **Mary K. Collins, NPP-BC**, started the job in January. She took over from **Daryl L. Sharp, PhD, RN, CS, NP**, who stepped down from the position to focus on her role as the director of the Doctor of Nursing Practice program.



*Plum*

In her new role, Collins is focusing on marketing of the program and recruitment of students. "I believe that we have the best program available for psychiatric nurse practitioners," she said. "We have this new curriculum and the finest faculty, and we have unique clinical and research opportunities in Rochester. I love this program and want to make as many people aware of it as I can."

Collins, who also maintains a psychotherapy/consulting business, was an adjunct professor at the School prior to this appointment.

#### **MONROE COUNTY MENTAL HEALTH DIRECTOR TO TEACH AT SCHOOL OF NURSING**

**Kathleen Plum, PhD, RN**, director of Monroe County's Office of Mental Health, will be rejoining the School of Nursing faculty this spring as an assistant professor of clinical nursing. She will be teaching a clinical seminar in the Adult/Family Psychiatric Mental Health Nurse Practitioner

*continued on page 14*

*Plum, continued from page 13*

(PMH-NP) program.

"I'm delighted to be teaching at the School again," said Plum. "I see the need for educational programs to prepare students for the changing demands of the workplace. Graduates must be prepared to adapt quickly to new philosophies and technologies, and to play an increasingly vital role in collaborative service delivery systems. What better way is there to assure synchrony between policy and practice than to work with students in my own discipline, at my alma mater?"

She earned her master's degree and doctorate from the University of Rochester School of Nursing and her bachelor's in psychology from the University of Rochester.

Plum, who started as an instructor at the School of Nursing in 1976, and has since held various positions both at the School of Nursing and the University of Rochester Medical Center.

## DECEASED ALUMNI

The School of Nursing expresses sympathy to the loved ones and classmates of our deceased alumni.

**Zoe C. (Batsleer) Bovet '35,** May 13, 2008, Marion, N.Y.

**Janice (Carnell) Brunner '60,** April 7, 2008, Folsom, W.Va.

**Valerie (Titus) Bryce '46,** June 10, 2008, Bradenton, Fla.

**Julia (Rodier) Burdick '43,** Sept. 30, 2002, Utica, N.Y.

**Valien (Judson) Cooke '47,** Oct. 5, 2007, Catonsville, Md.

**Beatrice A. (Rozitus) Cronk '47,** Jan. 17, 2008, Williamson, N.Y.

**Carolyn (Palmer) Distin '53,** Aug. 11, 2006, Sebring, Fla.

**Jean (Schell) Fodge '44,** March 25, 2000, Bergen, N.Y.

**Mildred (Grant) Gariss '33,** Jan. 12, 2001, Denville, N.J.

**Charlotte (Cole) Graham '44,** Nov. 21, 1996, San Ramon, Calif.

**I. Vernetta Grau '46,** Dec. 3, 1993, Snyder, N.Y.

**Dorothy Katheryn (Keith) Gress '44,** March 30, 2008, Brunswick, Maine

**Nellie Johnstone '46,** June 29, 2002, Granville, N.Y.

**Marjorie (Bentley) Kent '35,** May 29, 1997, Kissimmee, Fla.

**Dorothy (Johnson) Lickers '52,** April 4, 2008, Fairport, N.Y.

**Doris B. Mason '65,** April 2, 1999, Berwick, Pa.

**Frances (Seeger-Green) May '43,** Oct. 12, 2008, Palmyra, N.Y.

**Joyce M. Olson '62,** July 19, 1999, Lake Worth, Fla.

**Ann (Eisenberg) Rosenberg '37,** Jan. 1, 2002, Winter Park, Fla.

**Lois (Hutson) Schleif '34,** Aug. 29, 1999, Kailua, Hawaii

**Grace M. (Size) Shapiro '40,** March 7, 2008, Monroe Township, N.J.

**Joan (Sage) Shaw '46,** May 13, 2007, Lewisville, Texas

**Laurie (Brannigan) Skrmetti '60,** June 19, 2008, Hattiesburg, Miss.

**Patricia Mary (Faulds) Smith '52,** May 15, 2008, Worcester, N.Y.

**Virginia I. (Madden) Sullivan '41,** May 17, 2008, Brighton, Colo.

**Marion H. Weber '53, '63,** January 5, 2009, Rochester, N.Y.

**Ethalynd (Burke) Weeden '43,** May 10, 2008, Tully, N.Y.

**Janet (Elam) Weeden '44,** March 28, 2008, Canandaigua, N.Y.

**Helen (Delcos) Welch '47,** May 1, 1997, Nutley, N.J.

## UPDATE US!

Send news on your career, advancement, honors and family. Please include pertinent information as well as class year and degree and a way to reach you with questions. E-mail us at: [sonalumni@admin.rochester.edu](mailto:sonalumni@admin.rochester.edu)

Rochester Nursing Alumni and Advancement Center  
School of Nursing  
300 East River Road  
P.O. Box 278996  
Rochester, NY 14627-8996



# REUNION '08



Class of 1958



Class of 1953



Sally Norton and Laura Hogan were guest speakers at the kick-off program, "Hospital Based Palliative Care: No Longer an Oxymoron."

## Save the Date • School of Nursing Reunion • Oct. 8-11, 2009

Plan to join us in Rochester for a special School of Nursing Reunion, taking place concurrently this year with the University's Meliora Weekend. School of Nursing and other University alumni and parents will have the opportunity to take advantage of cross-disciplinary programming and guest speakers.

Key Reunion events taking place during the weekend include: 51st Annual Clare Dennis Lecture, class photos, 50th Reunion Medallion ceremony, and opportunities to meet and welcome School of Nursing dean Kathy Parker. Program specifics will be available in the coming months along with Meliora Weekend information.

<http://www.son.rochester.edu/son/alumni/reunion>



Dianne Moll presented the reunion class check to Dean Kathy Parker.



Lisa Norsen, '77, '83 M, '07 PhD, right, presented the Sigma Theta Tau Undergraduate Award to Amy Robinson.

# REUNION '08



*Madeline Schmitt '65, center, was named 2008 Distinguished Alumna.*



*Class of 1963*



*Dean Kathy Parker joined students at the Scholarship Reception.*



*Reunion Alumni*



*Lisa Norsen, '77, '83 M, '07 PhD, right, presented the Sigma Theta Tau Graduate Award to Beverly Richards.*



*Connie Leary '59, left, presented the Class of '59 Award to Elizabeth M. Neenan.*

# SCHOLARSHIP FUND

## NURSING ALUM GIFTS FAMILY HOME TO SUPPORT SCHOLARSHIPS AND BUILD FUTURES

By Anne Michelle Houle (Selin)  
with Jeannine and Glenn Houle

Many know Houle Station in East Bloomfield, N.Y. as the big blue house with the white fence at Toomey's Corners. For more than four decades it has been home for our family. Others think of the gorgeous old barns flanking the property or the stunning brick driveway and adornments leading to the house. More recently people may recall the flags that adorned the fence as a symbol of solidarity after the horrors of Sept. 11, 2001.

After graduating from the University of Rochester School of Nursing, my mother, Jeannine Todd Houle, RN '56, moved to Cleveland to work on the Pennsylvania Railroad. There she met my father, Glenn Houle, a lifelong railroad man and entrepreneur. After moving to New York early in their marriage, my parents eventually moved their growing family from West to East Bloomfield.

The property once included several cabins where travelers would stop for the night. In appreciation for their hospitality, art students who

were guests of my parents painted a sign that read "Houle Station." It was hung on a cabin in the east field and became the identifier of our home.

Little did we know or understand the legacy that my parents were building as we grew up. As adults with our own children in tow, we gathered at Houle Station to celebrate events like weddings and birthdays, and to join in grief, particularly when Jeremy, 14, the oldest grandchild died in an accident in 2004. We gathered because we could and because Houle Station was home. We look at it proudly as our foundation – the place where along with all the joy and sorrow that comes with any family, we were given the tools to go and build our own family legacies.

Education was always an important topic at Houle Station. There are six children in our family and any one of us who was interested in furthering our educations were encouraged to do so. My parents believed that getting an education was an important choice to make. It is with that in mind that they gift our family home to the



Glenn and Jeannine Houle, RN '56

University of Rochester School of Nursing. It is an act of gratitude for all the School has meant to our family. My parents hope that deserving students will benefit from the support the property gives to the Houle Station Scholarship Fund.

"We hope that all who live there will love it as we still do and that Houle Station will fill their hearts with joyful memories," said my mother, Jeannine Houle.

My parents' legacy is about building family and memories and providing opportunities for others to be equipped to do the same through a University of Rochester education. Their hope is that others develop

the same type of pride that Jeannine carries with her.

"Jeannine has always been proud of her association with the University of Rochester," said my father, Glenn Houle. "To keep the family name connected is important to her and to have the name carried on in such a grand manner is humbling."

My mother repeated the Strong motto to my siblings, and me over the years. Those words will continue to ring true through this endowment: "There is a right way, a wrong way, and a Strong way." RN

# JULY 1, 2007 - JUNE 30, 2008

## School of Nursing Donor Report - July 1, 2007 - June 30, 2008 REPORT ON GIVING

School of Nursing Donor Report  
July 1, 2007 – June 30, 2008

### GIFTS OF \$100 OR MORE ARE LISTED

The gifts are grouped and arranged in the following order:

- Alumni and Friends by Giving Level
- Alumni by Class Year
- Matching Gifts –  
Corporate, Foundation, Association and  
Organizational
- Nonmatching Gifts
- In Honor of
- In Memory of
- Eleanor Hall Bequest Society

### GIFT CLUB LEVELS

#### Dean's Diamond Circle

Benefactors	\$50,000 +
Founders	\$25,000 +
Advisors	\$10,000 +
Patrons	\$5,000 +
Fellows	\$2,500 +
Associates	\$1,000 +
Helen Wood Society	\$500 +
Grace L. Reid Society	\$250 +
Clare Dennison Society	\$100 +

This report lists gifts from July 1, 2007 – June 30, 2008. We apologize for any omissions or errors in the names of any participating contributors.

\* Denotes deceased.

### ALUMNI + FRIENDS BY GIVING LEVEL

#### DEAN'S DIAMOND CIRCLE MEMBERS

##### Benefactors

Edna Muntz,\* '99 HNR  
Jonathan G. Terry  
Myles G. Yerden Estate\*

##### Founders

Loretta C. Ford, '00 HNR &  
William J. Ford  
John F. Lawler  
Pamela McQuilkin Lewis  
& T. C. Lewis

##### Advisors

Roger B. Friedlander  
Robert H. Hurlbut  
Rosemary Snapp Kean, '68  
Mary Louise Nortz Leene

##### Patrons

Jeannine Todd Houle, '56  
Penelope S. Durand Martin,  
'98, '00 M  
Janet C. Eddy Scala, '55 &  
Robert A. Scala  
Sandra J. Sundeen, '61, '66  
Steven R. Young

##### Fellows

Carol A. Brink, '62, '56

Margaret Pinker Dempksi, '52  
& Robert E. Dempksi  
Ruth Anne Williams Parker, '57  
Merton Rubens  
Friederike Seligman &  
Joel Seligman  
Karen J. Webb Sutherland, '61  
& Robert M. Sutherland

##### Associates

Alicia Parker Anderson RN, '46  
Myrtle K. Aydelotte  
Ruth McKinney Balderston &  
William Balderston III  
Margaret Piper Bushey, '62, '92 M  
Joanne J. Vandevalk Clements,  
'77, '88 M, '92 PMC  
Richard J. Collins

Susan Halverson Cornelius, '76 M  
Janice Jacobs Currie, '53  
& Gordon D. Currie  
Jeffery A. Davis



Karen J. Webb Sutherland '61N and  
Robert M. Sutherland '66M (PhD),  
Dean's Diamond Circle, Fellows

Mary Ann Bochsler Demo RN, '57  
 Dorothy M. Hendrick Dickman, '54  
 J. Elizabeth French Egan, '48  
 Joanne M. Empey Fiaretti  
 RN, '56 & Donald Fiaretti  
 Dean H. Fisher\*  
 Marilyn Sandra Fiske, '67  
 & Harold H. Gardner  
 John T. Fitzgerald Jr.  
 Hugh L. Garvin  
 Jeanne Tuel Grace, '67, '83 M,  
 '89 PhD & Robert E. Grace  
 Irene Graham  
 Betty Pixley Grant, '44  
 & Richard Grant  
 Nancy Whitcraft Hare, '51  
 & J. Donald Hare  
 Elaine C. Hubbard  
 Mary Sue Jack, '80 FLW, '85 PhD  
 Linda J. Dellinger Jackson,  
 '63, '75 M  
 Ellen Bechhofer Kitchen, '84  
 Margaret F. Lander  
 & Raymond A. Lander Jr.  
 Patricia Dundon Larrabee, '77 M  
 Diane R. Lauver, '78 M, '87 PhD  
 Connie Lynn Thomas Leary, '59  
 Evelyn M. Lutz, '55  
 Joan Estelle Lynaugh, '68 M  
 Nancy McFadden  
 MacWhinney, '53  
 Lisa Helen Norsen, '77, '83 M,  
 '92 PMC, '07 PhD  
 Tobie Hittle Olsan, '95 M, '03 PhD  
 & John Olsan  
 Kathleen Mulholland  
 Parrinello, '75, '83 M  
 Kathleen Coyne Plum, '76 M,  
 '93 PhD & Robert T. Plum  
 Joanne Copeland Rodgers, '84,  
 '88 M & David M. Rodgers  
 Madeline Hubbard Schmitt, '65  
 Anne Heberling Schottmiller

Louise Sullivan Smith,\* '38  
 Rosemary E. Whitman Somich,  
 '79 M & Michael L. Somich  
 Elizabeth Gunn Sonnenschein, '62  
 & Hugo F. Sonnenschein  
 Linda May Freidank Taylor, '67  
 Carolyn Cartwright Tenney, '48  
 Julia M. Thornbury, '89 PhD  
 Thelma Joan Wells  
 Fay Wadsworth Whitney, '61  
 Patricia Weeks Williams, '58  
 Patricia Anne Davitt Witzel, '75  
 Phyllis Arn Zimmer, '72

Helen Wood Society

Barbara Niesser Adams, '57, '72 M  
 Elaine M. Hughes Andolina, '79 M  
 Robert J. Ashenburg  
 Joycelyn Chapman Austen, '56  
 & K. Frank Austen  
 Judith Gedney Baggs, '84 M,  
 '90 PhD  
 Eileen M. Cherba Berry RN, '65  
 Bonnie Jean Warga Biskup RN, '65  
 Peter H. Bouman II  
 Nila Safaya Bragg  
 Patricia M. Bull USN, '74  
 Mary Jane Casbeer, '53  
 Suzanne Festersen Clark RN, '63 M  
 & Hugh Clark  
 Theresa Bagnara Cooper,\* '56  
 Rosemary Cremon-Smith, '73  
 & Alfred J. Smith  
 John C. Daniels  
 James A. DeWeese  
 Nancy Whipple Erbland, '53  
 & John F. Erbland  
 Elizabeth G-Trinca Gallichio,  
 '04, '08 M  
 Evelyn Morrison Ghyzel RN, '56  
 Maureen Shinnock Gibbons, '58  
 Barry A. Gray\*

Gretchen Stotz Gray, '59  
 Phyllis Robinson Hasbrouck, '61  
 Mary E. Oliver Hauptmann, '77  
 Jean E. Johnson  
 Rebecca E. Kendall, '80  
 & Joseph C. Marron  
 Kathryn Phillips King, '72  
 Judith D. Enyedy Knight RN, '60  
 & Ronald B. Knight  
 Janice Campbell Loss  
 Ethel A. Nelson, '53  
 Catharine Bovier Petko, '62  
 & David W. Petko  
 Albert H. Pinsky  
 Marsha E. Still Pulhamus, '77, '83 M  
 Peter G. Robinson  
 Helen Tice Rogers, '53  
 Julie Keyser Sanford, '56  
 Carol J. Greenwald Scouler, '54  
 & William J. Scouler  
 Esther Turkington Simons, '57  
 Renuka Singh  
 Sherry West Smith, '83 M  
 & Richard L. Smith  
 Elizabeth Kellogg Walker, '62, '73 M  
 G. Robert Witmer Jr.  
 Sandra Gigliotti Witmer, '71, '75 M  
 Celine Womack, '79

Grace L. Reid Society

Barbara Frawley Astarita, '63  
 Eleanore Bertin-Colucci RN, '82  
 Susan Jones Boulay, '61  
 Pamela Anne Guba Brady, '03 PMC  
 Marian Jacobs Brook RN, '58  
 Joyce Pilkington Brown RN, '62  
 Catherine Bentley Browning, '48  
 & George G. Browning  
 Helen Tranter Carrese, '50  
 Margaret Campbell Cole, '49 DPL  
 Therese M. Collins, '98  
 Mary Lou Wranesh Cook, '72, '78 M

Doris Hubbard Crough, '41  
 Bette Crouse, '49  
 Janiece Ediger Desocio,  
 '00 PhD, '01 PMC  
 Velma Cavagnaro Durland, '50  
 Rose M. Fallico Finelli, '51  
 Amy Gilman Flannery, '77  
 Rhita Shafer Florey, '42  
 Janeen Lane Fowler, '53  
 Louise Genberg French RN, '52  
 Jean Garling, '72 M  
 Michael C. Goonan  
 Joan Graff, '85  
 Susan J. Griffey, '73  
 Norma Gibson Griffith, '52  
 Ann Kuebler Hager, '65  
 Kathleen P. Marciano Hall, '63  
 & James T. Hall  
 David A. Haller Jr.  
 Susan Elizabeth Harrington, '79  
 Gabriele Kuett Harrison, '74  
 Carol Bieck Henretta, '62 M  
 Veronica T. Birki Hychalk, '83 M  
 Janet Lou Irish-Feltner, '99  
 Donabeth Shoop Jensen, '50  
 Beatrice Wei Kam, '56  
 Jean Marie Walter Kimmel, '59  
 Jacqueline Ann Koscelnik, '83



Loretta C. Ford, '00 HNR & William J. Ford, Dean's Diamond Circle, Founders

# REPORT ON GIVING

School of Nursing Donor Report · July 1, 2007 – June 30, 2008

Nancy Kuncf &  
Ralph W. Kuncf PhD, MD  
Jane Merritt Land, '62  
Carol Ann Hammond Laniak, '58  
Jane Kendall Littlefield, '45  
Joan Marie Luce Maset, '76  
& Richard Maset  
Doris Brill McNulty, '46  
Dorothy I. Meddaugh,  
'83 M, '87 PhD  
Lynn M. Nagle, '95 PhD  
Sandra Louise Crust Neal, '69  
Faith Barnum Norton, '40  
Gretchen Towner Parry, '51  
Carol A. Carpenter Peters, '57  
Virginia Myers Polgrean, '57  
Nancy A. Hamlin Quiana, '57  
Jill R. Neuman Quinn, '79 M,  
'84 PMC, '03 PhD  
& James M. Quinn  
Carol Johnson Rawlings, '51  
Mary Mullen Reiffenstein, '57  
Carol S. Root  
Abigail Miranda Scheuer, '89  
Gracia E. Harding Sears, '57  
Beth M. Homan Smallwood, '59  
R. Glen Smiley  
Barbara Purcell Sosiak, '62  
Carolyn G. Tinling, '96 M  
Joan H. Vecellio Torpie, '55  
Tamara A. Mueller Urmey, '79  
Karen Johnson Wilson, '72

Marcia K. Milton Wilson, '58  
Delight Wolfe  
Geraldine Lobiondo Wood, '78 M  
Mary Lou Wranesh Cook, '72, '78 M

## Clare Dennison Society

Roberta Busky Abrams RN, '59  
Doris Garland Adamek, '57  
Dorothy D. Aeschliman RN, '49  
Eva Vecchi Aldrich, '53  
Gladys Robin Alexander, '36  
Alice Berggren Allen  
Pamela Ivy Ickes  
Allen-Peterson, '68  
Carol Stiles Anderson RN, '59  
Helen L. Fisher Aponte, '66  
Suzanne Schlicht Aquilina RN, '76 M  
& Alan T. Aquilina  
Carolyn Ruth Aradine, '63, '00 PMC  
Claudina Morris Ashelman  
Owen, '77  
Kristin Rene Hayes Asis, '92  
Frieda Bentz Vandenberg Bailey, '61  
& Charles D. Bailey  
Phyllis Roehm Bailey, '59  
Naomi B. Baker, '37  
Lisa Balbierer-Noble, '79  
Norah Mgonigle Barcay, '54  
John H. Barnes  
Barbara Wilt Beam, '51  
Phyllis Padgett Beard, '53  
Ruth Wilder Bell, '64  
Helen J. Powell Bellanca, '54  
& Russell Bellanca  
Cynthia A. Bixler, '04  
Lynne L. Hall Blanchard, '73  
Pauline Hughes Blossom, '57  
Nancy Barry Bond, '78  
Elizabeth Lilygren Bonvin, '51  
Ann E. Brady, '48  
Darce L. Metzler Braiman, '88 M  
Phyllis Frankson Bricker, '54  
Wilma A. Henry Brigham, '71  
Marion Dreby Brile, '66  
Judith E. Broad, '92 PhD

Muriel Deveau Broderick, '47  
Edna Louise Madden Brown  
Theresa Costanzo Bucci, '52  
Judith Wood Bunting RN, '66  
Margaret Anne Burkhardt, '75 M  
Carolyn Keith Burr, '78 M  
Elizabeth Hodge Butler, '64  
Jacqueline Brown Buttimer RN, '59  
Therese Ann Caffery, '83 M  
Marcia J. Swartz Cain, '79  
Carol Eva Frankhouser Cairns, '67  
Barbara Doud Cameron RN, '52  
Marilyn Kayner Canfield, '52  
Judith Madden Carr  
& Peyton T. Carr  
Adelaide W. Briggs Carter, '42  
Patricia Pease Casaw, '79 M  
Marjorie Thomes Chapin, '50  
Helene K. Shetler Charron,  
'64, '66 M  
Sarah Chase, '06  
Luanne Roberts Citrin RN, '78  
Louisa Bliven Coffin, '52  
Helen Range Cone, '47  
Jane W. Young Coolidge, '88 PhD  
Astrid E. Sandberg Cooper RN, '59  
Lisa Quay Corbett, '77  
Margaret E. Smith Corneau, '65  
Denise Yvonne Cote-Arsenault,  
'95 PhD  
P. O'dea Culhane Coughlin, '60  
Rose Marie Medwick Crupi, '59  
Jo Anna Cecilia Macoretta  
Daeschner, '04  
Maria E. Kleinheidt Daner, '69 M  
Ann McAvoy Daniluk RN, '52  
Marian Z. Donaldson Davis, '42  
Jeanne Margaret Frank Dewey, '87  
Ruth Weber Dickinson, '46  
Richard V. Dietrich  
Cynthia Longo DiMaggio RN, '82  
Virginia Huckin Dixon, '63  
Marquerite A. Driscoll  
Elizabeth Broker Duck, '58  
Sharon Lynn Dudley-Brown, '84  
Alison Munroe Dura, '90 M

Deborah H. Eldredge, '99 PhD  
Jean E. McCullough Engman, '50  
Virginia Berning Ervin, '41  
Anne M. Evans NP, '78 M  
Nancy Lyons Evarts, '54 DPL  
& C. McCollister Evarts  
F. Jane Eyre RN, '48  
Robert B. Fancher  
Dorothy Lawrence Favaloro, '55  
Doris Kathryn Fina, '66  
Phyllis Louise Kidder  
Fishbein RN, '79  
Nancy Lee Covell Fisher, '69  
Marion Becher Francis, '53  
Mary Ann Mandrick Frank, '71  
Eleanor A. Bauernschmidt  
Franks, '37  
Marlene Reed French, '61  
Maureen McCarthy Friedman, '74,  
'91 PhD & Barry A. Friedman  
Karen S. Genett, '01, '07 M  
Anne M. Gibbons, '84  
Patricia Gleason Gibbs RN, '57  
Cynthia Jean Palenski  
Gibson, '89 M  
Anne Barnetson Gilbride, '45  
Joyce L. Gillette, '73  
Jane Ladd Gilman, '42  
Maureen Giuffre, '83 PhD  
Mary Ann Perri Glasow, '74  
Linda Butz Goodenough, '75  
& Richard D. Goodenough  
Elaine Ruth Graf, '73  
Anna Christina Gramm, '77  
Sandi Colleen Grant, '01 M  
Shirley Kelly Griggs, '50  
Nancy H. Green Gugino, '61  
Sharon Elizabeth Gullo, '98 PMC  
Gloria Ann Hagopian, '64, '70 M  
Diane Kay Rudy Hahn, '73  
Lois B. Hainsworth, '85  
Judith Ann Hanlon, '83, '90 M  
Caryn Schloss Hanrahan, '86  
Joan Walsh Hartzog, '55  
Susan Ann Hauptfleisch, '88 M  
Mary Lou Williams Hayden, '78 M



Jonathan G. Terry, Dean's Diamond Circle, Benefactors

Marcia Collins Hayes, '56  
 Kent W. Haythorn, '98  
 Kelly Judith Herron Heindl, '85  
 Judith A. Christ Herrema, '61  
 Leona M. Frost Hess, '55  
 Eugenie Barbieri Hijeck, '76  
 & Thomas W. Hijeck, '78, '81 M  
 Janie Lynn Stumbo Hiserote, '76 M  
 Jennie A. VandenHeuvel  
 Hoechner, '51  
 Judith Hoffman-Knobloch, '73  
 Nancy Curry Hojnacki, '63  
 Carolyn Feyder Hokanson, '71  
 Marion Lopuszynski Holliday, '55  
 Louise Derushia Holmes, '59  
 Barbara Ann Oakes Horvath, '57  
 Lisa Catherine Houlder, '01 M  
 Sarah Shedd Howland, '76  
 Georgann Colwell Huff, '59  
 Anita Kaye Hyman, '83  
 Jennifer Williams Iott, '97  
 Nancy L. Jackson, '88  
 Barbara Stewart Jacobs, '77  
 Anne Pryor Jayne, '45  
 Patricia McGovern Jedrey, '59  
 & Robert L. Jedrey  
 Margaret E. Wilson Jensen, '51  
 & Stanley E. Jensen  
 Rosemary Johnson, '76 M  
 Roberta Owen Johnston, '52

Carrie Martine Carveth Jones,  
 '97, '03 M  
 Melanie Granieri Loss, '88  
 Katherine Langdon Jones, '81  
 Virginia Atwood Kamke, '59  
 Jean F. Schwartz Karr, '57  
 G. Levering Keely Jr., '73  
 Margaret Mary Smith Keiffer, '68  
 Mary McGinn Kelly, '59  
 Elizabeth Reichard Kelsey, '52  
 Carol Blanchard Kenyon,  
 '71, '76 M, '86 PhD  
 Laura P. Porter Kimble, '92 PhD  
 Alicia McArthur Kitzman, '67 M  
 Cheryl Davis Kline, '70, '93 M  
 Donna M. Knapp, '54  
 Claudia Kunz Knowlton, '65  
 Barbara Schwarz Koffsky, '59  
 Cynthia A. Maier Krutell, '59, '88 M  
 Fern Daum Kumar, '89  
 Angie Palmisano Laverdiere, '47  
 Mary Lee LaForest, '85, '90 M  
 Eletha C. Lectora, '85 M  
 Thelma Keech Leinbach, '52  
 Susan Baumler Lewish GNP, '99  
 Kathleen Gonzales Ling, '92, '97 M  
 Suanne Miller Lippman, '78 M  
 Eleanor M. Lofthouse, '39  
 Carole A. Lohr, '63  
 Rosemary C. Lombardo

& Peter G. Lombardo  
 Elizabeth Woodard Love, '47  
 Judith Briskie Lucas, '60  
 Debra J. Kleinberg Luger, '75  
 Joan Rupar MacLean, '57  
 Amy L. MacNaughton, '75  
 Debra S. Maddow  
 & Charles L. Maddow  
 Ellen J. Furney Magnussen, '72  
 Helen Elizabeth Hertzog Mang, '76  
 Sally Mann, '62  
 Nancy S. Manning, '59  
 Connie Durfee Marion, '65  
 & Roland Marion  
 Nancy A. Follett Martin, '63  
 Gloria Harrington Martinez, '51  
 Polly Himes Mazanec, '75  
 Mary E. Napodano McCann, '89  
 Marilyn Gray McClellan  
 Linda L. McHenry, '94 M  
 Audrey Brown McIntosh, '51  
 Carol Pflieger McKeegan, '49  
 & Frederick R. McKeegan  
 Ann Hix McMullen, '82 M  
 Genevieve Kaiser McQuillin, '64 M  
 Stella Hulsberg Megargle, '62  
 Sally Murphy Miller, '45  
 Althea Mix-Bryan, '76  
 John A. Modrzynski Jr., '88  
 Candace Klimesh Moser RN, '80  
 Jennifer A. Shea Mott, '79  
 Ruth Stevens Mulligan, '42  
 Rosemary Brinkman Nachtwey, '49  
 Lynn A. Bastian Nalbone, '61  
 Ann H. Pitzer Nason, '50  
 Susan Lee Schaertl Natalizio, '78  
 Sharon Carlson Nazarian, '62  
 Mary Williams Nelson, '52  
 Marcia McCarthy Neundorfer, '71  
 Kathleen M. Stoeckl Neuner, '69 M  
 Ellen Frehner Newton, '64  
 Carolyn T. Magee Nolan, '83 M  
 Elizabeth Marie Nolan, '78 M  
 Barbara Lotze Norman, '49  
 Lois J. Orton Odell, '56  
 Ruth Gerber O'Gawa, '55

Nancy J. Pedersen O'Neil, '89 M  
 Patricia Spencer Palmer, '48  
 Pauline Parce Parks  
 & Nathaniel G. Parks  
 Annette Marie Schultz Parsons,  
 '58 DPL, '64  
 Janet Scroger Peer, '68  
 Jean A. Upton Pelham, '53  
 Winifred Freisem Pheteplace, '42  
 Kathleen T. Phillips, '03  
 Maryann E. Powers Pierleoni, '59  
 Joseph Pilewski  
 Jane Piver, '72  
 Mabelle Bauch Pizzutiello, '63  
 Janet Schwert Plosser, '81  
 Michael F. Pope, '02 M  
 Carol Persse Powers, '50  
 Nancy Rhodes Rehner, '66 M  
 Joanne Marie Kardish Resnic, '86  
 Susan M. Reynolds, '74 M  
 Mary S. Riccelli, '02 M  
 Sallyann E. Reed Rice, '55  
 & Robert W. Rice  
 Maysie Calder Rich, '39  
 Maureen O'Rourke Richardson,  
 '67, '89 M  
 Kathy Henkel Rideout  
 Marie F. Johnson Robb, '55  
 Pauline Johnson Robertson, '60  
 Phyllis B. Ackerman Rosenbaum,  
 '61, '66 M  
 Joyce Measor Rude, '45  
 Maryann Dock Salisbury, '60  
 Sandra Madison Saturn, '62  
 Janice Spicer Scherer, '46  
 Carly Allyson Patterson  
 Schontz, '96  
 Janet Monica Allen Schroeck, '67  
 Carole Hartwig Schroeder, '63  
 Alison Williams Schultz,  
 '78 M, '94 PMC  
 Nancy C. Butler Schultz, '56  
 Helene Weste Scribner, '52  
 Maybelle Dilorenzo Sehm, '49  
 Harriet Schafer Seigel, '60, '76 M



Robert A. Scala and Janet C. Eddy Scala '55 at a scholarship reception

# REPORT ON GIVING

School of Nursing Donor Report · July 1, 2007 – June 30, 2008

Grace M. Size Shapiro,\* '40  
Joanne Amelia Shaughnessy, '75  
Lynn Shesser, '75  
Marjory Heisler Shriver, '59  
Jean L. Hampton Silsby, '48  
Jean Gunn Simmons, '44  
Joanne M. Skelly-Gearhart,  
'77, '84 M & Harry L. Gearhart  
Eileen Churchill Slocum, '52  
Adair Bowman Small, '68  
Susan Wright Smathers, '76  
Nancy Wickson Smith, '47  
Virginia Hannum Snyder, '56  
Corte J. Spencer, '65  
Patricia Ann St. Martin, '95 M  
Cathy Susan Miller Stein, '76  
& Howard M. Stein  
Marianne Doran Steinhacker, '71 M  
Ellen Tanneberger Stiles, '71  
Deborah S. Storm, '75  
& Garrett Field  
Janice A. Barfoot Stradling, '62  
Marylyn Ernest Straight, '52  
Marcia Carey Streb, '57  
Christine Thurber Streeter, '74  
Rita M. Sheridan Studley, '46  
Eileen Marie Sullivan-Marx, '80 M  
Jeanne P. Sumpter  
& Edwin A. Sumpter  
Esther Webster Sweet, '36  
Marjorie Pritchett Tabechian  
Patricia A. Tabloski, '89 PhD  
Carol M. Congdon Takaki, '54  
Barbara Nodine Taylor, '50  
Patricia Larsen Terry, '55  
Beverly Bronson Theuer, '73  
& Henry G. Theuer Jr.  
Mary Jean Thomas, '80 M  
Leigh Rockwood Townes, '75  
Gayle Ann Traver, '63  
Alison Miller Trinkoff, '78  
Jane I. Tuttle, '79, '84 M  
Jean Cornell Upton RN, '48  
Carol Anne Siebert Vaughn, '82  
Suzane White Villarini, '80

Flora E. Chindgren Vogt, '47  
& Howard W. Vogt  
Cheryl Justine Waller, '75  
Joan Insalaco Warren, '81  
Jane Curtiss Watkin, '45  
Bonnie Fish Welch, '64  
Phyllis Vollert Wettermann,  
'57, '62 M  
Ruth Fisher Whitcomb, '54  
Lynn Lang Willard, '62  
Joanne Siegenthaler  
Williamson, '57  
Diane Koegel Wintermeier, '60  
& Otto R. Wintermeier  
Hilda P. Wolf, '69  
Carolyn VanOrder Wyatt, '56  
Mary Lou Bush Youmans, '59  
Sharon Louise Monnat Yousey, '68  
Kate W. Zehr, '65  
Dayl Elizabeth Randall Zesk, '69

## GIVING BY CLASS YEAR

Degrees higher than the bachelor's are noted as:

M = Master's

PhD = Doctorate

PMC = Post Master's Certificate

HNR = Honorary Degree

### 1936

Gladys Robin Alexander  
Esther Webster Sweet

### 1937

Naomi B. Baker  
Eleanor A. Bauernschmidt Franks

### 1938

Louise Sullivan Smith\*

### 1939

Eleanor M. Lofthouse  
Maysie Calder Rich

### 1940

Faith Barnum Norton  
Grace M. Size Shapiro\*

### 1941

Doris Hubbard Crough  
Virginia Berning Ervin

### 1942

Adelaide W. Briggs Carter  
Marian Z. Donaldson Davis  
Rhita Shafer Florey  
Jane Ladd Gilman  
Ruth Stevens Mulligan  
Winifred Freisem Pheteplace

### 1944

Betty Pixley Grant & Richard Grant  
Jean Gunn Simmons

### 1945

Anne Barnetson Gilbride  
Anne Pryor Jayne  
Jane Kendall Littlefield  
Sally Murphy Miller  
Joyce Measor Rude  
Jane Curtiss Watkin

### 1946

Alicia Parker Anderson RN  
Ruth Weber Dickinson  
Doris Brill McNulty  
Janice Spicer Scherer  
Rita M. Sheridan Studley

### 1947

Muriel Deveau Broderick  
Helen Range Cone  
Angie Palmisano Laverdiere  
Elizabeth Woodard Love  
Nancy Wickson Smith  
Flora E. Chindgren Vogt  
& Howard W. Vogt

### 1948

Ann E. Brady  
Catherine Bentley Browning  
& George G. Browning  
J. Elizabeth French Engan  
F. Jane Eyre RN  
Patricia Spencer Palmer  
Jean L. Hampton Silsby  
Carolyn Cartwright Tenney  
Jean Cornell Upton RN

### 1949

Dorothy D. Aeschliman RN  
Margaret Campbell Cole  
Bette Crouse  
Carol Pfleeger McKeegan  
& Frederick R. McKeegan  
Rosemary Brinkman Nachtwey  
Barbara Lotze Norman  
Maybelle Dilorenzo Sehm

### 1950

Helen Tranter Carrese  
Marjorie Thomes Chapin  
Velma Cavagnaro Durland  
Jean E. McCullough Engman  
Shirley Kelly Griggs  
Donabeth Shoop Jensen  
Ann H. Pitzer Nason  
Carol Persse Powers  
Barbara Nodine Taylor



**1951**

Barbara Wilt Beam  
 Elizabeth Lilygren Bonvin  
 Rose M. Fallico Finelli  
 Nancy Whitcraft Hare  
 & J. Donald Hare  
 Jennie A. VandenHeuvel Hoechner  
 Margaret E. Wilson Jensen  
 & Stanley E. Jensen  
 Gloria Harrington Martinez  
 Audrey Brown McIntosh  
 Gretchen Towner Parry  
 Carol Johnson Rawlings

**1952**

Theresa Costanzo Bucci  
 Barbara Doud Cameron RN  
 Marilyn Kayner Canfield  
 Louisa Bliven Coffin  
 Ann McAvoy Daniluk RN  
 Margaret Pinker DempSKI  
 & Robert E. DempSKI  
 Louise Genberg French RN  
 Norma Gibson Griffith  
 Roberta Owen Johnston  
 Elizabeth Reichard Kelsey  
 Thelma Keech Leinbach  
 Mary Williams Nelson  
 Helene Weste Scribner  
 Eileen Churchill Slocum  
 Marylyn Ernest Straight

**1953**

Eva Vecchi Aldrich  
 Phyllis Padgett Beard  
 Mary Jane Casbeer  
 Janice Jacobs Currie  
 & Gordon D. Currie  
 Nancy Whipple Erbland  
 & John F. Erbland  
 Janeen Lane Fowler  
 Marion Becher Francis

Nancy McFadden MacWhinney  
 Ethel A. Nelson  
 Jean A. Upton Pelham  
 Helen Tice Rogers

**1954**

Norah Mgonigle Barcay  
 Helen J. Powell Bellanca  
 & Russell Bellanca  
 Phyllis Frankson Bricker  
 Dorothy M. Hendrick Dickman  
 Nancy Lyons Evarts, '54  
 & C. McCollister Evarts  
 Donna M. Knapp  
 Carol J. Greenwald Scouler  
 & William J. Scouler  
 Carol M. Congdon Takaki  
 Ruth Fisher Whitcomb

**1955**

Dorothy Lawrence Favaloro  
 Joan Walsh Hartzog  
 Leona M. Frost Hess  
 Marion Lopuszynski Holliday  
 Evelyn M. Lutz  
 Ruth Gerber O'Gawa  
 Sallyann E. Reed Rice  
 & Robert W. Rice  
 Marie F. Johnson Robb  
 Janet C. Eddy Scala  
 & Robert A. Scala  
 Patricia Larsen Terry  
 Joan H. Vecellio Torpie

**1956**

Joycelyn Chapman Austen  
 & K. Frank Austen  
 Carol A. Brink  
 Theresa Bagnara Cooper\*  
 Joanne M. Empey Fiaretti RN  
 & Donald Fiaretti  
 Evelyn Morrison Ghyzel RN  
 Marcia Collins Hayes  
 Jeannine Todd Houle

Beatrice Wei Kam  
 Lois J. Orton Odell  
 Julie Keyser Sanford  
 Nancy C. Butler Schultz  
 Virginia Hannum Snyder  
 Carolyn VanOrder Wyatt

**1957**

Doris Garland Adamek  
 Barbara Niesser Adams, '72 M  
 Pauline Hughes Blossom  
 Mary Ann Bochsler Demo RN  
 Patricia Gleason Gibbs RN  
 Barbara Ann Oakes Horvath  
 Jean F. Schwartz Karr  
 Joan Rugar MacLean  
 Ruth Anne Williams Parker  
 Carol A. Carpenter Peters  
 Virginia Myers Polgrean  
 Nancy A. Hamlin Quiana  
 Mary Mullen Reiffenstein  
 Gracia E. Harding Sears  
 Esther Turkington Simons  
 Marcia Carey Streb  
 Phyllis Vollert Wettermann, '62 M  
 Joanne Siegenthaler Williamson

**1958**

Marian Jacobs Brook RN  
 Elizabeth Broker Duck  
 Maureen Shinnock Gibbons  
 Carol Ann Hammond Laniak  
 Annette Marie Schultz Parsons  
 Patricia Weeks Williams  
 Marcia K. Milton Wilson

**1959**

Roberta Busky Abrams RN  
 Carol Stiles Anderson RN  
 Phyllis Roehm Bailey  
 Jacqueline Brown Buttimer RN  
 Astrid E. Sandberg Cooper RN  
 Rose Marie Medwick Crupi  
 Louise Derushia Holmes  
 Georgann Colwell Huff  
 Gretchen Stotz Gray  
 Patricia McGovern Jedrey  
 & Robert L. Jedrey  
 Virginia Atwood Kamke  
 Mary McGinn Kelly  
 Jean Marie Walter Kimmel  
 Barbara Schwarz Koffsky  
 Cynthia A. Maier Krutell, '88 M  
 Connie Lynn Thomas Leary



*Marcia Milton Wilson '58 and husband, Robert Wilson, who established the Marcia Milton Wilson Endowed Scholarship Fund in honor of Marcia's 50th Nursing Reunion*

# REPORT ON GIVING

School of Nursing Donor Report · July 1, 2007 – June 30, 2008

Nancy S. Manning  
Maryann E. Powers Pierleoni  
Marjory Heisler Shriver  
Beth M. Homan Smallwood  
Mary Lou Bush Youmans

## 1960

P. O'dea Culhane Coughlin  
Judith D. Enyedy Knight RN  
& Ronald B. Knight  
Judith Briskie Lucas  
Pauline Johnson Robertson  
Maryann Dock Salisbury  
Harriet Schafer Seigel, '76 M  
Diane Koegel Wintermeier  
& Otto R. Wintermeier

## 1961

Frieda Bentzvandenbergh Bailey  
& Charles D. Bailey  
Susan Jones Boulay  
Marlene Reed French  
Nancy H. Green Gugino  
Phyllis Robinson Hasbrouck  
Judith A. Christ Herrema  
Lynn A. Bastian Nalbhone  
Phyllis B. Ackerman  
Rosenbaum, '66 M  
Sandra J. Sundeen  
Karen J. Webb Sutherland  
& Robert M. Sutherland  
Fay Wadsworth Whitney

## 1962

Margaret Piper Bushey, '92 M  
Joyce Pilkington Brown RN  
Carol Bieck Henretta, '62 M  
Jane Merritt Land  
Sally Mann  
Stella Hulsberg Megargle  
Sharon Carlson Nazarian  
Catharine Bovier Petko  
& David W. Petko  
Sandra Madison Saturn

Barbara P. Purcell Sosiak  
Janice A. Barfoot Stradling  
Elizabeth Gunn Sonnenschein  
& Hugo F. Sonnenschein  
Elizabeth Kellogg Walker, '73 M  
Lynn Lang Willard

## 1963

Carolyn Ruth Aradine, '00 PMC  
Barbara Frawley Astarita  
Suzanne Festersen Clark RN, '63 M  
& Hugh Clark  
Virginia Huckin Dixon  
Kathleen P. Marciano Hall  
& James T. Hall  
Nancy Curry Hojnacki  
Linda J. Dellinger Jackson, '75 M  
Carole A. Lohr  
Nancy A. Follett Martin  
Mabelle Bauch Pizzutiello  
Carole Hartwig Schroeder  
Gayle Ann Traver

## 1964

Ruth Wilder Bell  
Elizabeth Hodge Butler  
Helene K. Shetler  
Charron, MSRN, '66 M  
Gloria Ann Hagopian, '70 M  
Genevieve Kaiser McQuillin, '64 M  
Ellen Frehner Newton  
Bonnie Fish Welch

## 1965

Eileen M. Cherba Berry RN  
Bonnie Jean Warga Biskup RN  
Margaret E. Smith Corneau  
Ann Kuebler Hager  
Claudia Kunz Knowlton  
Connie Durfee Marion  
& Roland Marion  
Madeline Hubbard Schmitt  
Corte J. Spencer  
Kate W. Zehr

## 1966

Helen L. Fisher Aponte  
Marion Dreby Brile  
Judith Wood Bunting RN  
Doris Kathryn Fina  
Nancy Rhodes Rehner, '66 M

## 1967

Carol Eva Frankhouser Cairns  
Marilyn Sandra Fiske  
& Harold H. Gardner  
Jeanne Tuel Grace, '83 M, '89 PhD  
& Robert E. Grace  
Alicia McArthur Kitzman, '67 M  
Maureen O'Rourke Richardson,  
'89 M  
Janet Monica Allen Schroeck  
Linda May Freidank Taylor

## 1968

Pamela Ivy Ickes Allen Peterson  
Rosemary Snapp Kean  
Margaret Mary Smith Keiffer  
Joan Estelle Lynaugh, '68 M  
Janet Scroger Peer  
Adair Bowman Small  
Sharon Louise Monnat Yousey

## 1969

Maria E. Kleinheidt Daner, '69 M  
Nancy Lee Covell Fisher  
Sandra Louise Crust Neal  
Kathleen M. Stoeckl Neuner, '69 M  
Hilda P. Wolf  
Dayl Elizabeth Randall Zesk

## 1970

Cheryl Davis Kline, '93 M

## 1971

Wilma A. Henry Brigham  
Mary Ann Mandrick Frank  
Carolyn Feyder Hokanson  
Carol Blanchard Kenyon,  
'76 M, '86 PhD  
Marcia McCarthy Neundorfer  
Marianne Doran Steinhacker, '71 M  
Ellen Tanneberger Stiles  
Sandra Gigliotti Witmer, '75 M

## 1972

Mary Lou Wranesh Cook, '78 M  
Jean Garling, '72 M  
Kathryn Phillips King  
Ellen J. Furney Magnussen  
Jane Piver  
Karen Johnson Wilson  
Phyllis Arn Zimmer

## 1973

Lynne L. Hall Blanchard  
Rosemary Cremo-Smith  
& Alfred J. Smith  
Joyce L. Gillette  
Elaine Ruth Graf  
Susan J. Griffey  
Diane Kay Rudy Hahn  
Judith Hoffman-Knobloch  
G. Levering Keely Jr.  
Beverly Bronson Theuer  
& Henry G. Theuer Jr.

Degrees higher than the bachelor's  
are noted as:

M = Master's

PhD = Doctorate

PMC = Post Master's Certificate

HNR = Honorary Degree

**1974**

Patricia M. Bull USN  
Maureen McCarthy Friedman,  
'91 PhD & Barry A. Friedman  
Mary Ann Perri Glasow  
Gabriele Kuett Harrison  
Susan M. Reynolds, '74 M  
Christine Thurber Streeter

**1975**

Margaret Anne Burkhardt, '75 M  
Linda Butz Goodenough  
& Richard D. Goodenough  
Debra J. Kleinberg Luger  
Amy L. MacNaughton  
Polly Himes Mazanec  
Kathleen Mulholland Parrinello,  
'83 M  
Joanne Amelia Shaughnessy  
Lynn Shesser  
Deborah Storm & Garrett Field  
Leigh Rockwood Townes  
Cheryl Justine Waller  
Patricia Anne Davitt Witzel

**1976**

Suzanne Schlicht Aquilina  
RN, '76 M & Alan T. Aquilina  
Susan Halverson Cornelius, '76 M  
Eugenie Barbieri Hijeck  
& Thomas W. Hijeck, '78, '81 M

Janie Lynn Stumbo Hiserote, '76 M  
Sarah Shedd Howland  
Rosemary Johnson, '76 M  
Helen Elizabeth Hertzog Mang  
Joan Marie Luce Maset  
& Richard Maset  
Althea Mix-Bryan  
Kathleen Coyne Plum,  
'76 M, '93 PhD  
& Robert T. Plum  
Susan Wright Smathers  
Cathy Susan Miller Stein  
& Howard M. Stein

**1977**

Joanne J. Vandevalk Clements,  
'88 M, '92 PMC  
Lisa Quay Corbett  
Amy Gilman Flannery  
Anna Christina Gramm  
Mary E. Oliver Hauptmann  
Barbara Stewart Jacobs  
Patricia Dundon Larrabee, '77 M  
Lisa Helen Norsen,  
'83 M, '92 PMC, '07 PhD  
Claudina Morris Ashelman Owen  
Marsha E. Still Pulhamus, '83 M  
Joanne M. Skelly-Gearhart, '84 M  
& Harry L. Gearhart

**1978**

Nancy Barry Bond  
Carolyn Keith Burr, '78 M  
Luanne Roberts Citrin RN  
Anne M. Evans NP, '78 M  
Mary Lou Williams Hayden, '78 M  
Diane R. Lauver, '78 M, '87 PhD  
Suanne Miller Lippman, '78 M  
Susan Lee Schaertl Natalizio  
Elizabeth Marie Nolan, '78 M  
Alison Williams Schultz,  
'78 M, '94 PMC  
Alison Miller Trinkoff  
Geraldine Lobiondo Wood, '78 M

**1979**

Elaine M. Hughes Andolina, '79 M  
Lisa Balbierer Balbierer-Noble  
Marcia J. Swartz Cain  
Patricia Pease Casaw, '79 M  
Phyllis Louise Kidder Fishbein RN  
Susan Elizabeth Harrington  
Jennifer A. Shea Mott  
Jill R. Neuman Quinn,  
'79 M, '84 PMC, '03 PhD  
& James M. Quinn  
Rosemary E. Whitman Somich,  
'79 M & Michael L. Somich  
Jane I. Tuttle, '84 M  
Tamara A. Mueller Urmey  
Celine Womack

**1980**

Mary Sue Jack, '80 FLW, '85 PhD  
Rebecca E. Kendall  
& Joseph C. Marron  
Candace Klimesh Moser RN  
Eileen Marie Sullivan-Marx, '80 M  
Mary Jean Thomas, '80 M  
Suzane White Villarini

**1981**

Katherine Langdon Jones  
Janet Schwert Plosser  
Joan Insalaco Warren

**1982**

Eleanore Bertin-Colucci RN  
Cynthia Longo DiMaggio RN  
Ann Hix McMullen, '82 M  
Carol Anne Siebert Vaughn

**1983**

Therese Ann Caffery, '83 M  
Maureen Giuffre, '83 PhD  
Judith Ann Hanlon, '90 M  
Veronica T. Birki Hychalk, '83 M  
Anita Kaye Hyman  
Jacqueline Ann Koscelnik  
Dorothy I. Meddaugh,  
'83 M, '87 PhD  
Carolyn T. Magee Nolan, '83 M  
Sherry West Smith, '83 M  
& Richard L. Smith

**1984**

Judith Gedney Baggs,  
'84 M, '90 PhD  
Sharon Lynn Dudley-Brown  
Anne M. Gibbons  
Ellen Bechhofer Kitchen  
Joanne Copeland Rodgers, '88 M  
& David M. Rodgers

**1985**

Joan Graff  
Lois B. Hainsworth  
Kelly Judith Herron Heindl  
Mary Lee LaForest, '90 M  
Eletha C. Lectora, '85 M

**1986**

Caryn Schloss Hanrahan  
Joanne Marie Kardish Resnic



Bob Hurlbut, Dean Kathy Parker and Dr. Bernard Brody at the Dean's Diamond Circle dinner

# REPORT ON GIVING

School of Nursing Donor Report · July 1, 2007 – June 30, 2008

## 1987

Jeanne Margaret Frank Dewey

## 1988

Darce L. Metzler Braiman, '88 M  
Jane W. Young Coolidge, '88 PhD  
Melanie Granieri Granieri Loss  
Susan Ann Hauptfleisch, '88 M  
Nancy L. Jackson  
John A. Modrzyński Jr.

## 1989

Cynthia Jean Palenski Gibson, '89 M  
Fern Daum Kumar  
Mary E. Napodano McCann  
Nancy J. Pedersen O'Neil, '89 M  
Abigail Miranda Scheuer  
Patricia A. Tabloski, '89 PhD  
Julia M. Thornbury, '89 PhD

## 1990

Alison Munroe Dura, '90 M

## 1992

Kristin Rene Hayes Asis  
Judith E. Broad, '92 PhD  
Laura Porter Kimble, '92 PhD  
Kathleen Gonzales Ling, '97 M

## 1994

Linda L. McHenry, '94 M

## 1995

Denise Yvonne Cote-Arsenault, '95 PhD  
Lynn M. Nagle, '95 PhD  
Tobie Hittle Olsan, '95 M, '03 PhD  
& John Olsan  
Patricia Ann St. Martin, '95 M

## 1996

Carly Allyson Patterson Schontz  
Carolyn G. Tinling, '96 M

## 1997

Jennifer Williams Iott  
Carrie Martine Carveth Jones, '03 M

## 1998

Therese M. Collins  
Sharon Elizabeth Gullo, '98 PMC  
Kent W. Haythorn  
Penelope S. Durand Martin, '00 M

## 1999

Deborah H. Eldredge, '99 PhD  
Janet Lou Irish-Feltner  
Susan Baumler Lewish GNP  
Edna Muntz,\* '99 HNR

## 2000

Janiece Ediger Desocio, '00 PhD, '01 PMC  
Loretta C. Ford, '00 HNR  
& William J. Ford

## 2001

Karen S. Genett, '07 M  
Sandi Colleen Grant, '01 M  
Lisa Catherine Houlder, '01 M



Penelope S. Durand Martin, '98, '00 M,  
Dean's Diamond Circle, Patrons

## 2002

Michael F. Pope, '02 M  
Mary S. Riccelli, '02 M

## 2003

Pamela Anne Guba Brady, '03 PMC  
Kathleen T. Phillips

## 2004

Cynthia A. Bixler  
Jo Anna Cecilia Macoretta  
Daeschner  
Elizabeth G-Trinca Gallichio, '08 M

## 2006

Sarah Chase

## CORPORATE, FOUNDATION, ASSOCIATION AND ORGANIZATIONAL GIFTS

## MATCHING GIFTS

Abbott Laboratories  
ACE INA Foundation  
Baxter International Foundation  
Boeing Company  
Bristol-Myers Squibb Company  
Constellation Energy Group  
Deloitte & Touche  
ExxonMobil Foundation  
Harris Foundation  
Humana Inc.  
IBM Corporation  
Lockheed Martin Corporation  
Merck & Co., Inc.  
Moog, Inc.  
National Grid  
SDG & E  
Verizon  
Xerox Foundation/Xerox Company

## NON-MATCHING GIFTS

Anonymous  
Alvin F. & Ruth K. Thiem  
Foundation  
American Heart Association  
Ayco Charitable Foundation  
Communities Foundation of  
Oklahoma  
Elmer W. Davis, Inc.  
Foundation for the  
Jewish Community  
Helene Fuld Health Trust  
Hurlbut Foundation  
M.H. Yager Foundation, Inc.  
Medical Imaging Center  
Nokia  
Robert Wood Johnson Foundation  
Rochester Area Community  
Foundation  
Spindler Family Foundation  
Terry Family Talent Foundation  
Vanguard Charitable Endowment  
Westminster Barrington  
Foundation

## MEMORIAL GIFTS

## IN HONOR OF

DEAN PATRICIA CHIVERTON  
John Olsan & Tobie Olsan  
Robert Sutherland  
& Karen Sutherland

CLASS OF 1952  
Pauline Blossom  
Margaret Farr  
Eileen Slocum

CLASS OF 1953  
Nancy MacWhinney  
Joseph Sorbello  
& Eleanor Sorbello

CLASS OF 1957  
Barbara Adams  
Pauline Blossom

PETER COLLINGE  
Sandra Neal

ANTHONY & LILLIAN CREMO  
Alfred Smith & Rosemary  
Cremo-Smith

SALVATORE & MARY GALLICCHIO  
Elizabeth Gallichio

ELAINE HUBBARD  
Rochester Area Community  
Foundation  
Delight Wolfe

NANCY KENT  
Pamela Young

MADELINE SCHMITT  
Margaret Burkhardt

SONYA P. SCHUS  
Albert Pinsky

CAROL THIEL  
Sandra Neal

**IN MEMORIAM**

ELSIE ASHENBURG  
Robert Ashenburg  
John Barnes  
Betty Baybutt  
Marquerite Driscoll  
Marie Dunn  
John Lynd  
Medical Imaging Center  
Delores Schott  
Joan Smith  
Ruth Tallmadge  
Eleanor Woodbury  
Cecilia Wright

JUDITH BAUMGARTNER  
Edwin Baumgartner

LOIS CHALECKE  
Kathleen Hofgren  
Ruth Trainor  
Helen Wright

GERALD P. COOPER  
Theresa Cooper

RUSSELL EDWARD CRAYTOR  
Warren Glaser & June Glaser  
Nathaniel Parks & Pauline Parks  
David Stewart

CHARLINE DANIELS  
John Daniels

LOIS DAVIS & MARGARET  
MCCRORY  
Theresa Bucci

FRANCES SMITH DIETRICH  
Richard Dietrich  
Marjorie Jeroy

WILLIAM L. ENGAN  
J. Elizabeth Engan

JEAN STEWART FRIAR  
Peter Lombardo  
& Rosemary Lombardo  
Frederick McKeenan  
& Carol McKeenan  
John McMahon  
Susan Shafer  
Judith Wallman  
Gladys Wiedrich

CAROL LANG HELLING  
Lynn Willard

ELAINE TURCOTTE HILL  
Rosemary Nachtwey

FLORENCE JACOBY  
Sherrie Bernat  
Monica Cloonan  
Saul Edenbaum  
Carol Bieck Henretta  
Ronald Hilton & Sharon Hilton  
Lois London  
J. Robert Maney  
Susan Reynolds  
Jane Tuttle

EDITH P. KLEIN  
Albert Pinsky

JANET KRENZER  
Elmer W. Davis, Inc.

SYLVIA MORAN LAWLER  
John Lawler

DR. ROBERT LOSS JR.  
Janice Loss

MAX PINSKY  
Albert Pinsky

DEE GREENHALGH PYKE  
Dorothy Dickman

NELSON G. RICH  
Nancy VanHooydonk

EDWARD L. ROMIG USN  
Tozia Engleman

VIRGINIA MADDEN SULLIVAN  
Edna Brown  
Peyton Carr & Judith Carr

GEORGE SPENCER TERRY JR.  
Jonathan Terry

CAROLYN E. WHITNEY  
Carolyn Tenney

ANNA BATER YOUNG  
Amy G. Flannery  
Jane L. Gilman  
Steven R. Young



*Elsie Ashenburg '41, '42 N*



*Florence Jacoby and her husband Marvin*



*Anna Bater Young '41N, '52*

# ELEANOR HALL BEQUEST SOCIETY

The following are members of the Eleanor Hall Bequest Society. Members are individuals who have included the School of Nursing in their wills or have established funds through one of the University's planned giving options, such as a charitable gift annuity. In doing so, this group is thoughtfully planning to guarantee the future success of our School. Their contributions will make an impact on the education of countless nursing students for years to come.

If you would like more information about joining the Eleanor Hall Bequest Society, please contact Marianne Virgilio in the Office of Trusts and Estates, University of Rochester, (585) 273-1167, or via e-mail at [mvirgilio@alumni.rochester.edu](mailto:mvirgilio@alumni.rochester.edu).

Anonymous (5)  
Carol A. Brink  
Marian J. Brook  
Rupert Brook  
Bernice Brugler\*  
Mercer Brugler\*  
Esther Bumpus\*  
James Monroe Cole  
Marion S. Cole\*  
Josephine Craytor\*  
Russell E. Craytor\*  
Betty Deffenbaugh\*  
Homer Deffenbaugh\*

J. Elizabeth Engan  
C. McCollister Evarts  
Nancy L. Evarts  
Donald Fiaretti  
Joanne M. Fiaretti  
Loretta C. Ford  
William J. Ford  
Jane L. Gilman  
Mary E. Granger\*  
Eleanor Hall  
David A. Haller Jr.  
Cynthia Allen Hart\*  
Helen H. Heller\*

Elaine C. Hubbard  
Jean E. Johnson  
Rosemary Snapp Kean  
Laura Kellogg\*  
Mary Louise Nortz Leene  
Muriel E. Mason Ellis\*  
Donald E. McConville\*  
Monica McConville\*  
Margaret A. McCrory\*  
Faith B. Norton  
Kathleen C. Plum  
Ernest Ira Reveal\*  
Hazel Holt Reveal\*

Andrea Bourquin Ryan  
Janet C. Scala  
Robert A. Scala  
Madeline Schmitt  
Elaine S. Sewell  
Louise S. Smith\*  
Barbara H. Spindler\*  
Howard A. Spindler\*  
Mr. George Spencer Terry Jr.\*  
Mrs. Jane Curtiss Watkin  
Miss Carolyn E. Whitney\*  
Dr. Fay Wadsworth Whitney  
Ms. J. Christine Wilson

## CHARITABLE GIFT ANNUITY

*The Personal Side of Giving*

### Benefits of a charitable gift annuity include:

- One or two beneficiaries receive guaranteed income for life at a rate based on age at the time you establish the annuity.
- A portion of each income payment is usually tax free.
- You receive a charitable deduction that can reduce your current taxes.
- There are potential gift- and estate-tax savings.
- Most important, you make a valuable charitable gift to the School of Nursing.



My whole work life had such a firm foundation from my time at the University of Rochester School of Nursing. Even though my stay at Rochester was short – just junior and senior years – it was excellent preparation for my career in nursing.

The entire experience at the School of Nursing was wonderful: my classmates, the faculty, the sense of closeness among those in nursing and the collegiality between nursing and medicine. I had the opportunity to sit down and talk with Miss Eleanor Hall, who was director of the nursing program at the time. And faculty from the School of Medicine taught some of our classes. It was an inspiring example of how various members of the health care team can work together. Overall, it was a wonderful learning community.

As a psychiatric nurse specialist, I work with a team

that serves individuals age 60 and older. We provide home visits and care in the clinic, and we follow patients in the hospital. My Rochester education continues to hold me in good stead.

Why did I establish a deferred charitable gift annuity? Besides the fact that it made good sense from tax and financial perspectives, it was also important because the University helped my parents pay for my education. I feel a strong desire to help somebody else. The gift annuity was one way in which I could do that.

– *Rosemary Snapp Kean '68*

A BEQUEST TO THE SCHOOL OF NURSING IN YOUR ESTATE PLAN  
...ALLOWS YOU TO SPECIFY YOUR WISHES FOR DISTRIBUTION OF ASSETS  
...MAY ALLOW YOU TO GIVE AT A LEVEL NOT FEASIBLE DURING YOUR LIFETIME  
...MAY REDUCE THE TAX BURDEN OF YOUR ESTATE

# WAYS TO GIVE

## Online

To make a secure transaction with your Visa, MasterCard or Discover, visit [www.rochester.edu/annualfunds](http://www.rochester.edu/annualfunds) and select the School of Nursing.

## Check

Please make your check payable to "University of Rochester School of Nursing" and mail to:  
University of Rochester  
Gift Office  
P.O. Box 270032  
Rochester, NY 14627-0032

## Securities and Stocks

If you are interested in making a gift of securities or would like more information, please contact (or have your broker contact) Debra Rossi in Gift and Donor Records at (585) 275-3903.

## Become a member of the Dean's Diamond Circle

Diamond Circle members play an integral role in sustaining the School of Nursing today and in paving the way for its future. With the generous support of dedicated alumni and

friends, the School is successfully preparing the next generation of health care providers, educators, researchers and leaders. Membership starts at \$1,000 annually. Please consider joining today.

## George Eastman Circle

Become a George Eastman Circle member today by making an annual fund gift of \$1,500 or more and help make a significant impact on current and future students.

## Planned Gifts

### **Eleanor Hall Bequest Society**

Making provisions for the School of Nursing in your estate plans today will ensure the future of our School. Eleanor Hall membership will also qualify you for Dean's Diamond Circle membership.

### **Charitable Gift Annuities**

Charitable Gift Annuities may be a viable alternative for you if you are looking for a steady stream of income, have CDs coming due or have low-interest savings. Call us today for an illustration.

## **IRA Charitable Rollover**

Until the end of 2009, you have the opportunity to use your IRA funds to make charitable gifts without the amount of the gift counting as a taxable distribution.

To qualify:

- You must be 70½ or older
- You must transfer your funds directly from your IRA accounts to the charity
- Qualifying gifts are limited to \$100,000 per year per individual
- You must make an outright gift (life-income gifts such as charitable gift annuities or remainder trusts do not qualify)
- Gifts do not generate a federal income tax deduction

## Contact Us

For more information about making your gift to support the School of Nursing, please contact Dianne Moll, associate director of Advancement at the University of Rochester School of Nursing at (800) 333-4428 / (585) 273-5075, or via e-mail at [dmoll@admin.rochester.edu](mailto:dmoll@admin.rochester.edu).

THANK YOU FOR YOUR SUPPORT OF THE SCHOOL OF NURSING!



# SCHOOL OF NURSING

UNIVERSITY of ROCHESTER  
MEDICAL CENTER

601 Elmwood Avenue, Box 643  
Rochester, New York 14642

*Change Service Requested*

Non-Profit  
US Postage  
PAID  
Permit No. 780  
Rochester, NY

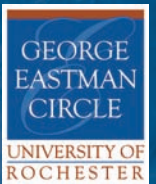


**Nursing Transformed.**  
Made possible by you.

**Your gift**, in any amount, to the School of Nursing Annual Fund directly supports the exceptional Rochester experience, from scholarships and innovative research opportunities to building nursing skills that will last a lifetime.

Give today and help make  
great things happen.

Become a George Eastman Circle member today by making an annual fund gift of \$1,500 or more and help make a significant impact on current and future students.



SCHOOL OF NURSING  
UNIVERSITY of ROCHESTER  
MEDICAL CENTER

## ANNUAL GIVING PROGRAMS

UNIVERSITY OF ROCHESTER

(585) 276-3057 • (800) 598-1330

[www.rochester.edu/annualfunds](http://www.rochester.edu/annualfunds) • [annualfunds@rochester.edu](mailto:annualfunds@rochester.edu)